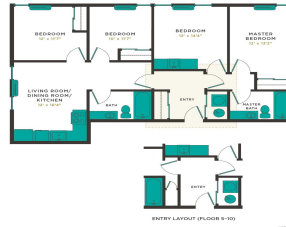
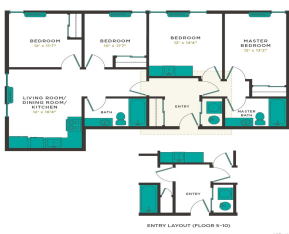


Hale Ka Lae 7000 Hawaii Kai Drive Unit 3601, Honolulu 96825 * Hale Ka Lae * \$741,000

Sold Price: \$741,000	Sold Date: 10-23-2020	Sold Ratio: 100%
Beds: 4	MLS#: 202021513, FS	Year Built: 2016
Bath: 2/0	Status: Sold	Remodeled:
Living Sq. Ft.: 1,154	List Date & DOM: 08-28-2020 & 28	Total Parking: 2
Land Sq. Ft.: 0	Condition: Excellent	Assessed Value
Lanai Sq. Ft.: 0	Frontage: Other	Building: \$0
Sq. Ft. Other: 0	Tax/Year: \$223/2020	Land: \$0
Total Sq. Ft. 1,154	Neighborhood: West Marina	Total: \$764,200
Maint./Assoc. \$646 / \$0	Flood Zone : Zone D - Tool	Stories / CPR: One / No
Parking: Covered - 2	Frontage: Other	
Zoning : 12 - A-2 Medium Density Apartme	View: Mountain	

Public Remarks: Priced below assessed value! FOUR bedroom available. The value is in the flexibility - this condo has an ADU feature with a separate mailbox and unit number. Featuring four bedrooms, two full bathrooms. One side is a 2/1 with a full kitchen. The other side is approximately 500 sf, 2/1. The two sides are separated by an entry foyer and washer dryer in the center. The 2/1 with a full kitchen side has an entry door that locks and the other side has a wet-bar with a full cabinetry system, that allows it to be a private 2/1 unit. Unit includes two parking stalls side by side with the option to purchase additional parking at this time. Hale Ka Lae is the newest building in the heart of Hawaii Kai located in a great community with many amenities to enjoy. **Sale Conditions:** None **Schools:** [Hahaione](#), [Niu Valley](#), [Kaiser](#) * [Request Showing](#), [Photos](#), [History](#), [Maps](#), [Deed](#), [Watch List](#), [Tax Info](#)



Address	Price	Bd & Bth	Living / Avg.	Land Avg.	Lanai	Occ.	FL	DOM
7000 Hawaii Kai Drive 3601	\$741,000	4 & 2/0	1,154 \$642	0 \$inf	0	0%	6	28

Address	Tax Maint. Ass.	Assessed Land	Assessed Building	Assessed Total	Ratio	Year & Remodeled
7000 Hawaii Kai Drive 3601	\$223 \$646 \$0	\$0	\$0	\$764,200	97%	2016 & NA

Address	Sold Price	Sold Date	Sold Ratio	Original Ratio	Sold Terms
7000 Hawaii Kai Drive 3601	\$741,000	10-23-2020	100%	100%	Other

[7000 Hawaii Kai Drive 3601](#) - MLS#: [202021513](#) - Priced below assessed value! FOUR bedroom available. The value is in the flexibility - this condo has an ADU feature with a separate mailbox and unit number. Featuring four bedrooms, two full bathrooms. One side is a 2/1 with a full kitchen. The other side is approximately 500 sf, 2/1. The two sides are separated by an entry foyer and washer dryer in the center. The 2/1 with a full kitchen side has an entry door that locks and the other side has a wet-bar with a full cabinetry system, that allows it to be a private 2/1 unit. Unit includes two parking stalls side by side with the option to purchase additional parking at this time. Hale Ka Lae is the newest building in the heart of Hawaii Kai located in a great community with many amenities to enjoy. **Region:** Hawaii Kai **Neighborhood:** West Marina **Condition:** Excellent **Parking:** Covered - 2 **Total Parking:** 2 **View:** Mountain **Frontage:** Other **Pool:** **Zoning:** 12 - A-2 Medium Density Apartme **Sale Conditions:** None **Schools:** [Hahaione](#), [Niu Valley](#), [Kaiser](#) * [Request Showing](#), [Photos](#), [History](#), [Maps](#), [Deed](#), [Watch List](#), [Tax Info](#)

DOM = Days on Market, Occ. = Occupancy, FL = Floor Number