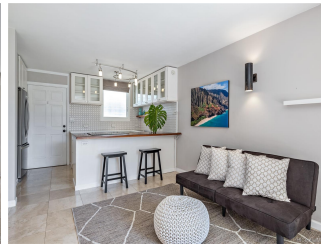


## **Diamond Head Terrace 3121 Pualei Circle Unit 23, Honolulu 96815 \* Diamond Head Terrace**

**\* \$458,000**

Sold Price: \$458,000	Sold Date: 12-18-2020	Sold Ratio: 100%
Beds: <b>1</b>	MLS#: <b><u>202021794</u>, FS</b>	Year Built: <b>1960</b>
Bath: <b>1/0</b>	Status: <b>Sold</b>	Remodeled: <b>2011</b>
Living Sq. Ft.: <b>438</b>	List Date & DOM: <b>09-09-2020 &amp; 49</b>	Total Parking: <b>1</b>
Land Sq. Ft.: <b>15,002</b>	Condition: <b>Excellent</b>	<a href="#">Assessed Value</a>
Lanai Sq. Ft.: <b>151</b>	Frontage: <b>Other</b>	Building: <b>\$265,900</b>
Sq. Ft. Other: <b>0</b>	Tax/Year: <b>\$113/2020</b>	Land: <b>\$121,800</b>
Total Sq. Ft. <b>589</b>	Neighborhood: <b>Diamond Head</b>	Total: <b>\$387,700</b>
Maint./Assoc. <b>\$374 / \$0</b>	<a href="#">Flood Zone</a> : <b>Zone X - Tool</b>	Stories / CPR: <b>Three+ / No</b>
Parking: <b>Covered - 1</b>	Frontage: <b>Other</b>	
<a href="#">Zoning</a> : <b>12 - A-2 Medium Density Apartme</b>	View: <b>City</b>	

**Public Remarks:** Dwell Magazine meets Diamond Head! Rarely available, highly renovated condo in the well managed Diamond Head Terrace building in coveted Pualei Circle. This trendy location is a short walk to the Gold Coast surf breaks, Outrigger Canoe Club, and Kapiolani Park is perfect for convenient, coastal Honolulu living. This 1 bedroom/1 bath, 438 sf condo with large lanai is covered in designer level travertine and includes a wall of upgraded custom cedar jalousie windows, wood-lined closet, designer tile backsplashes, and upgraded lighting and electrical. This second-floor retreat overlooks a saltwater pool and includes community laundry, bike storage area, and 1 covered parking. Attention to detail is evident throughout this convenient, comfortable, town retreat. A low maintenance fee, high-end finishes, and a fantastic location make this a winner! **Sale Conditions:** None **Schools:** [Waikiki](#), [Kaimuki](#), [Kaimuki](#) \* [Request Showing](#), [Photos](#), [History](#), [Maps](#), [Deed](#), [Watch List](#), [Tax Info](#)





Address	Price	Bd & Bth	Living / Avg.	Land   Avg.	Lanai	Occ.	FL	DOM
<a href="#">3121 Pualei Circle 23</a>	<a href="#">\$458,000</a>	1 & 1/0	438   \$1,046	15,002   \$31	151	58%	2	49

Address	Tax   Maint.   Ass.	Assessed Land	Assessed Building	Assessed Total	Ratio	Year & Remodeled
<a href="#">3121 Pualei Circle 23</a>	\$113   \$374   \$0	\$121,800	\$265,900	\$387,700	118%	1960 & 2011

Address	Sold Price	Sold Date	Sold Ratio	Original Ratio	Sold Terms
<a href="#">3121 Pualei Circle 23</a>	\$458,000	12-18-2020	100%	100%	Conventional

<p><a href="#">3121 Pualei Circle 23</a> - MLS#: <a href="#">202021794</a> - Dwell Magazine meets Diamond Head! Rarely available, highly renovated condo in the well managed Diamond Head Terrace building in coveted Pualei Circle. This trendy location is a short walk to the Gold Coast surf breaks, Outrigger Canoe Club, and Kapiolani Park is perfect for convenient, coastal Honolulu living. This 1 bedroom/1 bath, 438 sf condo with large lanai is covered in designer level travertine and includes a wall of upgraded custom cedar Jalousie windows, wood-lined closet, designer tile backsplashes, and upgraded lighting and electrical. This second-floor retreat overlooks a saltwater pool and includes community laundry, bike storage area, and 1 covered parking. Attention to detail is evident throughout this convenient, comfortable, town retreat. A low maintenance fee, high-end finishes, and a fantastic location make this a winner! <b>Region:</b> Diamond Head <b>Neighborhood:</b> Diamond Head <b>Condition:</b> Excellent <b>Parking:</b> Covered - 1 <b>Total Parking:</b> 1 <b>View:</b> City <b>Frontage:</b> Other <b>Pool:</b> <b>Zoning:</b> 12 - A-2 Medium Density Apartme <b>Sale Conditions:</b> None <b>Schools:</b> <a href="#">Waikiki</a>, <a href="#">Kaimuki</a>, <a href="#">Kaimuki</a> * <a href="#">Request Showing</a>, <a href="#">Photos</a>, <a href="#">History</a>, <a href="#">Maps</a>, <a href="#">Deed</a>, <a href="#">Watch List</a>, <a href="#">Tax Info</a></p>					
---	--	--	--	--	--

DOM = Days on Market, Occ. = Occupancy, FL = Floor Number