

Pearlridge Square 98-288 Kaonohi Street Unit 1608, Aiea 96701 * Pearlridge Square *

\$239,900

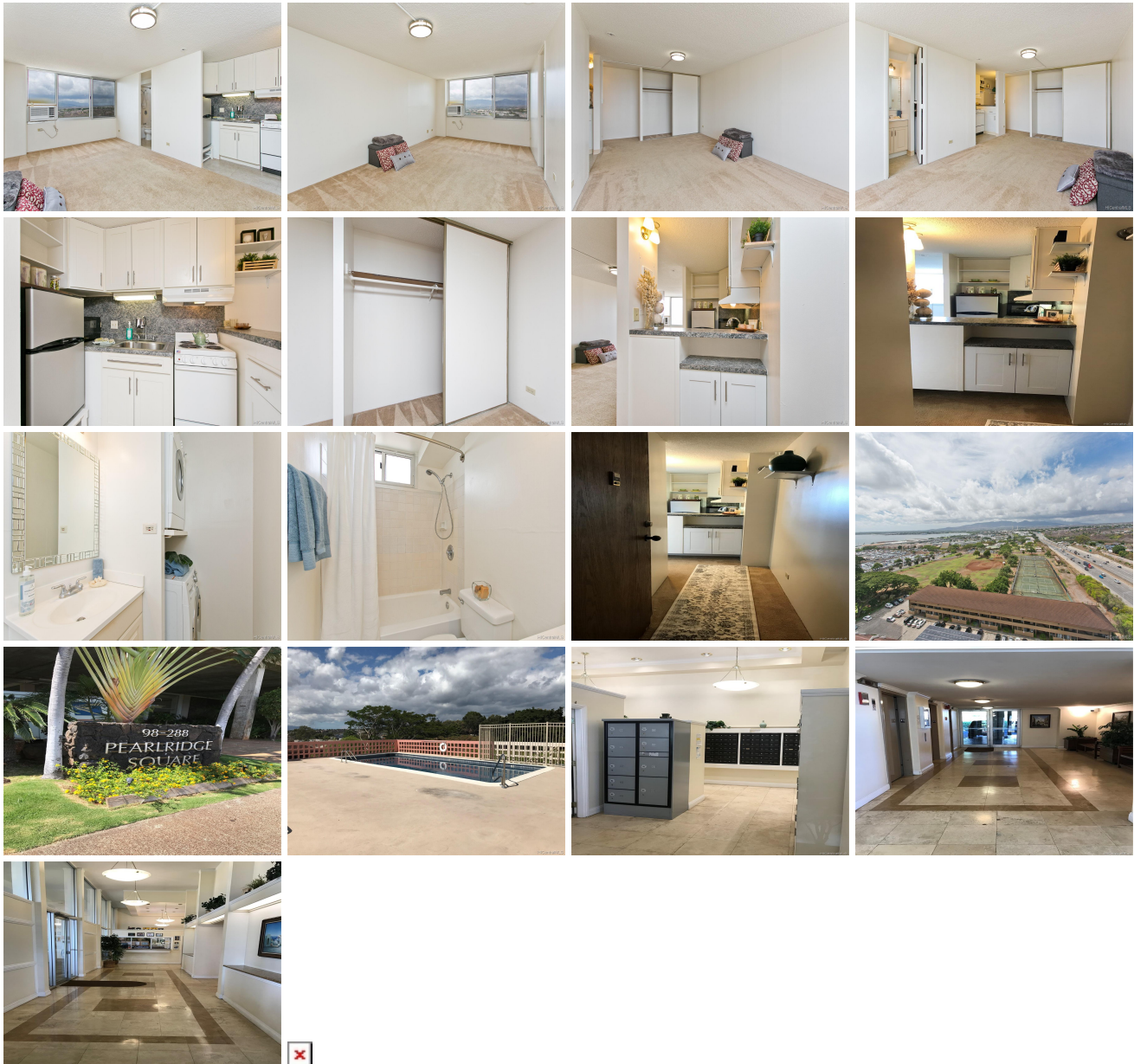
Sold Price: \$239,900	Sold Date: 11-24-2020	Sold Ratio: 100%
Beds: 0	MLS#: <u>202025014</u>, FS	Year Built: 1980
Bath: 1/0	Status: Sold	Remodeled: 1995
Living Sq. Ft.: 360	List Date & DOM: 10-15-2020 & 4	Total Parking: 1
Land Sq. Ft.: 50,007	Condition: Above Average	Assessed Value
Lanai Sq. Ft.: 0	Frontage: Other	Building: \$217,800
Sq. Ft. Other: 0	Tax/Year: \$68/2020	Land: \$16,300
Total Sq. Ft. 360	Neighborhood: Pearlridge	Total: \$234,100
Maint./Assoc. \$299 / \$0	Flood Zone : Zone X - Tool	Stories / CPR: One / No
Parking: Covered - 1, Garage, Guest, Secured Entry	Frontage: Other	

[Zoning](#): **12 - A-2 Medium Density Apartme**

View: **City, Mountain**

Public Remarks: Great starter or investment unit in the heart of Pearlridge/Aiea. Close to Pearlridge Center, Restaurants and more. New paint throughout. Kitchen updated with modern cabinets to maximize space. Window AC. Washer & dryer in unit. Dryer is new. Nice lobby area. Ample guest parking. Secured parking. Resident manager. Convenient parking stall on 3rd floor, close to entry door. Amenities on 3rd floor: Pool, BBQ, sauna, fitness room, community Laundry. Low maintenance fees including cold/hot water, sewer, cable (more than basic cable) and internet. Can't beat this one! Sold in As is Condition. Please follow HBR COVID-19 Showing Guidelines. Mask required. No more than 5 people in the unit at one time including agent(s).

Sale Conditions: None **Schools:** [Pearl Ridge](#), [Aiea](#), [Aiea](#) * [Request Showing](#), [Photos](#), [History](#), [Maps](#), [Deed](#), [Watch List](#), [Tax Info](#)



Address	Price	Bd & Bth	Living / Avg.	Land Avg.	Lanai	Occ.	FL	DOM
98-288 Kaonohi Street 1608	\$239,900	0 & 1/0	360 \$666	50,007 \$5	0	34%	16	4

Address	Tax Maint. Ass.	Assessed Land	Assessed Building	Assessed Total	Ratio	Year & Remodeled
98-288 Kaonohi Street 1608	\$68 \$299 \$0	\$16,300	\$217,800	\$234,100	102%	1980 & 1995

Address	Sold Price	Sold Date	Sold Ratio	Original Ratio	Sold Terms
98-288 Kaonohi Street 1608	\$239,900	11-24-2020	100%	100%	Conventional

[98-288 Kaonohi Street 1608](#) - MLS#: [202025014](#) - Great starter or investment unit in the heart of Pearlridge/Aiea. Close to Pearlridge Center, Restaurants and more. New paint throughout. Kitchen updated with modern cabinets to maximize space. Window AC. Washer & dryer in unit. Dryer is new. Nice lobby area. Ample guest parking. Secured parking. Resident manager. Convenient parking stall on 3rd floor, close to entry door. Amenities on 3rd floor: Pool, BBQ, sauna, fitness room, community Laundry. Low maintenance fees including cold/hot water, sewer, cable (more than basic cable) and internet. Can't beat this one! Sold in As is Condition. Please follow HBR COVID-19 Showing Guidelines. Mask required. No more than 5 people in the unit at one time including agent(s). **Region:** Pearl City **Neighborhood:** Pearlridge **Condition:** Above Average **Parking:** Covered - 1, Garage, Guest, Secured Entry **Total Parking:** 1 **View:** City, Mountain **Frontage:** Other **Pool:** **Zoning:** 12 - A-2 Medium Density Apartme **Sale Conditions:** None **Schools:** [Pearl Ridge](#), [Aiea](#), [Aiea](#) * [Request Showing](#), [Photos](#), [History](#), [Maps](#), [Deed](#), [Watch List](#), [Tax Info](#)

DOM = Days on Market, Occ. = Occupancy, FL = Floor Number