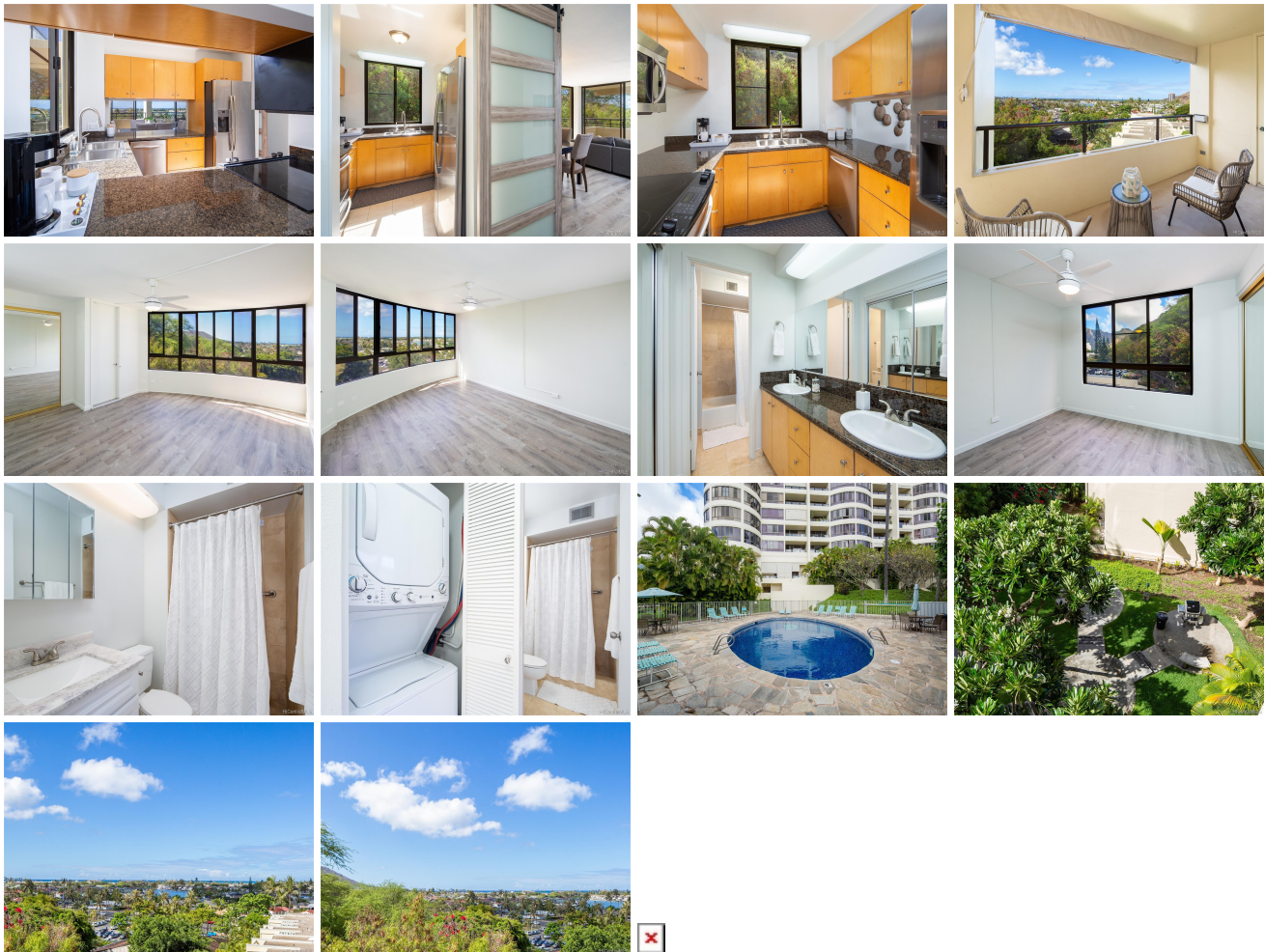


Plaza Hawaii Kai 6770 Hawaii Kai Drive Unit 409, Honolulu 96825 * Plaza Hawaii Kai *

\$559,000

Sold Price: \$500,000	Sold Date: 12-18-2020	Sold Ratio: 89%
Beds: 2	MLS#: 202025501, FS	Year Built: 1974
Bath: 2/0	Status: Sold	Remodeled:
Living Sq. Ft.: 1,402	List Date & DOM: 10-06-2020 & 65	Total Parking: 2
Land Sq. Ft.: 125,583	Condition: Excellent	Assessed Value
Lanai Sq. Ft.: 241	Frontage:	Building: \$369,600
Sq. Ft. Other: 0	Tax/Yr: \$123/2020	Land: \$193,700
Total Sq. Ft. 1,643	Neighborhood: Hahaione-lower	Total: \$563,300
Maint./Assoc. \$1,324 / \$0	Flood Zone : Zone D - Tool	Stories / CPR: / No
Parking: Covered - 2	Frontage:	
Zoning : 12 - A-2 Medium Density Apartme	View: Marina/Canal, Mountain, Ocean	

Public Remarks: BEAUTIFUL Marina, Maunalua Bay Ocean & Koko Head views! Spacious 2 bedroom/2 bath quiet corner desired end unit at Plaza Hawaii Kai. Enjoy views from every room! Spacious lanais are perfect for outdoor enjoyment and entertaining. The only unit on this floor with a wrap-around lanai. Great floor plan. New flooring. Kitchen has stainless steel appliances. Very Secure & well managed building. Lots of Amenities including Pool & BBQ area. 2 covered side by side parking stalls & ample guest parking. Storage locker. VA Approved and Pet Friendly. Conveniently located in the Heart of Hawaii Kai next to the Oahu Club, Costco, Shopping Centers and Dining options. **Sale Conditions:** None **Schools:** [Hahaione](#), [Niu Valley](#), [Kaiser](#) * [Request Showing](#), [Photos](#), [History](#), [Maps](#), [Deed](#), [Watch List](#), [Tax Info](#)



Address	Price	Bd & Bth	Living / Avg.	Land Avg.	Lanai	Occ.	FL	DOM
6770 Hawaii Kai Drive 409	\$559,000	2 & 2/0	1,402 \$399	125,583 \$4	241	54%	4	65

Address	Tax Maint. Ass.	Assessed Land	Assessed Building	Assessed Total	Ratio	Year & Remodeled
6770 Hawaii Kai Drive 409	\$123 \$1,324 \$0	\$193,700	\$369,600	\$563,300	99%	1974 & NA

Address	Sold Price	Sold Date	Sold Ratio	Original Ratio	Sold Terms
6770 Hawaii Kai Drive 409	\$500,000	12-18-2020	89%	89%	Cash

[6770 Hawaii Kai Drive 409](#) - MLS#: [202025501](#) - BEAUTIFUL Marina, Maunalua Bay Ocean & Koko Head views! Spacious 2 bedroom/2 bath quiet corner desired end unit at Plaza Hawaii Kai. Enjoy views from every room! Spacious lanais are perfect for outdoor enjoyment and entertaining. The only unit on this floor with a wrap-around lanai. Great floor plan. New flooring. Kitchen has stainless steel appliances. Very Secure & well managed building. Lots of Amenities including Pool & BBQ area. 2 covered side by side parking stalls & ample guest parking. Storage locker. VA Approved and Pet Friendly. Conveniently located in the Heart of Hawaii Kai next to the Oahu Club, Costco, Shopping Centers and Dining options. **Region:** Hawaii Kai **Neighborhood:** Hahaione-lower **Condition:** Excellent **Parking:** Covered - 2 **Total Parking:** 2 **View:** Marina/Canal, Mountain, Ocean **Frontage:** **Pool:** **Zoning:** 12 - A-2 Medium Density Apartme **Sale Conditions:** None **Schools:** [Hahaione](#), [Niu Valley](#), [Kaiser](#) * [Request Showing](#), [Photos](#), [History](#), [Maps](#), [Deed](#), [Watch List](#), [Tax Info](#)

DOM = Days on Market, Occ. = Occupancy, FL = Floor Number