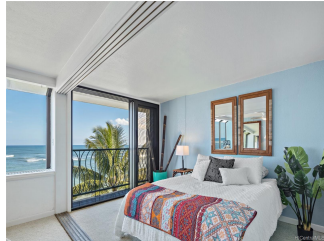
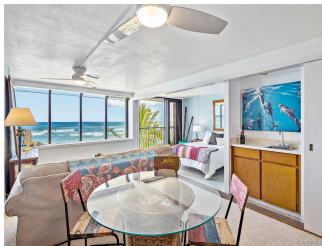


Sunset Shores 68-121 Au Street Unit 502, Waialua 96791 * Sunset Shores * \$625,000 *

Originally \$645,000

Sold Price: \$625,000	Sold Date: 12-31-2020	Sold Ratio: 100%
Beds: 2	MLS#: <u>202027012</u>, FS	Year Built: 1982
Bath: 2/0	Status: Sold	Remodeled:
Living Sq. Ft.: 860	List Date & DOM: 10-13-2020 & 43	Total Parking: 1
Land Sq. Ft.: 0	Condition: Excellent	Assessed Value
Lanai Sq. Ft.: 0	Ocean, Sandy Beach, Waterfront	Building: \$574,200
Sq. Ft. Other: 0	Tax/Year: \$183/2020	Land: \$52,300
Total Sq. Ft. 860	Neighborhood: Waialua	Total: \$626,500
Maint./Assoc. \$818 / \$0	Flood Zone : Zone VE - Tool	Stories / CPR: Three+ / No
Parking: Assigned, Covered - 1	Frontage: Ocean, Sandy Beach, Waterfront	View: Coastline, Mountain, Ocean, Sunset
Zoning : 12 - A-2 Medium Density Apartme		

Public Remarks: Escape to this oceanfront penthouse condo on Oahu's North Shore! This 2-bedroom, 2-bathroom unit occupies the top floor of the desirable and well-managed Sunset Shores building. Wake up to the sounds of the surf from your Juliet balcony and enjoy the sweeping ocean views from Ka'ena point to Waimea Bay. The secluded Mokuieia white sand beaches extend for miles from your doorstep. This secure building combines the nostalgic charm of old Hawaii with modern amenities including a keyed elevator, open air hallways, saltwater pool, hot tub, covered parking, oceanfront barbeque area, and high speed WiFi. Enjoy the nearby jogging and bicycle path, hiking trails, and basketball court at the neighboring beach park. The location in historic Waialua is 5 minutes from Haleiwa and its world-class surfing, diving, restaurants, and farmers markets. Waialua is also only 35 minutes to Honolulu International Airport. Waikiki is close enough for an evening of fine dining and shopping. **Sale Conditions:** None **Schools:** [Waialua](#), [Waialua](#), [Waialua](#) * [Request Showing](#), [Photos](#), [History](#), [Maps](#), [Deed](#), [Watch List](#), [Tax Info](#)





Address	Price	Bd & Bth	Living / Avg.	Land Avg.	Lanai	Occ.	FL	DOM
68-121 Au Street 502	\$625,000	2 & 2/0	860 \$727	0 \$inf	0	53%	5	43

Address	Tax Maint. Ass.	Assessed Land	Assessed Building	Assessed Total	Ratio	Year & Remodeled
68-121 Au Street 502	\$183 \$818 \$0	\$52,300	\$574,200	\$626,500	100%	1982 & NA

Address	Sold Price	Sold Date	Sold Ratio	Original Ratio	Sold Terms
68-121 Au Street 502	\$625,000	12-31-2020	100%	97%	Conventional

[68-121 Au Street 502](#) - MLS#: [202027012](#) - Original price was \$645,000 - Escape to this oceanfront penthouse condo on Oahu's North Shore! This 2-bedroom, 2-bathroom unit occupies the top floor of the desirable and well-managed Sunset Shores building. Wake up to the sounds of the surf from your Juliet balcony and enjoy the sweeping ocean views from Ka'ena point to Waimea Bay. The secluded Mokuleia white sand beaches extend for miles from your doorstep. This secure building combines the nostalgic charm of old Hawaii with modern amenities including a keyed elevator, open air hallways, saltwater pool, hot tub, covered parking, oceanfront barbeque area, and high speed WiFi. Enjoy the nearby jogging and bicycle path, hiking trails, and basketball court at the neighboring beach park. The location in historic Waialua is 5 minutes from Haleiwa and its world-class surfing, diving, restaurants, and farmers markets. Waialua is also only 35 minutes to Honolulu International Airport. Waikiki is close enough for an evening of fine dining and shopping. **Region:** North Shore
Neighborhood: Waialua **Condition:** Excellent **Parking:** Assigned, Covered - 1 **Total Parking:** 1 **View:** Coastline, Mountain, Ocean, Sunset **Frontage:** Ocean, Sandy Beach, Waterfront **Pool:** **Zoning:** 12 - A-2 Medium Density Apartme **Sale Conditions:** None **Schools:** [Waialua](#), [Waialua](#), [Waialua](#) * [Request Showing](#), [Photos](#), [History](#), [Maps](#), [Deed](#), [Watch List](#), [Tax Info](#)

DOM = Days on Market, Occ. = Occupancy, FL = Floor Number