

Poha Kea Point 3 46-159 Meheanu Loop Unit 3251, Kaneohe 96744 * Poha Kea Point 3 *

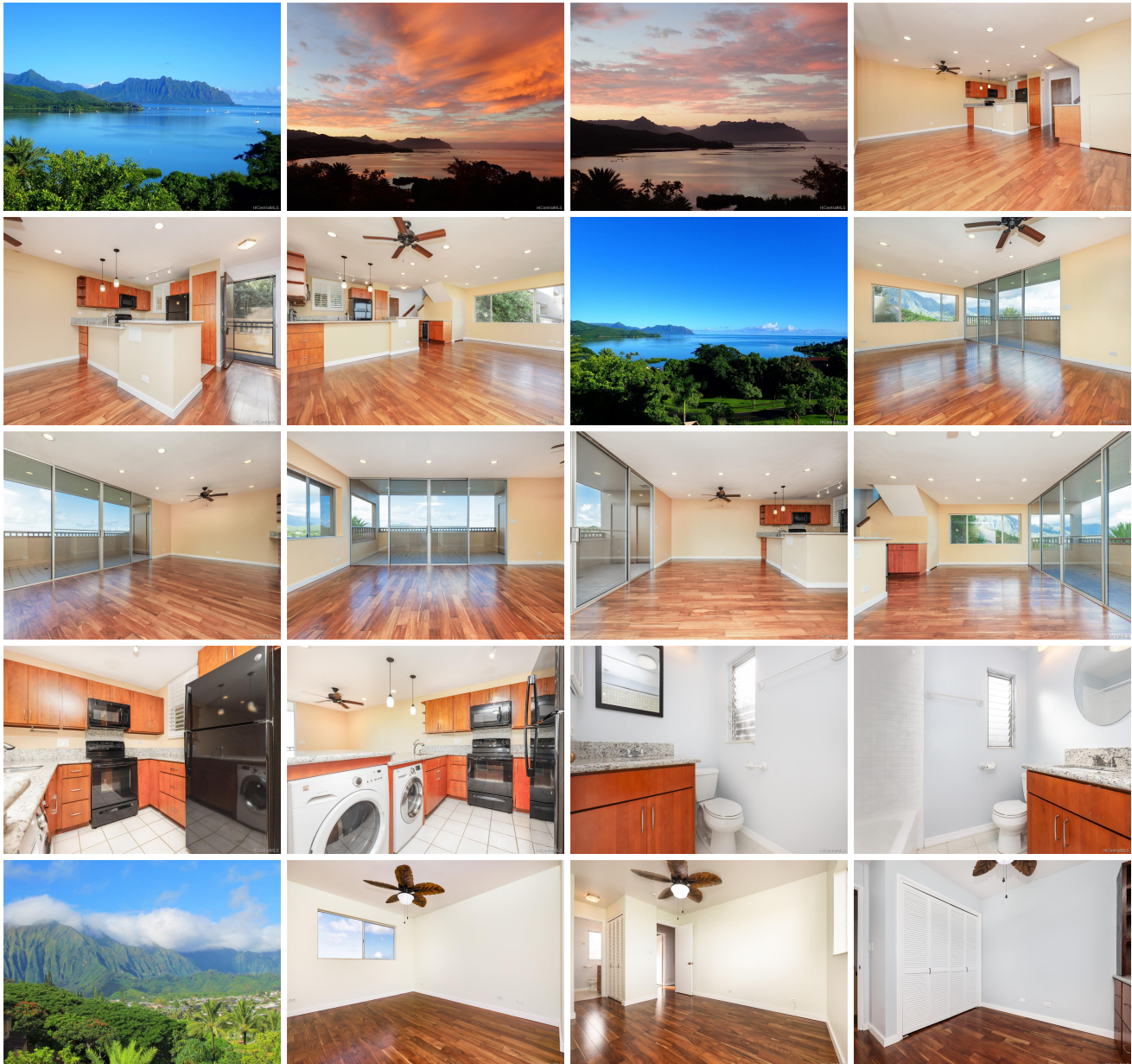
\$650,000

Sold Price: \$645,000	Sold Date: 02-08-2021	Sold Ratio: 99%
Beds: 2	MLS#: <u>202030370</u>, FS	Year Built: 1986
Bath: 2/0	Status: Sold	Remodeled:
Living Sq. Ft.: 896	List Date & DOM: 12-29-2020 & 10	Total Parking: 2
Land Sq. Ft.: 669,517	Condition: Excellent	Assessed Value
Lanai Sq. Ft.: 0	Frontage: Other	Building: \$332,800
Sq. Ft. Other: 0	Tax/Year: \$167/2020	Land: \$237,600
Total Sq. Ft. 896	Neighborhood: Lilipuna	Total: \$570,400
Maint./Assoc. \$783 / \$0	Flood Zone : Zone X - Tool	Stories / CPR: Two / No
Parking: Assigned, Covered - 1, Open - 1, Tandem	Frontage: Other	

[Zoning](#): **03 - R10 - Residential District**

View: **Mountain, Ocean, Sunrise**

Public Remarks: Top floor corner unit in highly desirable Poha Kea Point! Come home and unwind on your large private lanai and enjoy the spectacular ocean views of Kaneohe Bay! Newly remodeled unit features: 2 bed/2bath/2prkg, acacia hardwood floors, new kitchen and baths, cabinets, appliances, full-sized storage closet in lanai, and upgraded lighting throughout. This corner unit also adds an extra wall with windows for additional views and natural lighting. Conveniently located in central Kaneohe and close to Windward Mall, Kaneohe Bay Shopping Center, schools, farmers markets, Heeia Kea Pier, doctors offices, bus stops, Pali and Likelike Hwy, H3, and much more! Pet-friendly complex. Enjoy the amenities Poha Kea Point has to offer: pools, hot tubs, sauna, tennis courts, walking paths, BBQs, and security. **Sale Conditions:** None **Schools:** , , * [Request Showing, Photos, History, Maps, Deed, Watch List, Tax Info](#)





Address	Price	Bd & Bth	Living / Avg.	Land Avg.	Lanai	Occ.	FL	DOM
46-159 Meheanu Loop 3251	\$650,000	2 & 2/0	896 \$725	669,517 \$1	0	63%	2	10

Address	Tax Maint. Ass.	Assessed Land	Assessed Building	Assessed Total	Ratio	Year & Remodeled
46-159 Meheanu Loop 3251	\$167 \$783 \$0	\$237,600	\$332,800	\$570,400	114%	1986 & NA

Address	Sold Price	Sold Date	Sold Ratio	Original Ratio	Sold Terms
46-159 Meheanu Loop 3251	\$645,000	02-08-2021	99%	99%	Conventional

[46-159 Meheanu Loop 3251](#) - MLS#: [202030370](#) - Top floor corner unit in highly desirable Poha Kea Point! Come home and unwind on your large private lanai and enjoy the spectacular ocean views of Kaneohe Bay! Newly remodeled unit features: 2 bed/2bath/2prkg, acacia hardwood floors, new kitchen and baths, cabinets, appliances, full-sized storage closet in lanai, and upgraded lighting throughout. This corner unit also adds an extra wall with windows for additional views and natural lighting. Conveniently located in central Kaneohe and close to Windward Mall, Kaneohe Bay Shopping Center, schools, farmers markets, Heeia Kea Pier, doctors offices, bus stops, Pali and Likelike Hwy, H3, and much more! Pet-friendly complex. Enjoy the amenities Poha Kea Point has to offer: pools, hot tubs, sauna, tennis courts, walking paths, BBQs, and security. **Region:** Kaneohe **Neighborhood:** Lilipuna **Condition:** Excellent **Parking:** Assigned, Covered - 1, Open - 1, Tandem **Total Parking:** 2 **View:** Mountain, Ocean, Sunrise **Frontage:** Other **Pool:** **Zoning:** 03 - R10 - Residential District **Sale Conditions:** None **Schools:** , , * [Request Showing](#), [Photos](#), [History](#), [Maps](#), [Deed](#), [Watch List](#), [Tax Info](#)

DOM = Days on Market, Occ. = Occupancy, FL = Floor Number