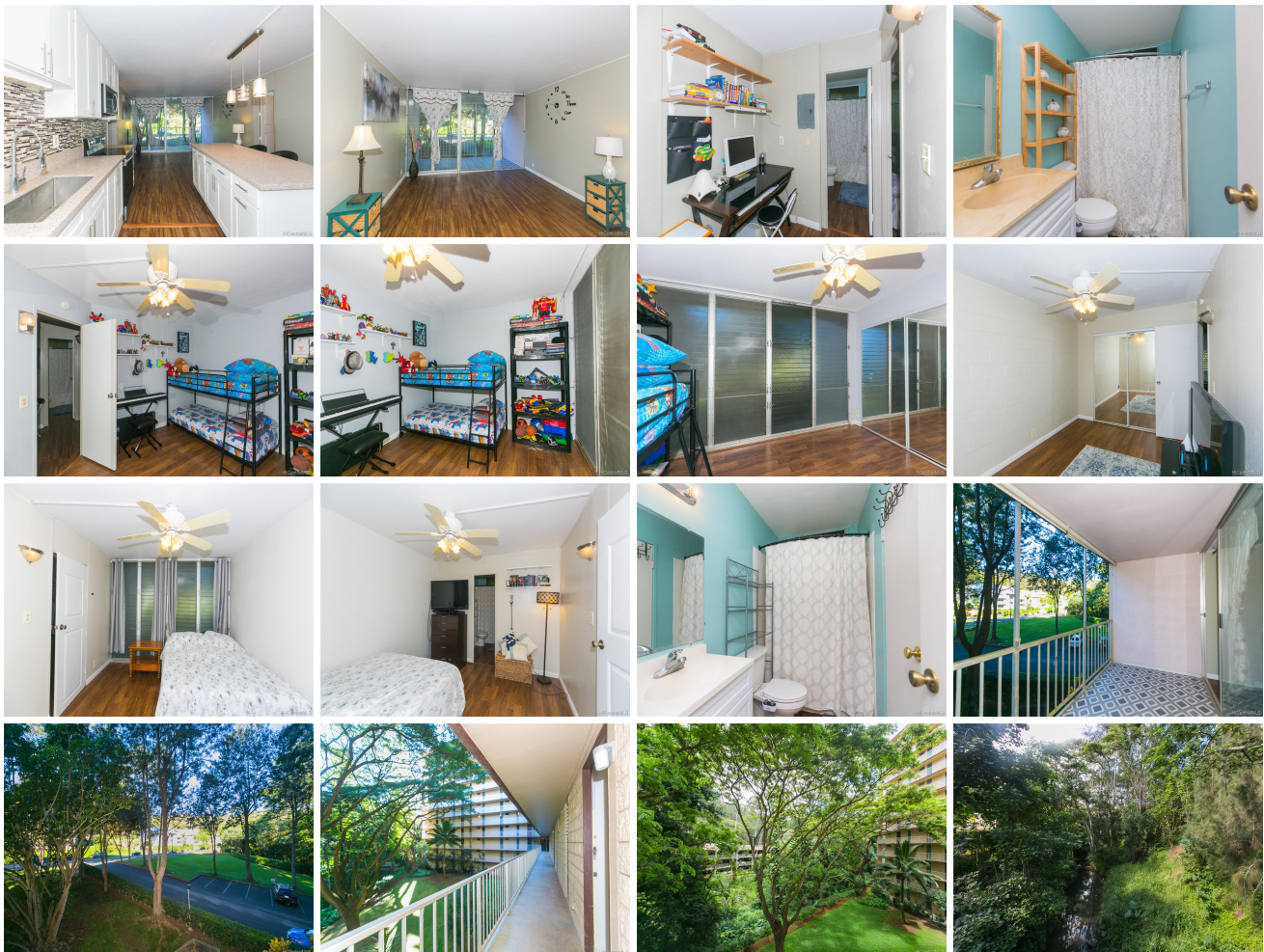


Waikalani Woodlands 95-273 Waikalani Drive Unit D306, Mililani 96789 * Waikalani

Woodlands * \$389,000

Sold Price: \$389,000	Sold Date: 03-04-2021	Sold Ratio: 100%
Beds: 3	MLS#: <u>202100820</u>, FS	Year Built: 1976
Bath: 2/0	Status: Sold	Remodeled:
Living Sq. Ft.: 1,023	List Date & DOM: 01-14-2021 & 14	Total Parking: 2
Land Sq. Ft.: 1,135,914	Condition: Above Average, Excellent	Assessed Value
Lanai Sq. Ft.: 97	Frontage:	Building: \$48,800
Sq. Ft. Other: 0	Tax/Year: \$69/2020	Land: \$285,300
Total Sq. Ft. 1,120	Neighborhood: Waipio Acres-waikalani Woodlands	Total: \$334,100
Maint./Assoc. \$721 / \$0	Flood Zone : Zone D - Tool	Stories / CPR: 8-14 / No
Parking: Assigned, Guest, Open - 2	Frontage:	
Zoning : 05 - R-5 Residential District	View: Garden	

Public Remarks: Newly remodeled 3 bedroom, 2 bath, 2 parking corner end unit. On the low third floor and located in Launani Valley. This unit features an open layout concept with an upgraded kitchen including brand new stainless steel appliances, washer and dryer, plenty of cabinet space and a huge granite island for gathering. Additional upgrades include vinyl flooring throughout the unit, tiled balcony, freshly painted interior and newly installed toilets with added bidet. Amenities include pool, bbq/ picnic area, playground, swings and trash chute. Pet friendly. Two parking spaces and additional guest spaces are available. Get it before it's gone. In the heart of central Oahu and easily accessible to freeway, Schofield, Wheeler, Mililani and Wahiawa. **Sale Conditions:** None **Schools:** [Wheeler](#), [Wheeler](#), [Leilehua](#) * [Request Showing](#), [Photos](#), [History](#), [Maps](#), [Deed](#), [Watch List](#), [Tax Info](#)





Address	Price	Bd & Bth	Living / Avg.	Land Avg.	Lanai	Occ.	FL	DOM
95-273 Waikalani Drive D306	\$389,000	3 & 2/0	1,023 \$380	1,135,914 \$0	97	63%	3	14

Address	Tax Maint. Ass.	Assessed Land	Assessed Building	Assessed Total	Ratio	Year & Remodeled
95-273 Waikalani Drive D306	\$69 \$721 \$0	\$285,300	\$48,800	\$334,100	116%	1976 & NA

Address	Sold Price	Sold Date	Sold Ratio	Original Ratio	Sold Terms
95-273 Waikalani Drive D306	\$389,000	03-04-2021	100%	100%	VA

[95-273 Waikalani Drive D306](#) - MLS#: [202100820](#) - Newly remodeled 3 bedroom, 2 bath, 2 parking corner end unit. On the low third floor and located in Launani Valley. This unit features an open layout concept with an upgraded kitchen including brand new stainless steel appliances, washer and dryer, plenty of cabinet space and a huge granite island for gathering. Additional upgrades include vinyl flooring throughout the unit, tiled balcony, freshly painted interior and newly installed toilets with added bidet. Amenities include pool, bbq/ picnic area, playground, swings and trash chute. Pet friendly. Two parking spaces and additional guest spaces are available. Get it before it's gone. In the heart of central Oahu and easily accessible to freeway, Schofield, Wheeler, Mililani and Wahiawa. **Region:** Central **Neighborhood:** Waipio Acres-waikalani Woodlands **Condition:** Above Average, Excellent **Parking:** Assigned, Guest, Open - 2 **Total Parking:** 2 **View:** Garden **Frontage:** **Pool:** **Zoning:** 05 - R-5 Residential District **Sale Conditions:** None **Schools:** [Wheeler](#), [Wheeler](#), [Leilehua](#) * [Request Showing](#), [Photos](#), [History](#), [Maps](#), [Deed](#), [Watch List](#), [Tax Info](#)

DOM = Days on Market, Occ. = Occupancy, FL = Floor Number