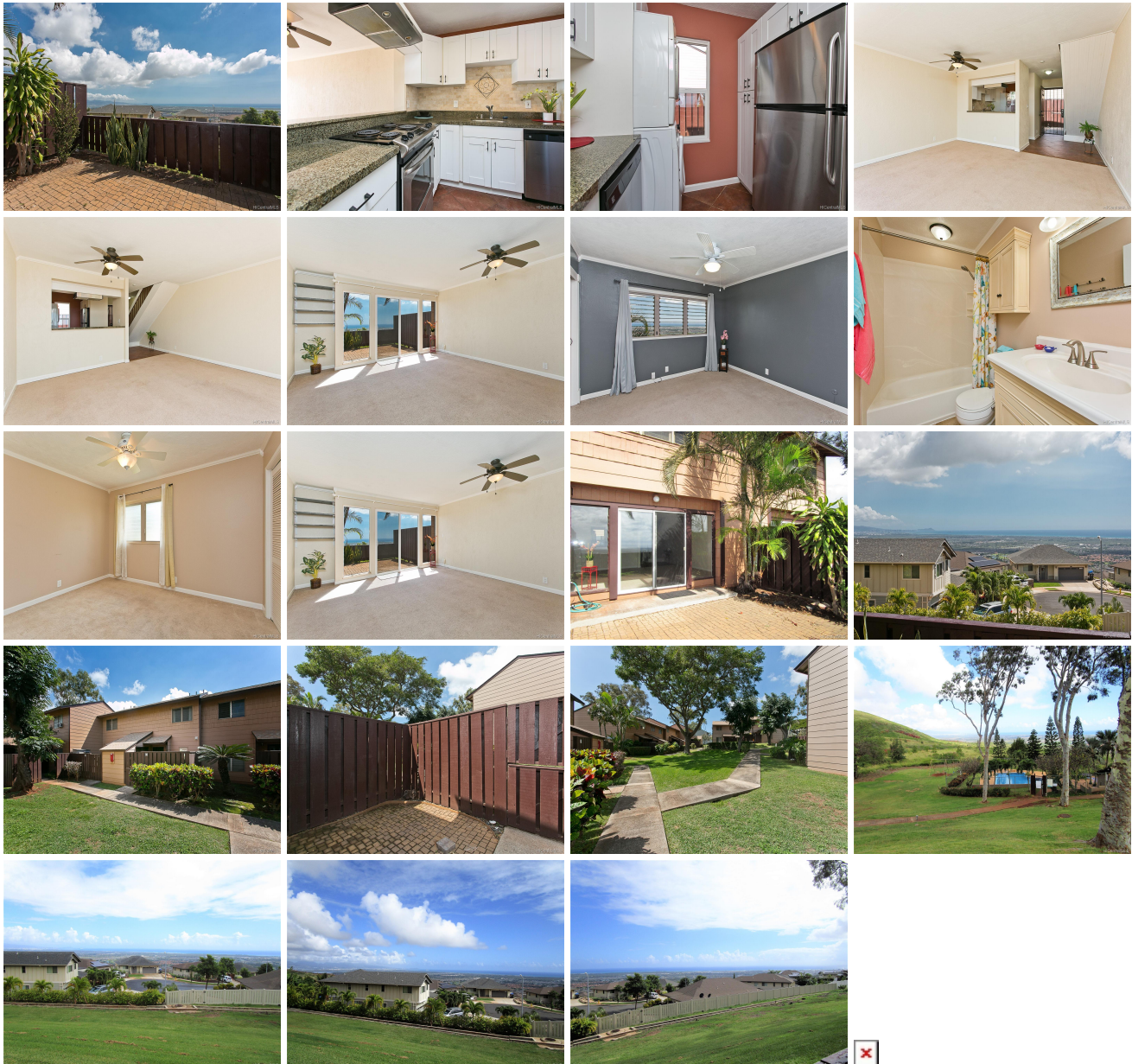


**Makakilo Hale 2 92-915 Welo Street Unit 104, Kapolei 96707 \* Makakilo Hale 2 \* \$445,000**

**\* Originally \$419,000**

|  |   |   |
|--|---|---|
| Sold Price: \$423,000  | Sold Date: 04-07-2021                               | Sold Ratio: 95%                             |
| Beds: <b>2</b>   | MLS#: <b><u>202104191</u></b> , FS                  | Year Built: <b>1975</b>                     |
| Bath: <b>1/0</b>   | Status: <b>Sold</b>                                 | Remodeled: <b>2009</b>                      |
| Living Sq. Ft.: <b>891</b>                                     | List Date & DOM: <b>02-18-2021 &amp; 5</b>          | Total Parking: <b>2</b>                     |
| Land Sq. Ft.: <b>700,619</b>                                   | Condition: <b>Above Average</b>                     | <a href="#">Assessed Value</a>              |
| Lanai Sq. Ft.: <b>200</b>                                      | Frontage: <b>Other</b>                              | Building: <b>\$192,800</b>                  |
| Sq. Ft. Other: <b>0</b>  | Tax/Year: <b>\$118/2020</b>                         | Land: <b>\$208,700</b>                      |
| Total Sq. Ft. <b>1,091</b>                                     | Neighborhood: <b>Makakilo-upper</b>                 | Total: <b>\$401,500</b>                     |
| Maint./Assoc. <b>\$528 / \$0</b>                               | <a href="#">Flood Zone</a> : <b>Zone D - Tool</b>   | Stories / CPR: <b>Two, Split Level / No</b> |
| Parking: <b>Assigned, Guest, Open - 2, Street</b>              | Frontage: <b>Other</b>                              |   |
| <a href="#">Zoning</a> : <b>11 - A-1 Low Density Apartment</b> | View: <b>Diamond Head, Mountain, Ocean, Sunrise</b> |   |

**Public Remarks:** Panoramic View all the way to Diamond Head! Rarely available on the Perimeter in Makakilo Hale II. Remodeled and move in ready! Modern kitchen cabinets & countertops, designer color pallet with crown moulding, vinyl windows, ceiling fans. This townhome lives like a house! Living and dining area are on the first floor, with bedrooms and bath upstairs. Gated entry to front patio area which includes extra storage closet - is a plus, however it's the courtyard patio with brick pavers off the living room that you are going to fall in love with! Tropical foliage frames the picture perfect View! Relax, unwind and enjoy island life!... AND.... included are 2 conveniently located assigned Parking stalls. **Sale Conditions:** None  
**Schools:** [Mauka Lani](#), [Kapolei](#), [Kapolei](#) \* [Request Showing](#), [Photos](#), [History](#), [Maps](#), [Deed](#), [Watch List](#), [Tax Info](#)



| Address                                | Price            | Bd & Bth | Living / Avg. | Land   Avg.   | Lanai | Occ. | FL | DOM |
|--|------------------|----------|---------------|---------------|-------|------|----|-----|
| <a href="#">92-915 Welo Street 104</a> | <b>\$445,000</b> | 2 & 1/0  | 891   \$499   | 700,619   \$1 | 200   | 70%  | 1  | 5   |

| Address                                | Tax   Maint.   Ass. | Assessed Land | Assessed Building | Assessed Total | Ratio | Year & Remodeled |
|--|---------------------|---------------|-------------------|----------------|-------|------------------|
| <a href="#">92-915 Welo Street 104</a> | \$118   \$528   \$0 | \$208,700     | \$192,800         | \$401,500      | 111%  | 1975 & 2009      |

| Address                                | Sold Price | Sold Date  | Sold Ratio | Original Ratio | Sold Terms   |
|--|------------|------------|------------|----------------|--------------|
| <a href="#">92-915 Welo Street 104</a> | \$423,000  | 04-07-2021 | 95%        | 101%           | Conventional |

[92-915 Welo Street 104](#) - MLS#: [202104191](#) - Original price was \$419,000 - Panoramic View all the way to Diamond Head! Rarely available on the Perimeter in Makakilo Hale II. Remodeled and move in ready! Modern kitchen cabinets & countertops, designer color pallet with crown moulding, vinyl windows, ceiling fans. This townhome lives like a house! Living and dining area are on the first floor, with bedrooms and bath upstairs. Gated entry to front patio area which includes extra storage closet - is a plus, however it's the courtyard patio with brick pavers off the living room that you are going to fall in love with! Tropical foliage frames the picture perfect View! Relax, unwind and enjoy island life!... AND.... included are 2 conveniently located assigned Parking stalls. **Region:** Makakilo **Neighborhood:** Makakilo-upper **Condition:** Above Average **Parking:** Assigned, Guest, Open - 2, Street **Total Parking:** 2 **View:** Diamond Head, Mountain, Ocean, Sunrise **Frontage:** Other **Pool:** **Zoning:** 11 - A-1 Low Density Apartment **Sale Conditions:** None **Schools:** [Mauka Lani](#), [Kapolei](#), [Kapolei](#) \* [Request Showing](#), [Photos](#), [History](#), [Maps](#), [Deed](#), [Watch List](#), [Tax Info](#)

DOM = Days on Market, Occ. = Occupancy, FL = Floor Number