

## **Makaha Valley Towers 84-680 Kili Drive Unit 1007, Waianae 96792 \* Makaha Valley Towers**

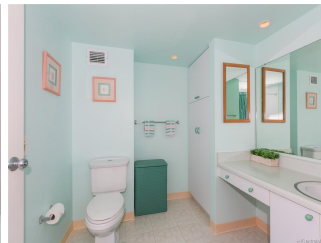
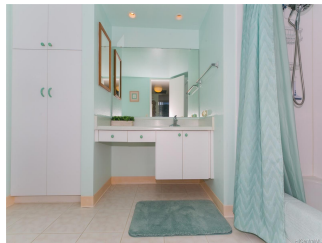
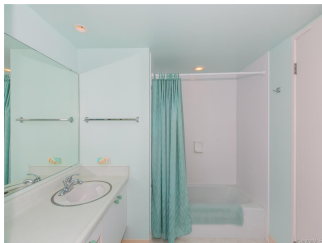
**\* \$199,000**

Sold Price: \$190,000	Sold Date: 04-30-2021	Sold Ratio: 95%
Beds: <b>1</b>	MLS#: <b><u>202104392</u>, FS</b>	Year Built: <b>1970</b>
Bath: <b>1/0</b>	Status: <b>Sold</b>	Remodeled:
Living Sq. Ft.: <b>680</b>	List Date & DOM: <b>02-22-2021 &amp; 29</b>	Total Parking: <b>1</b>
Land Sq. Ft.: <b>0</b>	Condition: <b>Above Average</b>	<a href="#">Assessed Value</a>
Lanai Sq. Ft.: <b>60</b>	Frontage: <b>Other</b>	Building: <b>\$148,300</b>
Sq. Ft. Other: <b>0</b>	Tax/Year: <b>\$53/2021</b>	Land: <b>\$31,600</b>
Total Sq. Ft. <b>740</b>	Neighborhood: <b>Makaha</b>	Total: <b>\$179,900</b>
Maint./Assoc. <b>\$843 / \$0</b>	<a href="#">Flood Zone</a> : <b>Zone D - Tool</b>	Stories / CPR: <b>15-20 / No</b>
Parking: <b>Guest, Open - 1, Secured Entry, Unassigned</b>	Frontage: <b>Other</b>	

[Zoning](#): **12 - A-2 Medium Density Apartme**

View: **Coastline, Mountain, Ocean, Sunrise**

**Public Remarks:** Pristine, beautifully maintained 10th floor unit in desirable Makaha Valley Towers, with its resort-style living and spacious units. Floor to ceiling sliding doors show off the spectacular million-dollar views, and this desirable model has the living room facing the ocean. Pretty design touches and colors make for a lovely living space. Central AC keeps you cool year around. All furniture included! Island furniture, lamps, linens, silverware and accessories invite you home to the tropics. Just drop your suitcases and go. Great location near elevator and laundry area. Maintenance fees include everything-- Electricity, AC, water, sewer, trash and basic cable. Amenities include BBQ and picnic areas, heated pool, lounge chairs, 24X7 security, on-site management office. **Sale Conditions:** None **Schools:** , , \* [Request Showing](#), [Photos](#), [History](#), [Maps](#), [Deed](#), [Watch List](#), [Tax Info](#)



Address	Price	Bd & Bth	Living / Avg.	Land   Avg.	Lanai	Occ.	FL	DOM
<a href="#">84-680 Kili Drive 1007</a>	<a href="#">\$199,000</a>	1 & 1/0	680   \$293	0   \$inf	60	32%	10	29

Address	Tax   Maint.   Ass.	Assessed Land	Assessed Building	Assessed Total	Ratio	Year & Remodeled
<a href="#">84-680 Kili Drive 1007</a>	\$53   \$843   \$0	\$31,600	\$148,300	\$179,900	111%	1970 & NA

Address	Sold Price	Sold Date	Sold Ratio	Original Ratio	Sold Terms
<a href="#">84-680 Kili Drive 1007</a>	\$190,000	04-30-2021	95%	95%	Cash

[84-680 Kili Drive 1007](#) - MLS#: [202104392](#) - Pristine, beautifully maintained 10th floor unit in desirable Makaha Valley Towers, with its resort-style living and spacious units. Floor to ceiling sliding doors show off the spectacular million-dollar views, and this desirable model has the living room facing the ocean. Pretty design touches and colors make for a lovely living space. Central AC keeps you cool year around. All furniture included! Island furniture, lamps, linens, silverware and accessories invite you home to the tropics. Just drop your suitcases and go. Great location near elevator and laundry area. Maintenance fees include everything--Electricity, AC, water, sewer, trash and basic cable. Amenities include BBQ and picnic areas, heated pool, lounge chairs, 24X7 security, on-site management office. **Region:** Leeward **Neighborhood:** Makaha **Condition:** Above Average **Parking:** Guest, Open - 1, Secured Entry, Unassigned **Total Parking:** 1 **View:** Coastline, Mountain, Ocean, Sunrise **Frontage:** Other **Pool:** **Zoning:** 12 - A-2 Medium Density Apartme **Sale Conditions:** None **Schools:** , , \* [Request Showing](#), [Photos](#), [History](#), [Maps](#), [Deed](#), [Watch List](#), [Tax Info](#)

DOM = Days on Market, Occ. = Occupancy, FL = Floor Number