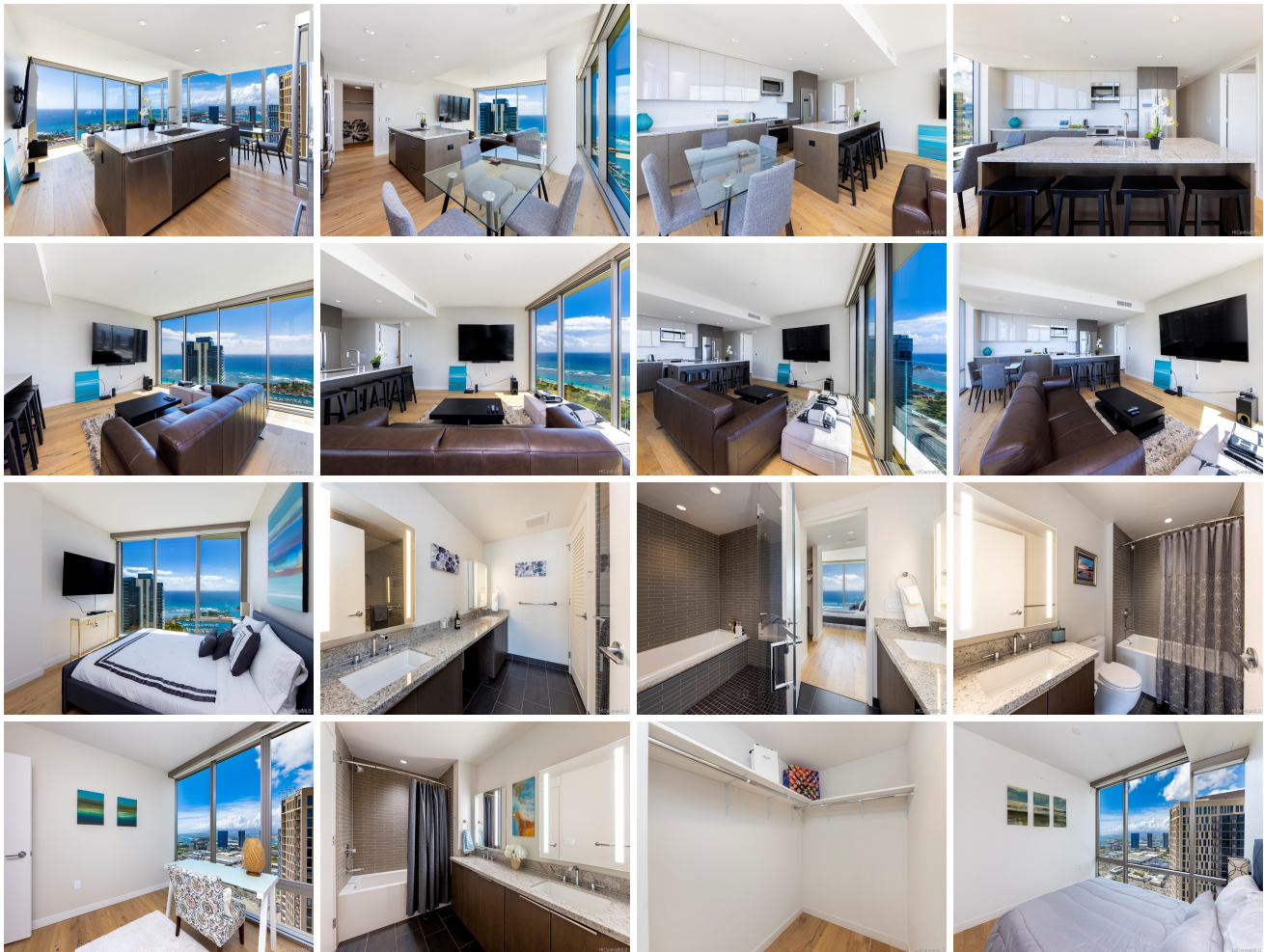


**Ae'o 1001 Queen Street Unit 3701, Honolulu 96814 \* Ae'o \* \$2,000,000 \* Originally \$2,300,000**

|   |  |                                |
|---|--|--------------------------------|
| Sold Price: \$1,800,000   | Sold Date: 08-03-2021                              | Sold Ratio: 90%                |
| Beds: <b>3</b>  | MLS#: <a href="#">202106907</a> , FS               | Year Built: <b>2018</b>        |
| Bath: <b>3/0</b>  | Status: <b>Sold</b>                                | Remodeled:                     |
| Living Sq. Ft.: <b>1,329</b>  | List Date & DOM: <b>03-12-2021</b> & <b>102</b>    | Total Parking: <b>2</b>        |
| Land Sq. Ft.: <b>0</b>  | Condition: <b>Excellent</b>                        | <a href="#">Assessed Value</a> |
| Lanai Sq. Ft.: <b>0</b>   | Frontage:  | Building: <b>\$1,642,200</b>   |
| Sq. Ft. Other: <b>0</b>   | Tax/Year: <b>\$1,063/2021</b>                      | Land: <b>\$87,200</b>          |
| Total Sq. Ft. <b>1,329</b>  | Neighborhood: <b>Kakaako</b>                       | Total: <b>\$1,729,400</b>      |
| Maint./Assoc. <b>\$1,254 / \$26</b>   | <a href="#">Flood Zone</a> : <b>Zone AE - Tool</b> | Stories / CPR: <b>21+ / No</b> |
| Parking: <b>Assigned, Covered - 2, Guest, Secured Entry</b>                 | Frontage:  |                                |
| <a href="#">Zoning</a> : <b>Kak - Kakaako Community Development Project</b> | View: <b>City, Ocean, Sunset</b>                   |                                |

**Public Remarks:** Back on the market! Capture one of Kaka'ako's finest luxury destinations at Ae'o #3701, a high-floor front-corner unit located in Honolulu's Ward Village. Picturesque Pacific Ocean panoramas stretch east to west with 270-degree Ocean, Coastline, and Mountain views from the main living area's wrap-around floor-to-ceiling glass. The 3 bedroom, 3 bath floor plan includes two master suites featuring walk-in closets and double vanity resort-style bathrooms, plus a third bedroom, all featuring ocean views. Resort-style amenities await, including a movie theater, kid's playroom, formal kitchen and dining spaces, and a unique rooftop sky terrace. Centrally located, adjacent to Whole Foods, nearby Movie Theaters, sandy Ala Moana Beach Park, shops, restaurants, and more, welcome home to paradise, found at Ae'o #3701! **Sale Conditions:** None  
**Schools:** [Kaahumanu](#), [Washington](#), [Mckinley](#) \* [Request Showing](#), [Photos](#), [History](#), [Maps](#), [Deed](#), [Watch List](#), [Tax Info](#)





| Address                                | Price              | Bd & Bth | Living / Avg.   | Land   Avg. | Lanai | Occ. | FL | DOM |
|--|--------------------|----------|-----------------|-------------|-------|------|----|-----|
| <a href="#">1001 Queen Street 3701</a> | <b>\$2,000,000</b> | 3 & 3/0  | 1,329   \$1,505 | 0   \$inf   | 0     | 63%  | 37 | 102 |

| Address                                | Tax   Maint.   Ass.      | Assessed Land | Assessed Building | Assessed Total | Ratio | Year & Remodeled |
|--|--------------------------|---------------|-------------------|----------------|-------|------------------|
| <a href="#">1001 Queen Street 3701</a> | \$1,063   \$1,254   \$26 | \$87,200      | \$1,642,200       | \$1,729,400    | 116%  | 2018 & NA        |

| Address                                | Sold Price  | Sold Date  | Sold Ratio | Original Ratio | Sold Terms |
|--|-------------|------------|------------|----------------|------------|
| <a href="#">1001 Queen Street 3701</a> | \$1,800,000 | 08-03-2021 | 90%        | 78%            | Cash       |

[1001 Queen Street 3701](#) - MLS#: [202106907](#) - Original price was \$2,300,000 - Back on the market! Capture one of Kaka'ako's finest luxury destinations at Ae'o #3701, a high-floor front-corner unit located in Honolulu's Ward Village. Picturesque Pacific Ocean panoramas stretch east to west with 270-degree Ocean, Coastline, and Mountain views from the main living area's wrap-around floor-to-ceiling glass. The 3 bedroom, 3 bath floor plan includes two master suites featuring walk-in closets and double vanity resort-style bathrooms, plus a third bedroom, all featuring ocean views. Resort-style amenities await, including a movie theater, kid's playroom, formal kitchen and dining spaces, and a unique rooftop sky terrace. Centrally located, adjacent to Whole Foods, nearby Movie Theaters, sandy Ala Moana Beach Park, shops, restaurants, and more, welcome home to paradise, found at Ae'o #3701! **Region:** Metro **Neighborhood:** Kakaako **Condition:** Excellent **Parking:** Assigned, Covered - 2, Guest, Secured Entry **Total Parking:** 2 **View:** City, Ocean, Sunset **Frontage:** Pool: **Zoning:** Kak - Kakaako Community Development Project **Sale Conditions:** None **Schools:** [Kaahumanu](#), [Washington](#), [Mckinley](#) \* [Request Showing](#), [Photos](#), [History](#), [Maps](#), [Deed](#), [Watch List](#), [Tax Info](#)

DOM = Days on Market, Occ. = Occupancy, FL = Floor Number