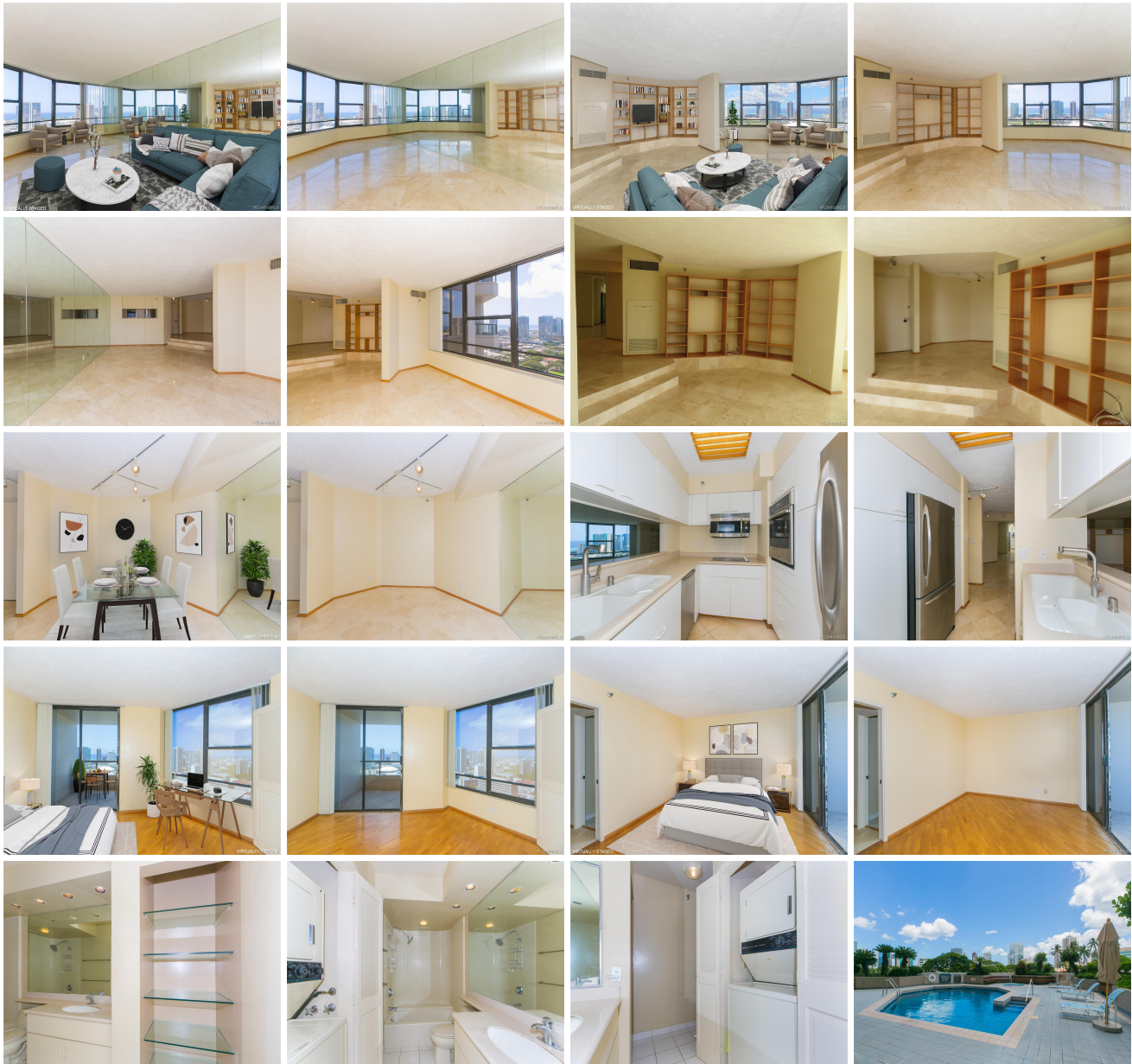


Admiral Thomas Apts 1221 Victoria Street Unit 3203, Honolulu 96814 * Admiral Thomas Apts * \$199,900 * Originally \$209,900

Sold Price: \$195,000	Sold Date: 07-02-2021	Sold Ratio: 98%
Beds: 1	MLS#: 202108164 , LH	Year Built: 1980
Bath: 1/0	Status: Sold	Remodeled:
Living Sq. Ft.: 1,020	List Date & DOM: 04-01-2021 & 61	Total Parking: 2
Land Sq. Ft.: 90,126	Condition: Average	Assessed Value
Lanai Sq. Ft.: 130	Frontage: Other	Building: \$470,900
Sq. Ft. Other: 0	Tax/Year: \$81/2021	Land: \$66,200
Total Sq. Ft. 1,150	Neighborhood: Makiki Area	Total: \$537,100
Maint./Assoc. \$1,107 / \$0	Flood Zone : Zone X - Tool	Stories / CPR: 21+ / No
Parking: Covered - 2	Frontage: Other	
Zoning : 12 - A-2 Medium Density Apartme	View: City, Coastline, Ocean, Sunset	

Public Remarks: Located within walking distance to an expansive Thomas Square Park, The historic stone architecture of the Honolulu Museum of Arts, the Neal Blaisdell Arena and Concert Hall. Also Nearby are Straub Clinic and Queens Medical Center. The Luxury, Admiral Thomas condominium offers fine amenities and large floor plans. It is situated on a large 2 acre parcel of land with a church and beautiful gardens. Air conditioning is Central, private Security, 16 guest parking stalls and a host of amenities. All units are leasehold with the lease expiring in 2046. It would be difficult to find a condominium surrounded by a more impressive surroundings. The Ward Centers and the Ala Moana Shopping Center are within minutes away. Work downtown? Its just a few minutes away as well. and on the busline. **Sale Conditions:** Lender Sale **Schools:** [Kaahumanu](#), [Stevenson](#), [Mckinley](#) * [Request Showing](#), [Photos](#), [History](#), [Maps](#), [Deed](#), [Watch List](#), [Tax Info](#)





Address	Price	Bd & Bth	Living / Avg.	Land Avg.	Lanai	Occ.	FL	DOM
1221 Victoria Street 3203	\$199,900 LH	1 & 1/0	1,020 \$196	90,126 \$2	130	63%	32	61

Address	Tax Maint. Ass.	Assessed Land	Assessed Building	Assessed Total	Ratio	Year & Remodeled
1221 Victoria Street 3203	\$81 \$1,107 \$0	\$66,200	\$470,900	\$537,100	37%	1980 & NA

Address	Sold Price	Sold Date	Sold Ratio	Original Ratio	Sold Terms
1221 Victoria Street 3203	\$195,000	07-02-2021	98%	93%	Cash

[1221 Victoria Street 3203](#) - MLS#: [202108164](#) - Original price was \$209,900 - Located within walking distance to an expansive Thomas Square Park, The historic stone architecture of the Honolulu Museum of Arts, the Neal Blaisdell Arena and Concert Hall. Also Nearby are Straub Clinic and Queens Medical Center. The Luxury, Admiral Thomas condominium offers fine amenities and large floor plans. It is situated on a large 2 acre parcel of land with a church and beautiful gardens. Air conditioning is Central, private Security, 16 guest parking stalls and a host of amenities. All units are leasehold with the lease expiring in 2046. It would be difficult to find a condominium surrounded by a more impressive surroundings. The Ward Centers and the Ala Moana Shopping Center are within minutes away. Work downtown? Its just a few minutes away as well. and on the busline. **Region:** Metro **Neighborhood:** Makiki Area **Condition:** Average **Parking:** Covered - 2 **Total Parking:** 2 **View:** City, Coastline, Ocean, Sunset **Frontage:** Other **Pool:** **Zoning:** 12 - A-2 Medium Density Apartme **Sale Conditions:** Lender Sale **Schools:** [Kaahumanu](#), [Stevenson](#), [Mckinley](#) * [Request Showing](#), [Photos](#), [History](#), [Maps](#), [Deed](#), [Watch List](#), [Tax Info](#)

DOM = Days on Market, Occ. = Occupancy, FL = Floor Number