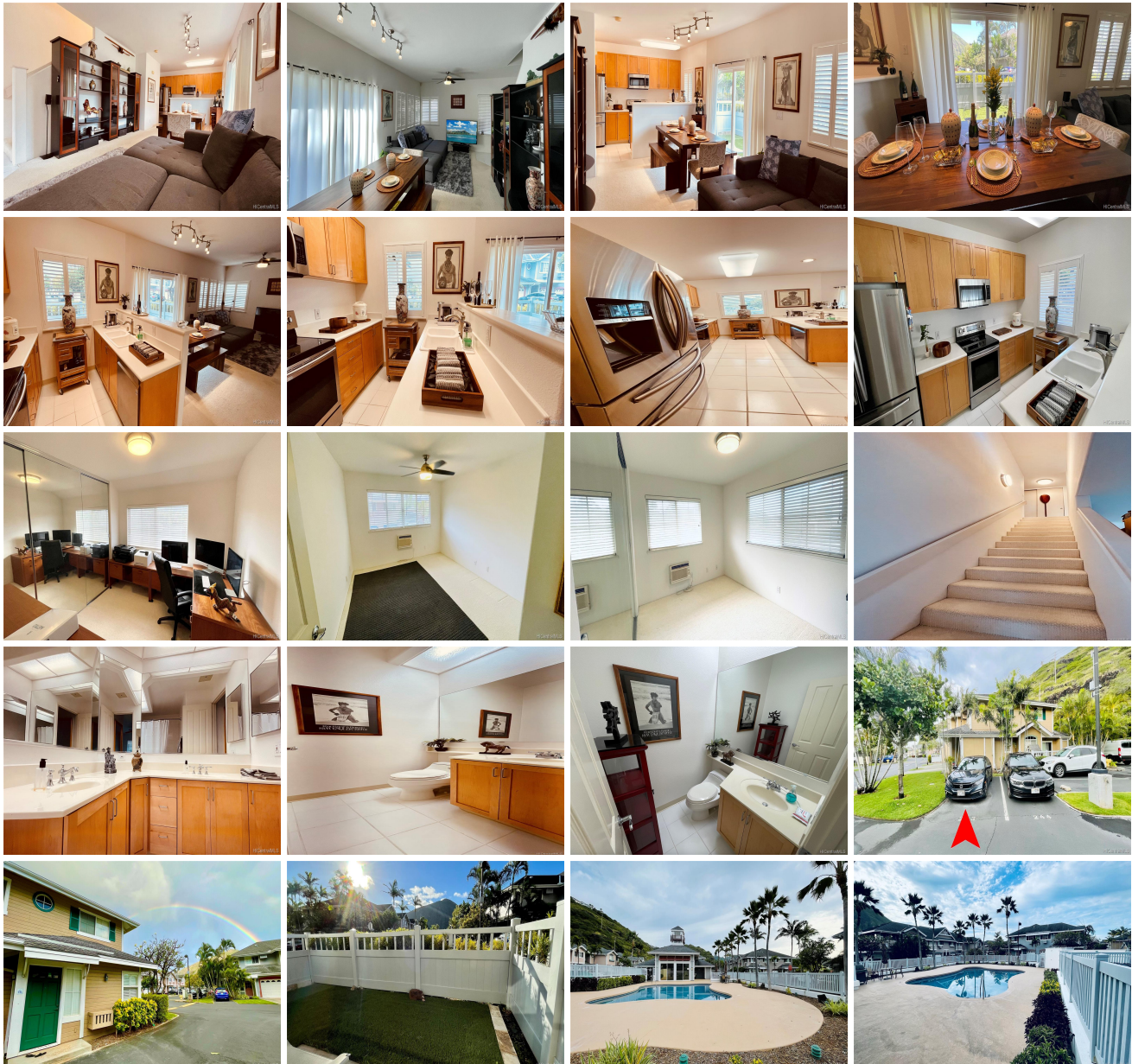


LALEA AT HAWAII KAI III 7170 Hawaii Kai Drive Unit 176, Honolulu 96825 * LALEA AT HAWAII KAI III * \$740,000

Sold Price: \$783,000	Sold Date: 06-04-2021	Sold Ratio: 106%
Beds: 3	MLS#: <u>202108825</u> , FS	Year Built: 1998
Bath: 2/1	Status: Sold	Remodeled:
Living Sq. Ft.: 1,113	List Date & DOM: 04-14-2021 & 9	Total Parking: 2
Land Sq. Ft.: 0	Condition: Above Average	Assessed Value
Lanai Sq. Ft.: 300	Frontage:	Building: \$290,800
Sq. Ft. Other: 0	Tax/Year: \$216/2021	Land: \$450,300
Total Sq. Ft. 1,413	Neighborhood: West Marina	Total: \$741,100
Maint./Assoc. \$446 / \$0	Flood Zone : Zone D - Tool	Stories / CPR: / No
Parking: Covered - 1, Garage, Guest, Open - 1	Frontage:	
Zoning : 12 - A-2 Medium Density Apartme	View: Mountain	

Public Remarks: Amazing value at an affordable price, this RARELY available 3 bd 2.5 ba Townhouse is in the sweet spot of Lalea, away from the mountains and the noise of Hawaii Kai Drive! Conveniently located it is minutes away from world renowned restaurants, Costco, City Mill, famous hikes and beautiful beaches. This corner end unit provides ample air flow so you feel cool trade winds on a hot summer day. Impress your friends with a BBQ at the private clubhouse and take a dip in the tiled pool. You'll appreciate the indoor/outdoor feel and fenced-in yard with a beautiful view of iconic Koko head. Lalea is one of the most sought-after townhome complexes in East Honolulu that provides a warm single family home feel with low maintenance fees. Get it before it's gone as this won't last long! **Sale Conditions:** None **Schools:** [Hahaione](#), [Niu Valley](#), [Kaiser](#) * [Request Showing](#), [Photos](#), [History](#), [Maps](#), [Deed](#), [Watch List](#), [Tax Info](#)





Address	Price	Bd & Bth	Living / Avg.	Land Avg.	Lanai	Occ.	FL	DOM
7170 Hawaii Kai Drive 176	\$740,000	3 & 2/1	1,113 \$665	0 \$inf	300	69%	1	9

Address	Tax Maint. Ass.	Assessed Land	Assessed Building	Assessed Total	Ratio	Year & Remodeled
7170 Hawaii Kai Drive 176	\$216 \$446 \$0	\$450,300	\$290,800	\$741,100	100%	1998 & NA

Address	Sold Price	Sold Date	Sold Ratio	Original Ratio	Sold Terms
7170 Hawaii Kai Drive 176	\$783,000	06-04-2021	106%	106%	Conventional

[7170 Hawaii Kai Drive 176](#) - MLS#: [202108825](#) - Amazing value at an affordable price, this RARELY available 3 bd 2.5 ba Townhouse is in the sweet spot of Laea, away from the mountains and the noise of Hawaii Kai Drive! Conveniently located it is minutes away from world renowned restaurants, Costco, City Mill, famous hikes and beautiful beaches. This corner end unit provides ample air flow so you feel cool trade winds on a hot summer day. Impress your friends with a BBQ at the private clubhouse and take a dip in the tiled pool. You'll appreciate the indoor/outdoor feel and fenced-in yard with a beautiful view of iconic Koko head. Laea is one of the most sought-after townhome complexes in East Honolulu that provides a warm single family home feel with low maintenance fees. Get it before it's gone as this won't last long! **Region:** Hawaii Kai **Neighborhood:** West Marina **Condition:** Above Average **Parking:** Covered - 1, Garage, Guest, Open - 1 **Total Parking:** 2 **View:** Mountain **Frontage:** Pool: **Zoning:** 12 - A-2 Medium Density Apartme **Sale Conditions:** None **Schools:** [Hahaione](#), [Niu Valley](#), [Kaiser](#) * [Request Showing](#), [Photos](#), [History](#), [Maps](#), [Deed](#), [Watch List](#), [Tax Info](#)

DOM = Days on Market, Occ. = Occupancy, FL = Floor Number