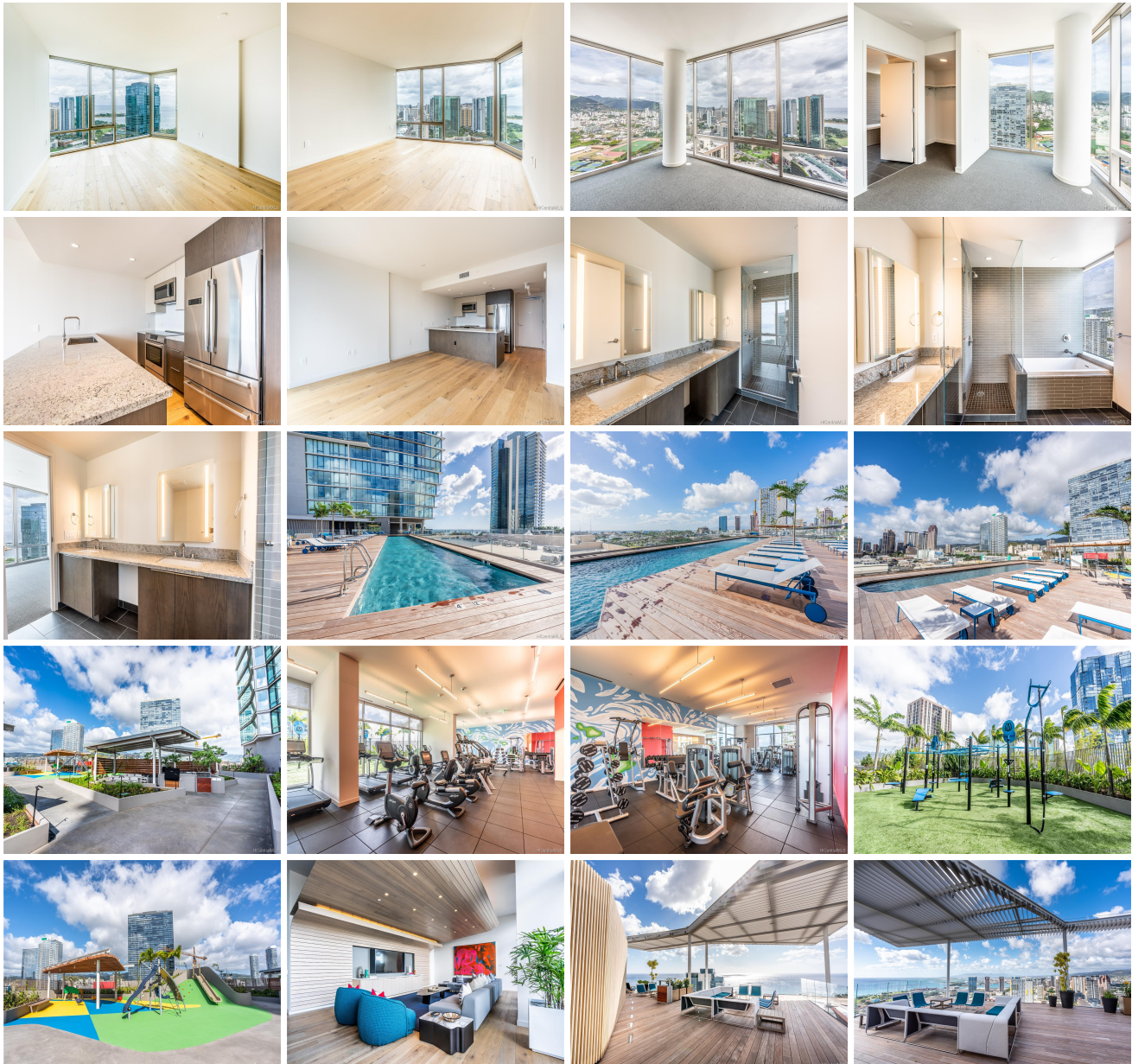


Ae'o 1001 Queen Street Unit 3312, Honolulu 96814 * Ae'o * \$1,340,000

Beds: 2	MLS#: 202109883, FS	Year Built: 2018
Bath: 2/0	Status: Cancelled	Remodeled:
Living Sq. Ft.: 937	List Date & DOM: 05-07-2021 & 175	Total Parking: 2
Land Sq. Ft.: 0	Condition: Excellent	Assessed Value
Lanai Sq. Ft.: 0	Frontage: Other	Building: \$1,147,500
Sq. Ft. Other: 0	Tax/Year: \$478/2021	Land: \$61,600
Total Sq. Ft. 937	Neighborhood: Kakaako	Total: \$1,209,100
Maint./Assoc. \$886 / \$0	Flood Zone : Zone AE - Tool	Stories / CPR: 21+ / No
Parking: Assigned, Covered - 2, Garage, Guest, Secured Entry, Tandem	Frontage: Other	
Zoning : Kak - Kakaako Community Development Project	View: City, Mountain, Ocean	

Public Remarks: This beautiful Diamond Head corner unit has a floor-to-ceiling glass bay wing towards the ocean. This corner residence also brings the cool of the mountains and amazing ocean views to your bedroom to living room. Unit includes engineered hardwood flooring, stainless steel Bosch appliances, Central A/C, and more! AE'O offers resort-style amenities: Ocean view lap pool and family pool, spa, impressive fitness center with outdoor workout spaces, playground, private theater, guest suites, concierge, rooftop terrace with Beautiful panoramic ocean Views and so much more. Residents conveniently have direct and covered access to Whole Foods Market, Straub medical clinic and Ward Village's many shops & eateries. Storage #S4-45 is also included. **Sale Conditions:** None **Schools:** [Kaahumanu](#), [Washington](#), [Mckinley](#) * [Request Showing](#), [Photos](#), [History](#), [Maps](#), [Deed](#), [Watch List](#), [Tax Info](#)





Address	Price	Bd & Bth	Living / Avg.	Land Avg.	Lanai	Occ.	FL	DOM
1001 Queen Street 3312	\$1,340,000	2 & 2/0	937 \$1,430	0 \$inf	0	0%	33	175

Address	Tax Maint. Ass.	Assessed Land	Assessed Building	Assessed Total	Ratio	Year & Remodeled
1001 Queen Street 3312	\$478 \$886 \$0	\$61,600	\$1,147,500	\$1,209,100	111%	2018 & NA

[1001 Queen Street 3312](#) - MLS#: [202109883](#) - This beautiful Diamond Head corner unit has a floor-to-ceiling glass bay wing towards the ocean. This corner residence also brings the cool of the mountains and amazing ocean views to your bedroom to living room. Unit includes engineered hardwood flooring, stainless steel Bosch appliances, Central A/C, and more! AE'O offers resort-style amenities: Ocean view lap pool and family pool, spa, impressive fitness center with outdoor workout spaces, playground, private theater, guest suites, concierge, rooftop terrace with Beautiful panoramic ocean Views and so much more. Residents conveniently have direct and covered access to Whole Foods Market, Straub medical clinic and Ward Village's many shops & eateries. Storage #S4-45 is also included. **Region:** Metro **Neighborhood:** Kakaako **Condition:** Excellent **Parking:** Assigned, Covered - 2, Garage, Guest, Secured Entry, Tandem **Total Parking:** 2 **View:** City, Mountain, Ocean **Frontage:** Other **Pool:** Zoning: Kak - Kakaako Community Development Project **Sale Conditions:** None **Schools:** [Kaahumanu](#), [Washington](#), [Mckinley](#) * [Request Showing](#), [Photos](#), [History](#), [Maps](#), [Deed](#), [Watch List](#), [Tax Info](#)

DOM = Days on Market, Occ. = Occupancy, FL = Floor Number