

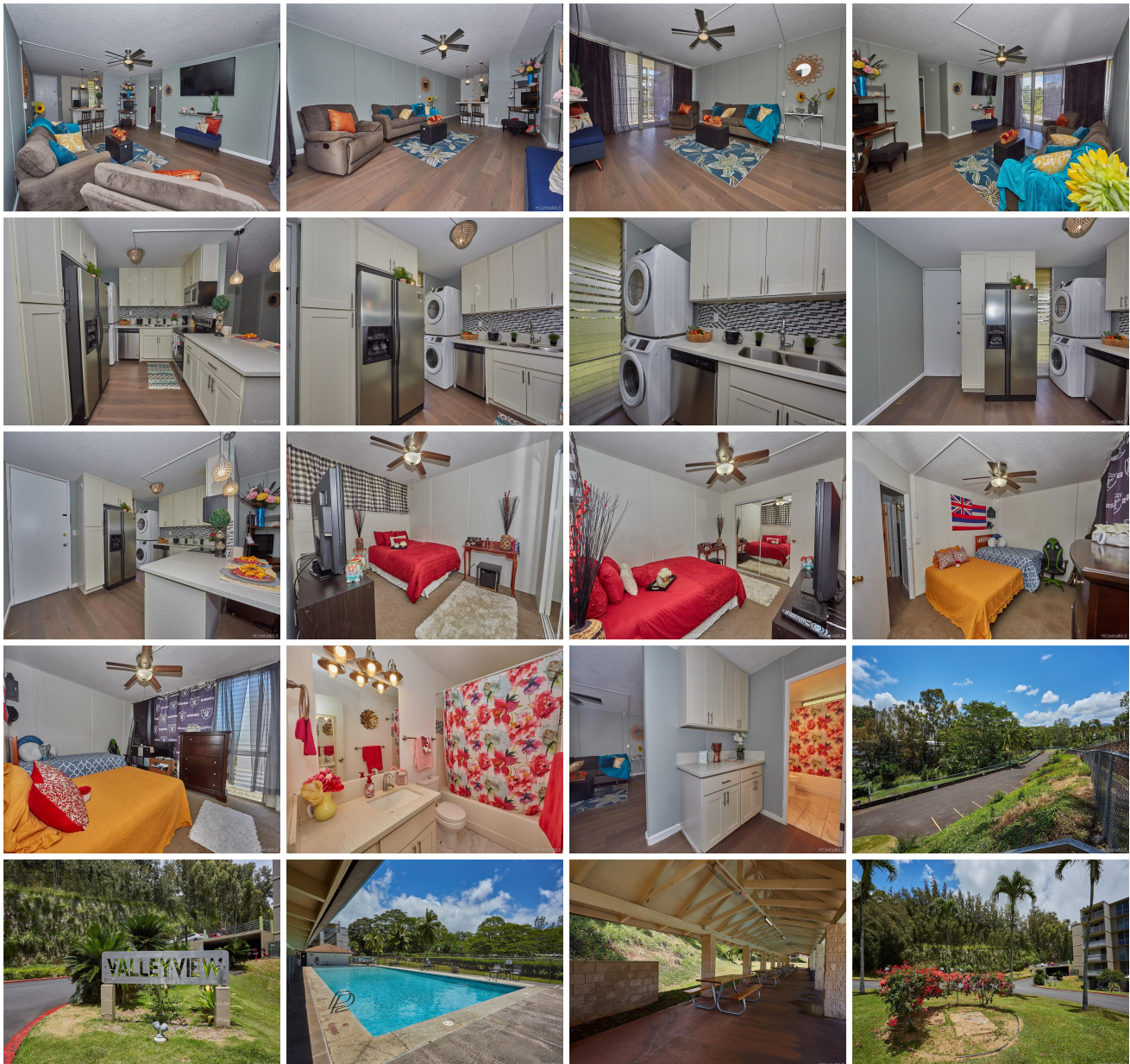
**Valleyview Melemanu 95-2043 Waikalani Place Unit A406, Mililani 96789 \* Valleyview**

**Melemanu \* \$335,000**

Sold Price: \$345,000	Sold Date: 06-16-2021	Sold Ratio: 103%
Beds: <b>2</b>	MLS#: <b><u>202110111</u></b> , FS	Year Built: <b>1973</b>
Bath: <b>1/0</b>	Status: <b>Sold</b>	Remodeled:
Living Sq. Ft.: <b>799</b>	List Date & DOM: <b>04-28-2021 &amp; 13</b>	Total Parking: <b>2</b>
Land Sq. Ft.: <b>175,024</b>	Condition: <b>Above Average</b>	<a href="#">Assessed Value</a>
Lanai Sq. Ft.: <b>97</b>	Frontage: <b>Other</b>	Building: <b>\$191,600</b>
Sq. Ft. Other: <b>0</b>	Tax/Year: <b>\$49/2020</b>	Land: <b>\$96,000</b>
	<b>Waipio Acres-</b>	
Total Sq. Ft. <b>896</b>	Neighborhood: <b>waikalani</b>	Total: <b>\$287,600</b>
	<b>Woodlands</b>	
Maint./Assoc. <b>\$659 / \$0</b>	<a href="#">Flood Zone</a> : <b>Zone D - Tool</b>	Stories / CPR: <b>4-7 / No</b>
Parking: <b>Assigned, Guest, Open - 2</b>	Frontage: <b>Other</b>	
<a href="#">Zoning</a> : <b>11 - A-1 Low Density Apartment</b>	View: <b>Garden</b>	

**Public Remarks:** Come and look at this quiet and cozy unit in Valleyview Melemanu. This unit has Corian countertops, along with stainless steel appliances and is move in ready. Located near Wheeler Army Air Base, Schofield Barracks, and very close to the freeway. Melemanu is seconds away from tons of shops and eateries. Parking stalls are conveniently on the same level as the unit so no walking up and down stairs. Come and see this great unit before its gone!! **Sale Conditions:** None

**Schools:** [Kipapa](#), [Mililani](#), [Mililani](#) \* [Request Showing](#), [Photos](#), [History](#), [Maps](#), [Deed](#), [Watch List](#), [Tax Info](#)





Address	Price	Bd & Bth	Living / Avg.	Land   Avg.	Lanai	Occ.	FL	DOM
<a href="#">95-2043 Waikalani Place A406</a>	<a href="#">\$335,000</a>	2 & 1/0	799   \$419	175,024   \$2	97	43%	3	13

Address	Tax   Maint.   Ass.	Assessed Land	Assessed Building	Assessed Total	Ratio	Year & Remodeled
<a href="#">95-2043 Waikalani Place A406</a>	\$49   \$659   \$0	\$96,000	\$191,600	\$287,600	116%	1973 & NA

Address	Sold Price	Sold Date	Sold Ratio	Original Ratio	Sold Terms
<a href="#">95-2043 Waikalani Place A406</a>	\$345,000	06-16-2021	103%	103%	VA

<a href="#">95-2043 Waikalani Place A406</a> - MLS#: <a href="#">202110111</a> - Come and look at this quiet and cozy unit in Valleyview Melemanu. This unit has Corian countertops, along with stainless steel appliances and is move in ready. Located near Wheeler Army Air Base, Schofield Barracks, and very close to the freeway. Melemanu is seconds away from tons of shops and eateries. Parking stalls are conveniently on the same level as the unit so no walking up and down stairs. Come and see this great unit before its gone!! <b>Region:</b> Central <b>Neighborhood:</b> Waipio Acres-waikalani Woodlands <b>Condition:</b> Above Average <b>Parking:</b> Assigned, Guest, Open - 2 <b>Total Parking:</b> 2 <b>View:</b> Garden <b>Frontage:</b> Other <b>Pool:</b> <b>Zoning:</b> 11 - A-1 Low Density Apartment <b>Sale Conditions:</b> None <b>Schools:</b> <a href="#">Kipapa</a> , <a href="#">Mililani</a> , <a href="#">Mililani</a> * <a href="#">Request Showing</a> , <a href="#">Photos</a> , <a href="#">History</a> , <a href="#">Maps</a> , <a href="#">Deed</a> , <a href="#">Watch List</a> , <a href="#">Tax Info</a>					
--	--	--	--	--	--

DOM = Days on Market, Occ. = Occupancy, FL = Floor Number