

Poha Kea Point 3 46-075 Meheanu Place Unit 3363, Kaneohe 96744 * Poha Kea Point 3 *

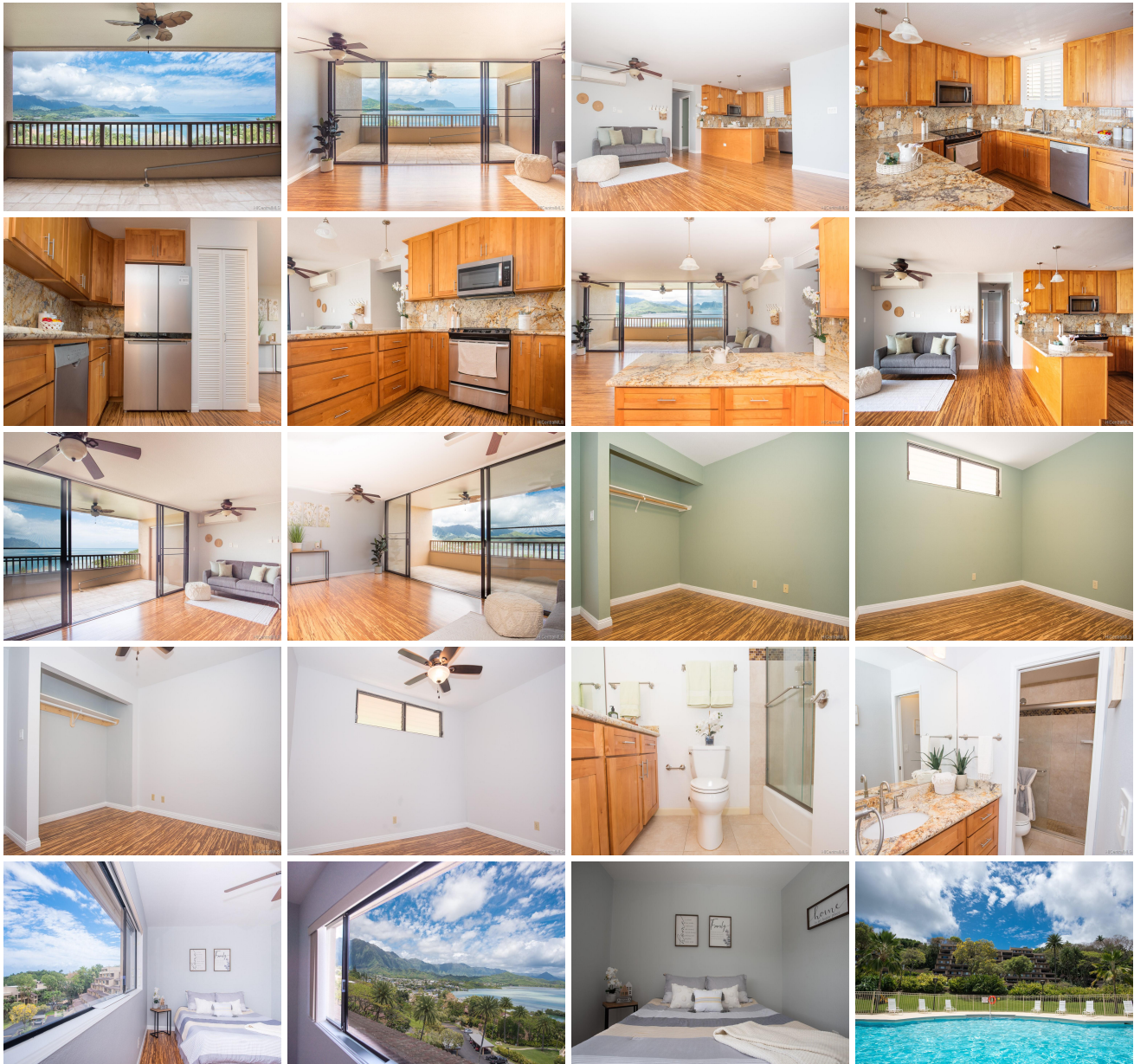
\$735,000

Sold Price: \$770,000	Sold Date: 06-09-2021	Sold Ratio: 105%
Beds: 3	MLS#: <u>202110126, FS</u>	Year Built: 1989
Bath: 2/0	Status: Sold	Remodeled:
Living Sq. Ft.: 1,093	List Date & DOM: 04-28-2021 & 5	Total Parking: 2
Land Sq. Ft.: 0	Condition: Above Average, Excellent	Assessed Value
Lanai Sq. Ft.: 165	Frontage:	Building: \$399,700
Sq. Ft. Other: 0	Tax/Year: \$171/2021	Land: \$308,000
Total Sq. Ft. 1,258	Neighborhood: Lilipuna	Total: \$707,900
Maint./Assoc. \$466 / \$496	Flood Zone : Zone X - Tool	Stories / CPR: / No
Parking: Assigned, Carport, Covered - 1, Guest, Open - 1	Frontage:	

[Zoning](#): **03 - R10 - Residential District**

View: **Coastline, Marina/Canal, Ocean**

Public Remarks: This is a MUST SEE!! Stunning and spectacular, panoramic views from the best positioned unit in the entire complex. This fully upgraded 3 bedroom, 2 full bath, 1,093 sqft single-level condo includes a large covered lanai, 2 parking stalls, split AC and a brand new top-of-the-line refrigerator. Poha Kea Point has resort-like amenities including 3 swimming pools, hot tub, community BBQ, tennis courts, sauna, security, walking paths, and ample guest parking. Conveniently located with easy access to Kamehameha Hwy/H-3/Likelike/Pali Hwy, MCBH, Windward Mall & lots of shopping and restaurants, this pet-friendly (pls verify), VA approved complex checks almost every box. Schedule a showing today, you won't be disappointed. **Sale Conditions:** None **Schools:** , , * [Request Showing](#), [Photos](#), [History](#), [Maps](#), [Deed](#), [Watch List](#), [Tax Info](#)





Address	Price	Bd & Bth	Living / Avg.	Land Avg.	Lanai	Occ.	FL	DOM
46-075 Meheanu Place 3363	\$735,000	3 & 2/0	1,093 \$672	0 \$inf	165	58%	3	5

Address	Tax Maint. Ass.	Assessed Land	Assessed Building	Assessed Total	Ratio	Year & Remodeled
46-075 Meheanu Place 3363	\$171 \$466 \$496	\$308,000	\$399,700	\$707,900	104%	1989 & NA

Address	Sold Price	Sold Date	Sold Ratio	Original Ratio	Sold Terms
46-075 Meheanu Place 3363	\$770,000	06-09-2021	105%	105%	Conventional

[46-075 Meheanu Place 3363](#) - MLS#: [202110126](#) - This is a MUST SEE!! Stunning and spectacular, panoramic views from the best positioned unit in the entire complex. This fully upgraded 3 bedroom, 2 full bath, 1,093 sqft single-level condo includes a large covered lanai, 2 parking stalls, split AC and a brand new top-of-the-line refrigerator. Poha Kea Point has resort-like amenities including 3 swimming pools, hot tub, community BBQ, tennis courts, sauna, security, walking paths, and ample guest parking. Conveniently located with easy access to Kamehameha Hwy/H-3/Likelike/Pali Hwy, MCBH, Windward Mall & lots of shopping and restaurants, this pet-friendly (pls verify), VA approved complex checks almost every box. Schedule a showing today, you won't be disappointed. **Region:** Kaneohe **Neighborhood:** Lilipuna **Condition:** Above Average, Excellent **Parking:** Assigned, Carport, Covered - 1, Guest, Open - 1 **Total Parking:** 2 **View:** Coastline, Marina/Canal, Ocean **Frontage:** Pool: **Zoning:** 03 - R10 - Residential District **Sale Conditions:** None **Schools:** , , * [Request Showing](#), [Photos](#), [History](#), [Maps](#), [Deed](#), [Watch List](#), [Tax Info](#)

DOM = Days on Market, Occ. = Occupancy, FL = Floor Number