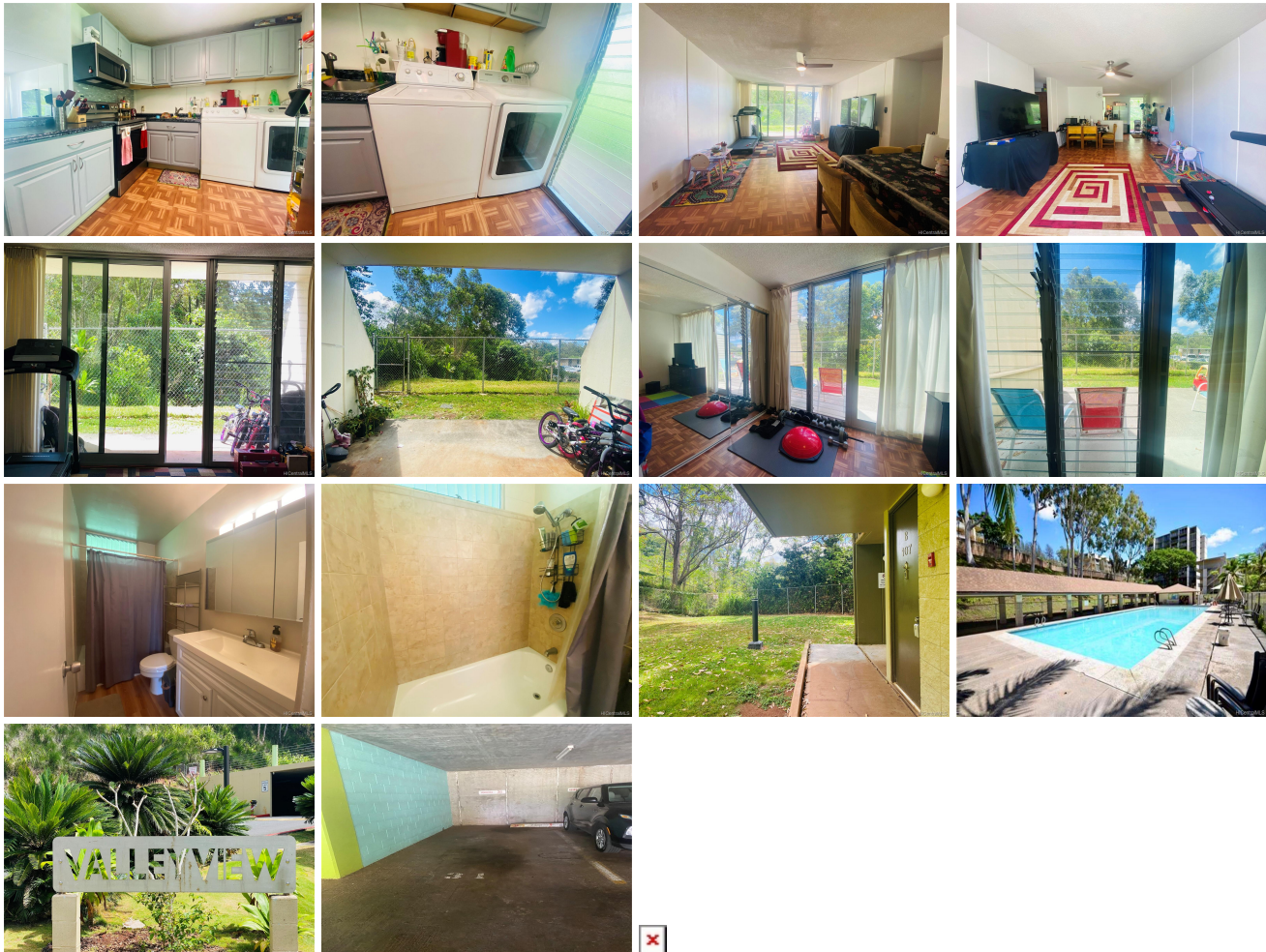


# Valleyview Melemanu 95-2055 Waikalani Place Unit B107, Mililani 96789 \* Valleyview

## Melemanu \* \$340,000

Sold Price: \$350,000	Sold Date: 06-30-2021	Sold Ratio: 103%
Beds: <b>2</b>	MLS#: <b>202112115, FS</b>	Year Built: <b>1973</b>
Bath: <b>1/0</b>	Status: <b>Sold</b>	Remodeled:
Living Sq. Ft.: <b>799</b>	List Date & DOM: <b>05-14-2021 &amp; 5</b>	Total Parking: <b>2</b>
Land Sq. Ft.: <b>0</b>	Condition: <b>Above Average</b>	<a href="#">Assessed Value</a>
Lanai Sq. Ft.: <b>97</b>	Frontage:	Building: <b>\$170,800</b>
Sq. Ft. Other: <b>0</b>	Tax/Year: <b>\$81/2020</b>	Land: <b>\$107,900</b>
Total Sq. Ft. <b>896</b>	Neighborhood: <b>Waipio Acres-waikalani Woodlands</b>	Total: <b>\$278,700</b>
Maint./Assoc. <b>\$660 / \$0</b>	<a href="#">Flood Zone</a> : <b>Zone D - Tool</b>	Stories / CPR: <b>One / No</b>
Parking: <b>Covered - 2</b>	Frontage:	
<a href="#">Zoning</a> : <b>11 - A-1 Low Density Apartment</b>	View: <b>Garden</b>	

**Public Remarks:** Move-In Ready, corner/end unit in Valleyview Melemanu! Unit includes updated sliding lanai doors and windows. Stove & Refrigerator updated in 2018 and new bathroom vanity 2019. New mirror closets installed in 2020 in both bedrooms. Ground floor unit includes two patios from living room & bedroom. Home has private green space in the back with a large grassy area in front. Two covered parking stalls are located nearby. Conveniently located near H-2, North Shore, Schofield Barracks and Wheeler Army Airfield. **Sale Conditions:** None **Schools:** , , \* [Request Showing](#), [Photos](#), [History](#), [Maps](#), [Deed](#), [Watch List](#), [Tax Info](#)



Address	Price	Bd & Bth	Living / Avg.	Land   Avg.	Lanai	Occ.	FL	DOM
<a href="#">95-2055 Waikalani Place B107</a>	<a href="#">\$340,000</a>	2 & 1/0	799   \$426	0   \$inf	97	56%	1	5

Address	Tax   Maint.   Ass.	Assessed Land	Assessed Building	Assessed Total	Ratio	Year & Remodeled
<a href="#">95-2055 Waikalani Place B107</a>	\$81   \$660   \$0	\$107,900	\$170,800	\$278,700	122%	1973 & NA

Address	Sold Price	Sold Date	Sold Ratio	Original Ratio	Sold Terms
<a href="#">95-2055 Waikalani Place B107</a>	\$350,000	06-30-2021	103%	103%	VA

[95-2055 Waikalani Place B107](#) - MLS#: [202112115](#) - Move-In Ready, corner/end unit in Valleyview Melemanu! Unit includes updated sliding lanai doors and windows. Stove & Refrigerator updated in 2018 and new bathroom vanity 2019. New mirror closets installed in 2020 in both bedrooms. Ground floor unit includes two patios from living room & bedroom. Home has private green space in the back with a large grassy area in front. Two covered parking stalls are located nearby. Conveniently located near H-2, North Shore, Schofield Barracks and Wheeler Army Airfield. **Region:** Central **Neighborhood:** Waipio Acres-waikalani Woodlands **Condition:** Above Average **Parking:** Covered - 2 **Total Parking:** 2 **View:** Garden **Frontage:** **Pool:** **Zoning:** 11 - A-1 Low Density Apartment **Sale Conditions:** None **Schools:** , , \* [Request Showing](#), [Photos](#), [History](#), [Maps](#), [Deed](#), [Watch List](#), [Tax Info](#)

DOM = Days on Market, Occ. = Occupancy, FL = Floor Number