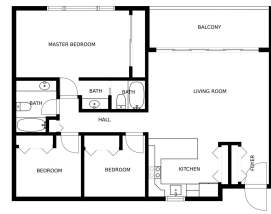


Poha Kea Point 4-4 46-035 Konohiki Street Unit 3854, Kaneohe 96744 * Poha Kea Point 4-4

*** \$749,000**

Sold Price: \$780,000	Sold Date: 08-30-2021	Sold Ratio: 104%
Beds: 3	MLS#: <u>202116542</u>, FS	Year Built: 1990
Bath: 2/0	Status: Sold	Remodeled: 2019
Living Sq. Ft.: 1,093	List Date & DOM: 06-30-2021 & 7	Total Parking: 2
Land Sq. Ft.: 108,072	Condition: Above Average	Assessed Value
Lanai Sq. Ft.: 165	Frontage:	Building: \$468,500
Sq. Ft. Other: 0	Tax/Year: \$164/2021	Land: \$195,400
Total Sq. Ft. 1,258	Neighborhood: Lilipuna	Total: \$663,900
Maint./Assoc. \$365 / \$496	Flood Zone : Zone X - Tool	Stories / CPR: One / No
Parking: Assigned, Covered - 1, Guest, Open - 1	Frontage:	
Zoning : 03 - R10 - Residential District	View: Coastline, Mountain, Ocean, Sunset	

Public Remarks: OH MY, THOSE VIEWS!! Beautifully renovated 3-bedroom, 2-bath, 2-parking condo in the Poha Kea community. Enjoy the upgrades (\$40,000 worth) in this single-level stunner with split A/C. Brand new luxury vinyl flooring throughout the kitchen and living area. High-end stainless steel appliances (2 yrs old), white shaker cabinets, and quartz countertops. Up to 2 pets allowed; no size or breed restrictions. 1 covered parking stall, and 1 uncovered stall. Park, walk 5 stalls to the right, climb 16 short (~5") steps, and you're at the front door. 3rd floor of 4 total. Make sure to have your agent give us 24 hours of notice for any showing requests so we can coordinate with the tenant. Tenant is vacating by the end of July. No open house planned. Maintenance fees are \$861.18/month. Easy access to H-3, Kaneohe, Kailua, and Marine Corps Base Hawaii. Act quickly on this one! **Sale Conditions:** None **Schools:** [Heeia](#), [King](#), [Castle](#) * [Request Showing](#), [Photos](#), [History](#), [Maps](#), [Deed](#), [Watch List](#), [Tax Info](#)



Address	Price	Bd & Bth	Living / Avg.	Land Avg.	Lanai	Occ.	FL	DOM
46-035 Konohiki Street 3854	\$749,000	3 & 2/0	1,093 \$685	108,072 \$7	165	52%	2	7

Address	Tax Maint. Ass.	Assessed Land	Assessed Building	Assessed Total	Ratio	Year & Remodeled
46-035 Konohiki Street 3854	\$164 \$365 \$496	\$195,400	\$468,500	\$663,900	113%	1990 & 2019

Address	Sold Price	Sold Date	Sold Ratio	Original Ratio	Sold Terms
46-035 Konohiki Street 3854	\$780,000	08-30-2021	104%	104%	Conventional

[46-035 Konohiki Street 3854](#) - MLS#: [202116542](#) - OH MY, THOSE VIEWS!! Beautifully renovated 3-bedroom, 2-bath, 2-parking condo in the Poha Kea community. Enjoy the upgrades (\$40,000 worth) in this single-level stunner with split A/C. Brand new luxury vinyl flooring throughout the kitchen and living area. High-end stainless steel appliances (2 yrs old), white shaker cabinets, and quartz countertops. Up to 2 pets allowed; no size or breed restrictions. 1 covered parking stall, and 1 uncovered stall. Park, walk 5 stalls to the right, climb 16 short (~5") steps, and you're at the front door. 3rd floor of 4 total. Make sure to have your agent give us 24 hours of notice for any showing requests so we can coordinate with the tenant. Tenant is vacating by the end of July. No open house planned. Maintenance fees are \$861.18/month. Easy access to H-3, Kaneohe, Kailua, and Marine Corps Base Hawaii. Act quickly on this one! **Region:** Kaneohe **Neighborhood:** Lilipuna **Condition:** Above Average **Parking:** Assigned, Covered - 1, Guest, Open - 1 **Total Parking:** 2 **View:** Coastline, Mountain, Ocean, Sunset **Frontage:** **Pool:** **Zoning:** 03 - R10 - Residential District **Sale Conditions:** None **Schools:** [Heeia](#), [King](#), [Castle](#) * [Request Showing](#), [Photos](#), [History](#), [Maps](#), [Deed](#), [Watch List](#), [Tax Info](#)

DOM = Days on Market, Occ. = Occupancy, FL = Floor Number