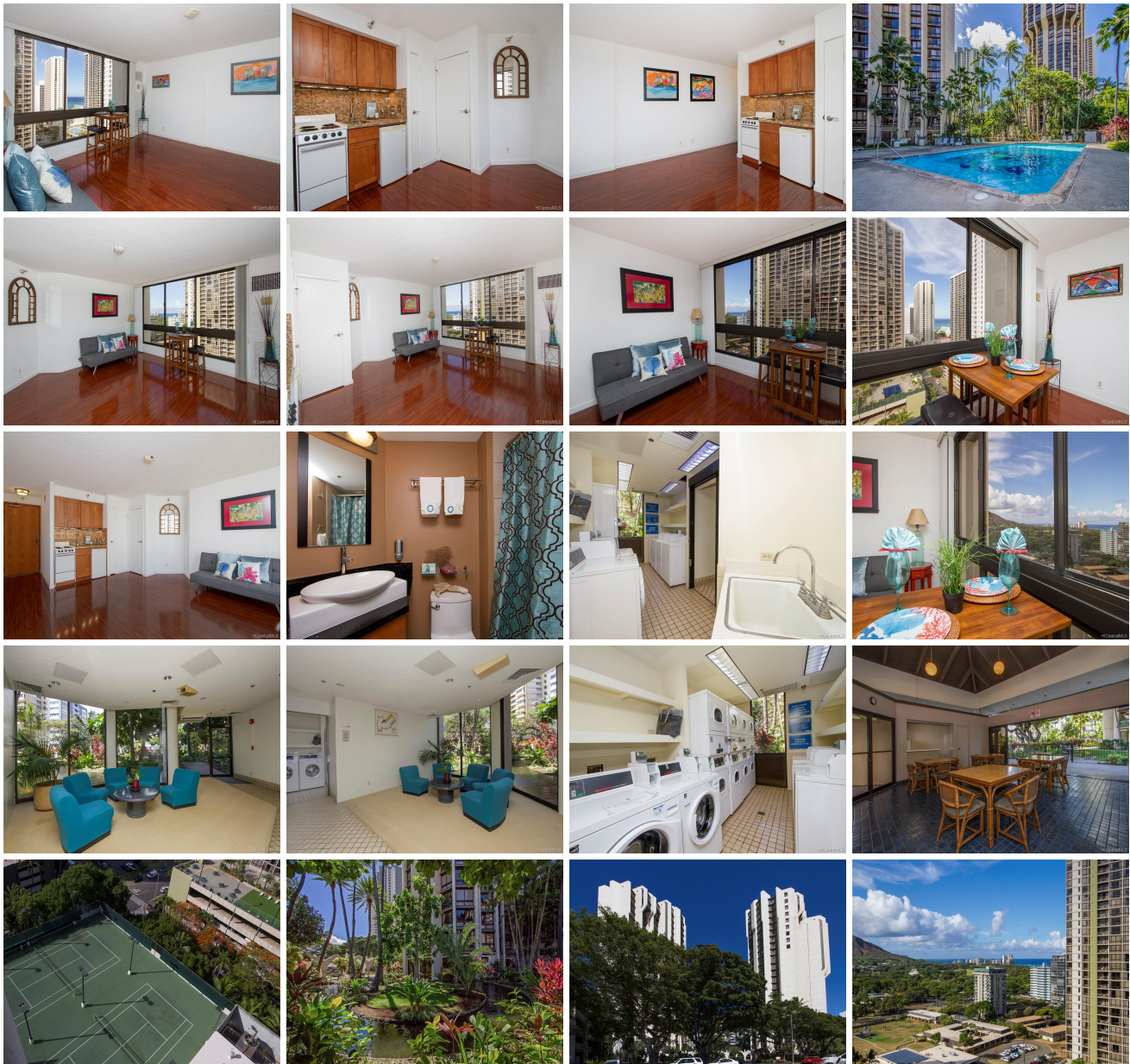


## **Liliuokalani Gardens 300 Wai Nani Street Unit I1907, Honolulu 96815 \* Liliuokalani**

**Gardens \* \$300,000**

Sold Price: \$300,000	Sold Date: 08-24-2021	Sold Ratio: 100%
Beds: <b>0</b>	MLS#: <b><u>202118250</u>, FS</b>	Year Built: <b>1984</b>
Bath: <b>1/0</b>	Status: <b>Sold</b>	Remodeled:
Living Sq. Ft.: <b>321</b>	List Date & DOM: <b>07-08-2021 &amp; 13</b>	Total Parking: <b>1</b>
Land Sq. Ft.: <b>0</b>	Condition: <b>Excellent</b>	<a href="#">Assessed Value</a>
Lanai Sq. Ft.: <b>0</b>	Frontage:	Building: <b>\$209,000</b>
Sq. Ft. Other: <b>0</b>	Tax/Year: <b>\$57/2021</b>	Land: <b>\$60,200</b>
Total Sq. Ft. <b>321</b>	Neighborhood: <b>Waikiki</b>	Total: <b>\$269,200</b>
Maint./Assoc. <b>\$369 / \$0</b>	<a href="#">Flood Zone</a> : <b>Zone AE - <a href="#">Tool</a></b>	Stories / CPR: <b>One / No</b>
Parking: <b>Guest, Unassigned</b>	Frontage:	
<a href="#">Zoning</a> : <b>X2 - Apartment Precinct</b>	View: <b>Ocean</b>	

**Public Remarks:** Conveniently located at the east end of Waikiki looking out to Kapiolani park and the ocean. Features a remodeled kitchen with granite countertops, backsplash and hardwood cabinets. The bath also has a granite countertop, large sink, updated toilet and tile flooring. The high quality laminate flooring adds warmth and comfort to your cozy studio residence. This corner unit faces south east and is in the Queen Tower, closest to Waikiki Beach. Liliuokalani Gardens is a secure community with a luxurious pool, whirlpool, bbq grills, koi pond, tennis courts, club house, roaming security, resident manager and guest parking. **Sale Conditions:** None **Schools:** [Jefferson](#), [Washington](#), [Kaimuki](#) \* [Request Showing](#), [Photos](#), [History](#), [Maps](#), [Deed](#), [Watch List](#), [Tax Info](#)





Address	Price	Bd & Bth	Living / Avg.	Land   Avg.	Lanai	Occ.	FL	DOM
<a href="#">300 Wai Nani Street I1907</a>	<a href="#">\$300,000</a>	0 & 1/0	321   \$935	0   \$inf	0	28%	19	13

Address	Tax   Maint.   Ass.	Assessed Land	Assessed Building	Assessed Total	Ratio	Year & Remodeled
<a href="#">300 Wai Nani Street I1907</a>	\$57   \$369   \$0	\$60,200	\$209,000	\$269,200	111%	1984 & NA

Address	Sold Price	Sold Date	Sold Ratio	Original Ratio	Sold Terms
<a href="#">300 Wai Nani Street I1907</a>	\$300,000	08-24-2021	100%	100%	Cash

[300 Wai Nani Street I1907](#) - MLS#: [202118250](#) - Conveniently located at the east end of Waikiki looking out to Kapiolani park and the ocean. Features a remodeled kitchen with granite countertops, backsplash and hardwood cabinets. The bath also has a granite countertop, large sink, updated toilet and tile flooring. The high quality laminate flooring adds warmth and comfort to your cozy studio residence. This corner unit faces south east and is in the Queen Tower, closest to Waikiki Beach. Liliuokalani Gardens is a secure community with a luxurious pool, whirlpool, bbq grills, koi pond, tennis courts, club house, roaming security, resident manager and guest parking. **Region:** Metro **Neighborhood:** Waikiki **Condition:** Excellent **Parking:** Guest, Unassigned **Total Parking:** 1 **View:** Ocean **Frontage:** **Pool:** **Zoning:** X2 - Apartment Precinct **Sale Conditions:** None **Schools:** [Jefferson](#), [Washington](#), [Kaimuki](#) \* [Request Showing](#), [Photos](#), [History](#), [Maps](#), [Deed](#), [Watch List](#), [Tax Info](#)

DOM = Days on Market, Occ. = Occupancy, FL = Floor Number