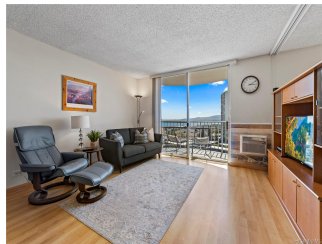


**Pearl Ridge Gdns & Twr 98-1038 Moanalua Road Unit 7-1903, Aiea 96701 \* Pearl Ridge Gdns & Twr \* \$232,000**

Sold Price: \$260,000	Sold Date: 09-13-2021	Sold Ratio: 112%
Beds: <b>1</b>	MLS#: <b>202119673, FS</b>	Year Built: <b>1976</b>
Bath: <b>1/0</b>	Status: <b>Sold</b>	Remodeled: <b>2021</b>
Living Sq. Ft.: <b>523</b>	List Date & DOM: <b>08-02-2021 &amp; 6</b>	Total Parking: <b>1</b>
Land Sq. Ft.: <b>250,557</b>	Condition: <b>Above Average, Excellent</b>	<a href="#">Assessed Value</a>
Lanai Sq. Ft.: <b>60</b>	Frontage:	Building: <b>\$132,200</b>
Sq. Ft. Other: <b>0</b>	Tax/Year: <b>\$39/2021</b>	Land: <b>\$80,600</b>
Total Sq. Ft. <b>583</b>	Neighborhood: <b>Pearlridge</b>	Total: <b>\$212,800</b>
Maint./Assoc. <b>\$506 / \$0</b>	<a href="#">Flood Zone</a> : <b>Zone X - Tool</b>	Stories / CPR: <b>21+ / No</b>
Parking: <b>Assigned, Covered - 1, Guest</b>	Frontage:	
<a href="#">Zoning</a> : <b>13 - A-3 High Density Apartment</b>	View: <b>City, Mountain, Ocean, Sunset</b>	

**Public Remarks:** Move-in ready high floor unit at the popular Pearl Ridge Gardens & Tower located right across from Pearlridge Mall. This spacious 1 bedroom, 1 bath condo has been renovated throughout and features a completely remodeled bathroom, laminate flooring, stainless steel appliances, a large walk-in closet, 1 covered parking and a spacious lanai with panoramic ocean and mountain views. The buildings amenities include community laundry, two pools, BBQ areas, club room, on-site resident manager, security, keyed entry and plenty of guest parking. The maintenance fee includes water, sewer, cable, internet, common area expenses and building insurance. Enjoy the convenience of living right across from Pearlridge Mall with only a short walk away from stores, restaurants, movies, hospital, bus line and easy access to the freeway. Come see it before it's gone! **Sale Conditions:** None **Schools:** , , \* [Request Showing](#), [Photos](#), [History](#), [Maps](#), [Deed](#), [Watch List](#), [Tax Info](#)



Address	Price	Bd & Bth	Living / Avg.	Land   Avg.	Lanai	Occ.	FL	DOM
<a href="#">98-1038 Moanalua Road 7-1903</a>	<a href="#">\$232,000</a>	1 & 1/0	523   \$444	250,557   \$1	60	52%	19	6

Address	Tax   Maint.   Ass.	Assessed Land	Assessed Building	Assessed Total	Ratio	Year & Remodeled
<a href="#">98-1038 Moanalua Road 7-1903</a>	\$39   \$506   \$0	\$80,600	\$132,200	\$212,800	109%	1976 & 2021

Address	Sold Price	Sold Date	Sold Ratio	Original Ratio	Sold Terms
<a href="#">98-1038 Moanalua Road 7-1903</a>	\$260,000	09-13-2021	112%	112%	VA

[98-1038 Moanalua Road 7-1903](#) - MLS#: [202119673](#) - Move-in ready high floor unit at the popular Pearl Ridge Gardens & Tower located right across from Pearlridge Mall. This spacious 1 bedroom, 1 bath condo has been renovated throughout and features a completely remodeled bathroom, laminate flooring, stainless steel appliances, a large walk-in closet, 1 covered parking and a spacious lanai with panoramic ocean and mountain views. The buildings amenities include community laundry, two pools, BBQ areas, club room, on-site resident manager, security, keyed entry and plenty of guest parking. The maintenance fee includes water, sewer, cable, internet, common area expenses and building insurance. Enjoy the convenience of living right across from Pearlridge Mall with only a short walk away from stores, restaurants, movies, hospital, bus line and easy access to the freeway. Come see it before it's gone! **Region:** Pearl City **Neighborhood:** Pearlridge **Condition:** Above Average, Excellent **Parking:** Assigned, Covered - 1, Guest **Total Parking:** 1 **View:** City, Mountain, Ocean, Sunset **Frontage:** **Pool:** **Zoning:** 13 - A-3 High Density Apartment **Sale Conditions:** None **Schools:** , , \* [Request Showing](#), [Photos](#), [History](#), [Maps](#), [Deed](#), [Watch List](#), [Tax Info](#)

DOM = Days on Market, Occ. = Occupancy, FL = Floor Number