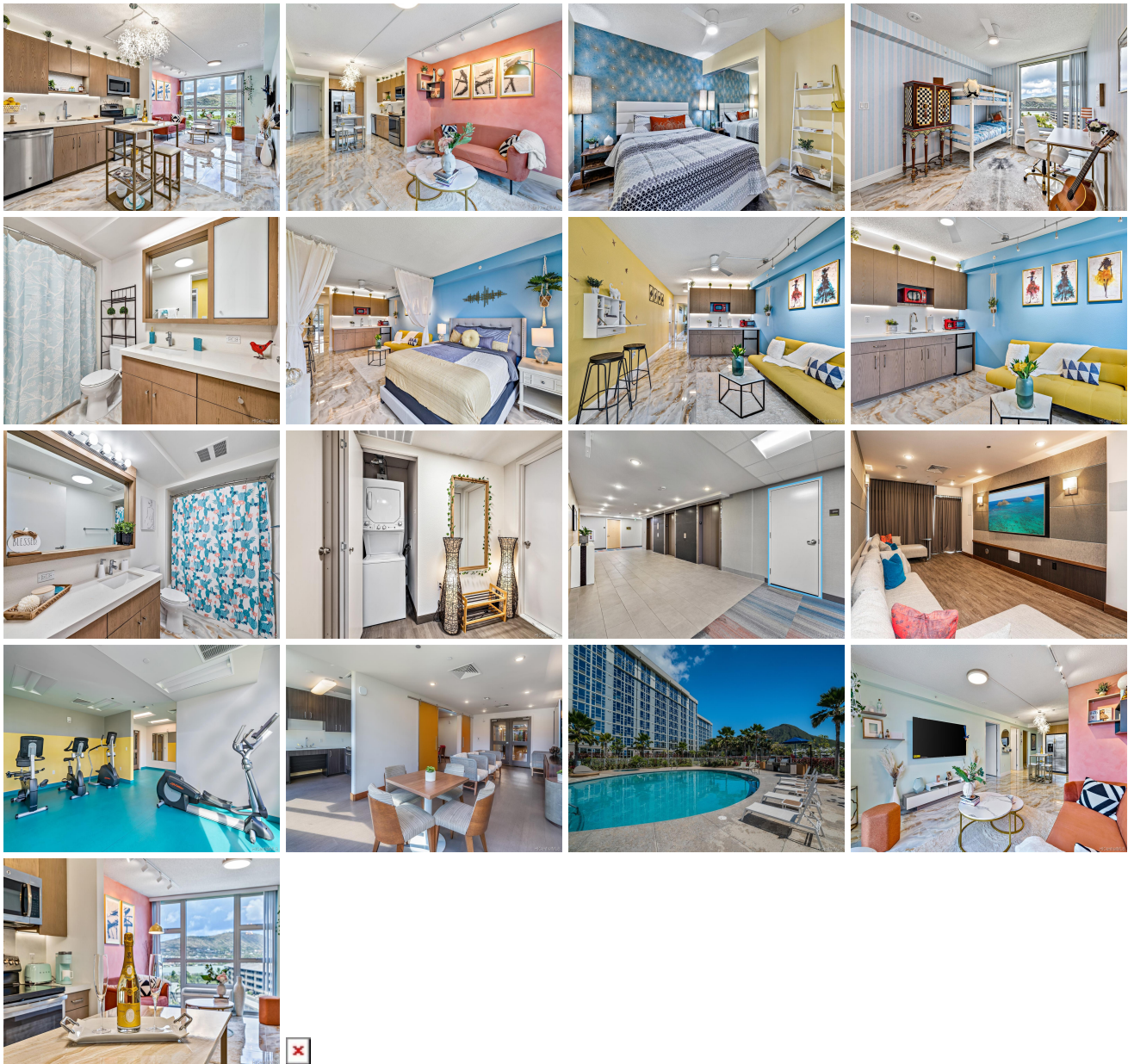


Hale Ka Lae 7000 Hawaii Kai Drive Unit 2908, Honolulu 96825 * Hale Ka Lae * \$945,000

Beds: 3	MLS#: 202121070, FS	Year Built: 2016
Bath: 2/0	Status: Cancelled	Remodeled: 2021
Living Sq. Ft.: 1,145	List Date & DOM: 08-30-2021 & 32	Total Parking: 2
Land Sq. Ft.: 0	Condition: Excellent	Assessed Value
Lanai Sq. Ft.: 0	Frontage: Other	Building: \$608,200
Sq. Ft. Other: 0	Tax/Year: \$214/2021	Land: \$124,200
Total Sq. Ft. 1,145	Neighborhood: West Marina	Total: \$732,400
Maint./Assoc. \$649 / \$0	Flood Zone : Zone D - Tool	Stories / CPR: 8-14 / No
Parking: Assigned, Covered - 2, Guest, Secured Entry		Frontage: Other
Zoning : 12 - A-2 Medium Density Apartme		View: Garden, Marina/Canal, Ocean

Public Remarks: MUST SEE! Highly upgraded with luxurious onyx stone flooring and modern furnishings throughout, this stunning home is move-in ready! With views overlooking Koko Head, the Marina and the ocean, this 3 bdrm, 2 bath "flex unit" offers multi-generational living or investment opportunity. 2 bdrms, 1 bath with full kitchen on one side and a master suite with wet bar on the other. Both share the main entry foyer, have separate suite numbers and mailboxes. Plus, a large storage unit and 2 secured, covered parking are included. Enjoy resort-style amenities including a salt-water pool, fitness center, movie room, and dog park without ever leaving home! **Sale Conditions:** None **Schools:** [Hahaione](#), [Niu Valley](#), [Kaiser](#) * [Request Showing](#), [Photos](#), [History](#), [Maps](#), [Deed](#), [Watch List](#), [Tax Info](#)



Address	Price	Bd & Bth	Living / Avg.	Land Avg.	Lanai	Occ.	FL	DOM
---------	-------	----------	---------------	-------------	-------	------	----	-----

7000 Hawaii Kai Drive 2908	\$945,000	3 & 2/0	1,145 \$825	0 \$inf	0	53%	9	32
--	---------------------------	---------	---------------	-----------	---	-----	---	----

Address	Tax Maint. Ass.	Assessed Land	Assessed Building	Assessed Total	Ratio	Year & Remodeled
7000 Hawaii Kai Drive 2908	\$214 \$649 \$0	\$124,200	\$608,200	\$732,400	129%	2016 & 2021

7000 Hawaii Kai Drive 2908 - MLS#: 202121070 - MUST SEE! Highly upgraded with luxurious onyx stone flooring and modern furnishings throughout, this stunning home is move-in ready! With views overlooking Koko Head, the Marina and the ocean, this 3 bdrm, 2 bath "flex unit" offers multi-generational living or investment opportunity. 2 bdrms, 1 bath with full kitchen on one side and a master suite with wet bar on the other. Both share the main entry foyer, have separate suite numbers and mailboxes. Plus, a large storage unit and 2 secured, covered parking are included. Enjoy resort-style amenities including a salt-water pool, fitness center, movie room, and dog park without ever leaving home! Region: Hawaii Kai Neighborhood: West Marina Condition: Excellent Parking: Assigned, Covered - 2, Guest, Secured Entry Total Parking: 2 View: Garden, Marina/Canal, Ocean Frontage: Other Pool: Zoning: 12 - A-2 Medium Density Apartme Sale Conditions: None Schools: Hahaione , Niu Valley , Kaiser * Request Showing , Photos , History , Maps , Deed , Watch List , Tax Info						
---	--	--	--	--	--	--

DOM = Days on Market, Occ. = Occupancy, FL = Floor Number