

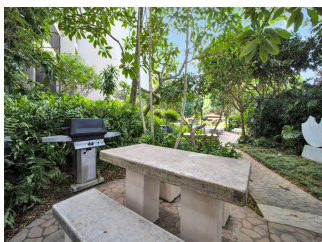
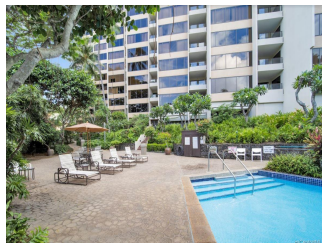
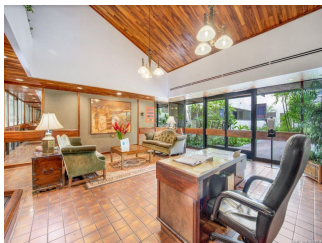
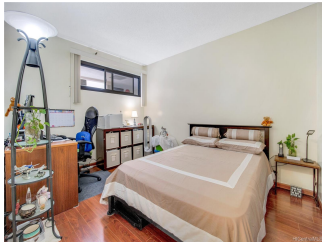
Commodore 555 Hahaione Street Unit 11B, Honolulu 96825 * Commodore * \$575,000

Sold Price: \$631,000	Sold Date: 10-19-2021	Sold Ratio: 110%
Beds: 2	MLS#: 202123473, FS	Year Built: 1982
Bath: 2/0	Status: Sold	Remodeled: 2020
Living Sq. Ft.: 1,238	List Date & DOM: 09-09-2021 & 5	Total Parking: 2
Land Sq. Ft.: 94,002	Condition: Excellent	Assessed Value
Lanai Sq. Ft.: 77	Frontage: Other	Building: \$374,400
Sq. Ft. Other: 0	Tax/Year: \$111/2021	Land: \$147,000
Total Sq. Ft. 1,315	Neighborhood: Hahaione-lower	Total: \$521,400
Maint./Assoc. \$1,260 / \$0	Flood Zone : Zone D - Tool	Stories / CPR: 15-20 / No
Parking: Assigned, Covered - 2, Garage, Guest, Secured Entry, Street	Frontage: Other	

Zoning: 12 - A-2 Medium Density Apartme

View: **Coastline, Garden, Marina/Canal, Mountain, Ocean, Sunset**

Public Remarks: NEW LISTING - This RARELY available "B" stack 2 Bed/2 Bath/2 parking high-floor unit has been meticulously maintained and features an open floorplan, upgraded flooring, freshly painted, upgraded kitchen, stainless steel refrigerator, cool breezes, covered assigned parking, upgraded bathroom, pet friendly, additional storage, and endless marina views. Enjoy resort style amenities - heated pool, meeting rooms, gym, sauna, multiple bbq's, billiard/card rooms, security, & reading room all in a private setting. Commodore is conveniently located near shopping centers, restaurants, parks, beaches, markets, schools, bus stops, & much more! A Must See!!! **Sale Conditions:** None **Schools:** , , * [Request Showing](#), [Photos](#), [History](#), [Maps](#), [Deed](#), [Watch List](#), [Tax Info](#)



Address	Price	Bd & Bth	Living / Avg.	Land Avg.	Lanai	Occ.	FL	DOM
555 Hahaione Street 11B	\$575,000	2 & 2/0	1,238 \$464	94,002 \$6	77	63%	11	5

Address	Tax Maint. Ass.	Assessed Land	Assessed Building	Assessed Total	Ratio	Year & Remodeled
555 Hahaione Street 11B	\$111 \$1,260 \$0	\$147,000	\$374,400	\$521,400	110%	1982 & 2020

Address	Sold Price	Sold Date	Sold Ratio	Original Ratio	Sold Terms
555 Hahaione Street 11B	\$631,000	10-19-2021	110%	110%	Conventional

[555 Hahaione Street 11B](#) - MLS#: [202123473](#) - NEW LISTING - This RARELY available "B" stack 2 Bed/2 Bath/2 parking high-floor unit has been meticulously maintained and features an open floorplan, upgraded flooring, freshly painted, upgraded kitchen, stainless steel refrigerator, cool breezes, covered assigned parking, upgraded bathroom, pet friendly, additional storage, and endless marina views. Enjoy resort style amenities - heated pool, meeting rooms, gym, sauna, multiple bbq's, billiard/card rooms, security, & reading room all in a private setting. Commodore is conveniently located near shopping centers, restaurants, parks, beaches, markets, schools, bus stops, & much more! A Must See!!! **Region:** Hawaii Kai **Neighborhood:** Hahaione-lower **Condition:** Excellent **Parking:** Assigned, Covered - 2, Garage, Guest, Secured Entry, Street **Total Parking:** 2 **View:** Coastline, Garden, Marina/Canal, Mountain, Ocean, Sunset **Frontage:** Other **Pool:** **Zoning:** 12 - A-2 Medium Density Apartme **Sale Conditions:** None **Schools:** , , * [Request Showing](#), [Photos](#), [History](#), [Maps](#), [Deed](#), [Watch List](#), [Tax Info](#)

DOM = Days on Market, Occ. = Occupancy, FL = Floor Number