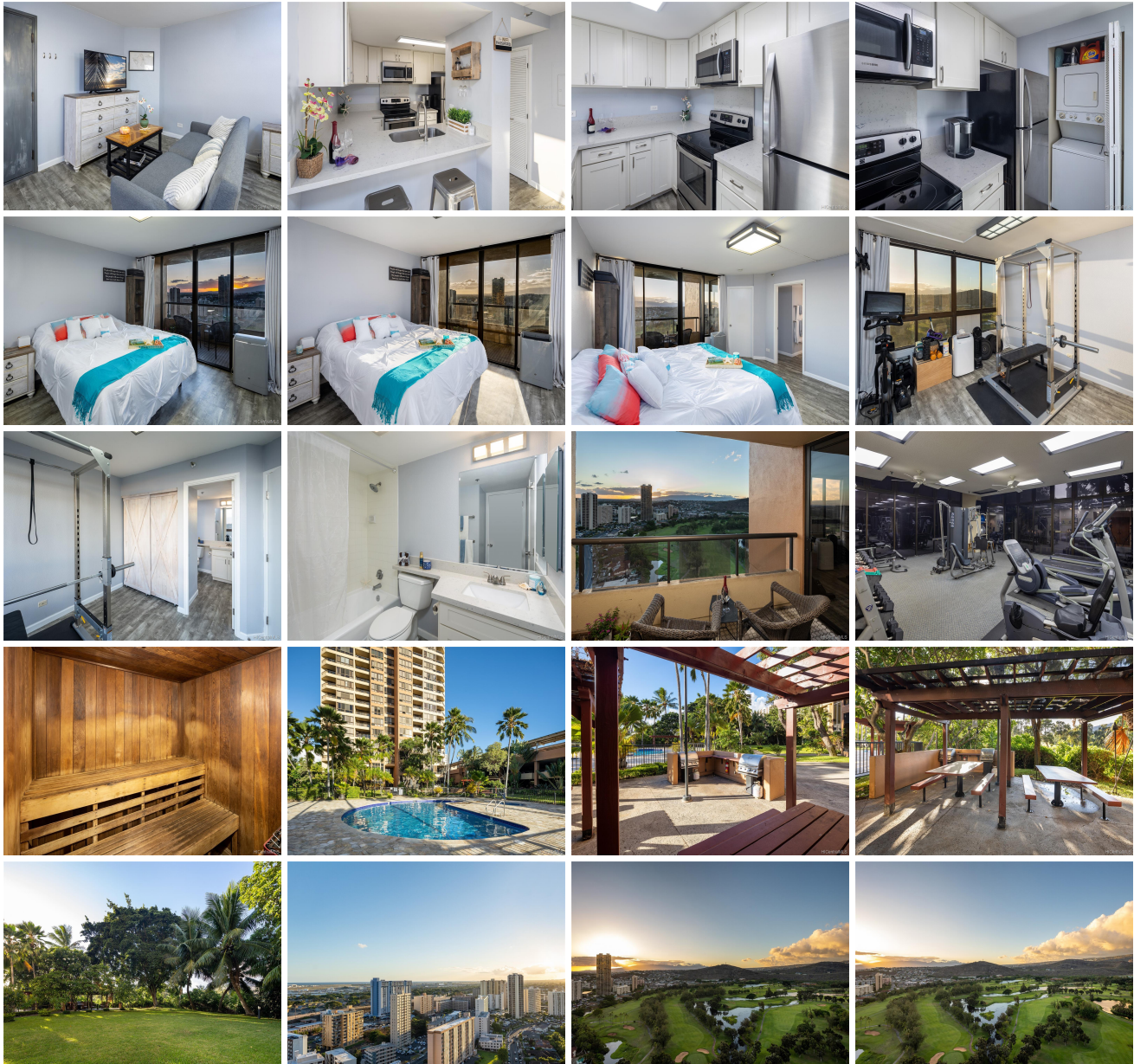


Plaza Landmark 5333 Likini Street Unit 2603, Honolulu 96818 * Plaza Landmark * \$440,000

Sold Price: \$440,000	Sold Date: 10-29-2021	Sold Ratio: 100%
Beds: 1	MLS#: <u>202123657</u>, FS	Year Built: 1984
Bath: 1/0	Status: Sold	Remodeled: 2020
Living Sq. Ft.: 595	List Date & DOM: 09-10-2021 & 7	Total Parking: 1
Land Sq. Ft.: 0	Condition: Above Average, Excellent	Assessed Value
Lanai Sq. Ft.: 73	Frontage: Golf Course, Lake/Pond	Building: \$387,700
Sq. Ft. Other: 0	Tax/Year: \$128/2020	Land: \$52,100
Total Sq. Ft. 668	Neighborhood: Salt Lake	Total: \$439,800
Maint./Assoc. \$594 / \$0	Flood Zone : Zone X - Tool	Stories / CPR: 21+ / No
Parking: Covered - 1, Guest, Street	Frontage: Golf Course, Lake/Pond	View: City, Golf Course, Mountain, Ocean, Sunset
Zoning : 12 - A-2 Medium Density Apartme		

Public Remarks: Enjoy magnificent views from this highly desirable, corner unit on the 26th floor! This luxury resort-style complex features a gated entrance, large sized pool, jacuzzi, bbq cabanas, exercise room, saunas, lush landscaping including a koi fish pond, and more. Relax on your lanai with captivating mountain, ocean, and golf course views along with amazing sunsets to end your day. This well-maintained unit has one of the best covered parking stalls in the building on the 1st floor along with a separate storage locker on the same floor as your unit. Pet friendly building, fire sprinklers, and washer/dryer are also included. Conveniently located near shops, restaurants, military bases, airport, with easy access to freeways. **Sale**

Conditions: None **Schools:** [Salt Lake](#), [Moanalua](#), [Moanalua](#) * [Request Showing](#), [Photos](#), [History](#), [Maps](#), [Deed](#), [Watch List](#), [Tax Info](#)





Address	Price	Bd & Bth	Living / Avg.	Land Avg.	Lanai	Occ.	FL	DOM
5333 Likini Street 2603	\$440,000	1 & 1/0	595 \$739	0 \$inf	73	41%	26	7

Address	Tax Maint. Ass.	Assessed Land	Assessed Building	Assessed Total	Ratio	Year & Remodeled
5333 Likini Street 2603	\$128 \$594 \$0	\$52,100	\$387,700	\$439,800	100%	1984 & 2020

Address	Sold Price	Sold Date	Sold Ratio	Original Ratio	Sold Terms
5333 Likini Street 2603	\$440,000	10-29-2021	100%	100%	Conventional

5333 Likini Street 2603 - MLS#: 202123657 - Enjoy magnificent views from this highly desirable, corner unit on the 26th floor! This luxury resort-style complex features a gated entrance, large sized pool, jacuzzi, bbq cabanas, exercise room, saunas, lush landscaping including a koi fish pond, and more. Relax on your lanai with captivating mountain, ocean, and golf course views along with amazing sunsets to end your day. This well-maintained unit has one of the best covered parking stalls in the building on the 1st floor along with a separate storage locker on the same floor as your unit. Pet friendly building, fire sprinklers, and washer/dryer are also included. Conveniently located near shops, restaurants, military bases, airport, with easy access to freeways. Region: Metro Neighborhood: Salt Lake Condition: Above Average, Excellent Parking: Covered - 1, Guest, Street Total Parking: 1 View: City, Golf Course, Mountain, Ocean, Sunset Frontage: Golf Course, Lake/Pond Pool: Zoning: 12 - A-2 Medium Density Apartme Sale Conditions: None Schools: Salt Lake , Moanalua , Moanalua * Request Showing , Photos , History , Maps , Deed , Watch List , Tax Info					
---	--	--	--	--	--

DOM = Days on Market, Occ. = Occupancy, FL = Floor Number