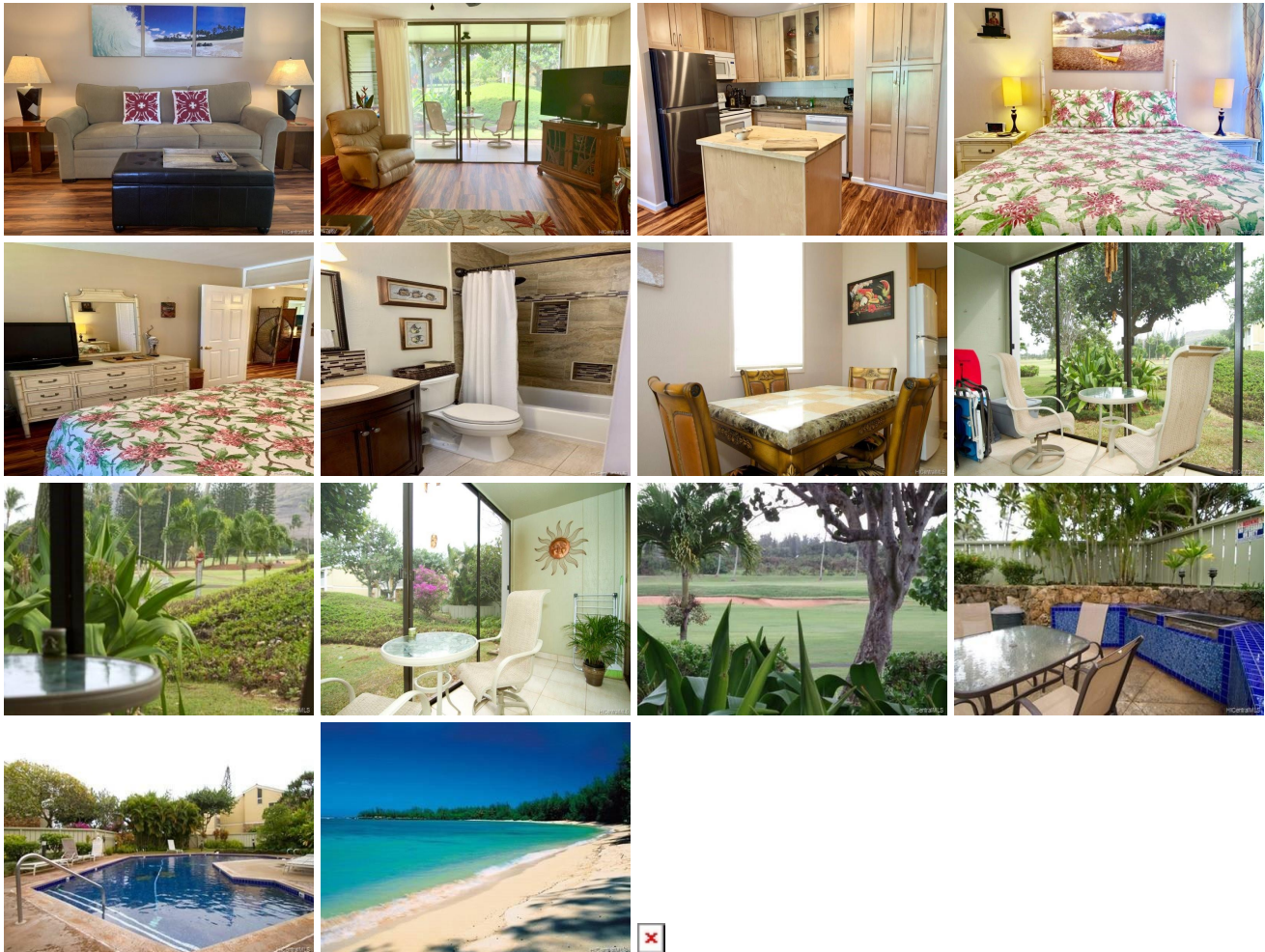


Kuilima Ests East 57-091 Lalo Kuilima Place Unit 433, Kahuku 96731 * Kuilima Ests East *

\$799,000

Sold Price: \$804,000	Sold Date: 12-22-2021	Sold Ratio: 101%
Beds: 1	MLS#: 202123987 , FS	Year Built: 1975
Bath: 1/0	Status: Sold	Remodeled:
Living Sq. Ft.: 658	List Date & DOM: 09-17-2021 & 33	Total Parking: 1
Land Sq. Ft.: 647,519	Condition: Above Average	Assessed Value
Lanai Sq. Ft.: 127	Frontage: Golf Course	Building: \$352,200
Sq. Ft. Other: 0	Tax/Year: \$153/2020	Land: \$173,700
Total Sq. Ft. 785	Neighborhood: Kuilima	Total: \$525,900
Maint./Assoc. \$622 / \$0	Flood Zone : Zone AE - Tool	Stories / CPR: / No
Parking: Assigned, Guest, Open - 1	Frontage: Golf Course	
Zoning : 11 - A-1 Low Density Apartment	View: Garden, Golf Course	

Public Remarks: Beautiful 1 bedroom, 1 bath ground floor, corner unit with open green space/golf course frontage in Kuilima Estates East. Upgrades included throughout the unit consist of a new window A/C unit, new refrigerator, new laminate flooring, new ceiling fan and closet doors in bedroom, and ideal parking spot nearby the unit. Here is your chance to enjoy the best in resort living on Oahu's North Shore. Kuilima Estates East offers two heated swimming pools, tennis courts, and world class beaches nearby for swimming, snorkeling, surfing, beach walks, and more. It's close proximity to the newly renovated Turtle Bay Resort is also a wonderful perk. Ideal for your families North Shore beach home or rent out as a vacation rental. These Kuilima Estates opportunities are becoming rare, here's your chance to live the North Shore lifestyle. **Sale Conditions:** None **Schools:** [Kahuku](#), [Kahuku](#), [Kahuku](#) * [Request Showing](#), [Photos](#), [History](#), [Maps](#), [Deed](#), [Watch List](#), [Tax Info](#)



Address	Price	Bd & Bth	Living / Avg.	Land Avg.	Lanai	Occ.	FL	DOM
57-091 Lalo Kuilima Place 433	\$799,000	1 & 1/0	658 \$1,214	647,519 \$1	127	22%	1	33

Address	Tax Maint. Ass.	Assessed Land	Assessed Building	Assessed Total	Ratio	Year & Remodeled
57-091 Lalo Kuilima Place 433	\$153 \$622 \$0	\$173,700	\$352,200	\$525,900	152%	1975 & NA

Address	Sold Price	Sold Date	Sold Ratio	Original Ratio	Sold Terms
57-091 Lalo Kuilima Place 433	\$804,000	12-22-2021	101%	101%	Conventional

[57-091 Lalo Kuilima Place 433](#) - MLS#: [202123987](#) - Beautiful 1 bedroom, 1 bath ground floor, corner unit with open green space/golf course frontage in Kuilima Estates East. Upgrades included throughout the unit consist of a new window A/C unit, new refrigerator, new laminate flooring, new ceiling fan and closet doors in bedroom, and ideal parking spot nearby the unit. Here is your chance to enjoy the best in resort living on Oahu's North Shore. Kuilima Estates East offers two heated swimming pools, tennis courts, and world class beaches nearby for swimming, snorkeling, surfing, beach walks, and more. It's close proximity to the newly renovated Turtle Bay Resort is also a wonderful perk. Ideal for your families North Shore beach home or rent out as a vacation rental. These Kuilima Estates opportunities are becoming rare, here's your chance to live the North Shore lifestyle. **Region:** North Shore **Neighborhood:** Kuilima **Condition:** Above Average **Parking:** Assigned, Guest, Open - 1 **Total Parking:** 1 **View:** Garden, Golf Course **Frontage:** Golf Course **Pool:** **Zoning:** 11 - A-1 Low Density Apartment **Sale Conditions:** None **Schools:** [Kahuku](#), [Kahuku](#), [Kahuku](#) * [Request Showing](#), [Photos](#), [History](#), [Maps](#), [Deed](#), [Watch List](#), [Tax Info](#)

DOM = Days on Market, Occ. = Occupancy, FL = Floor Number