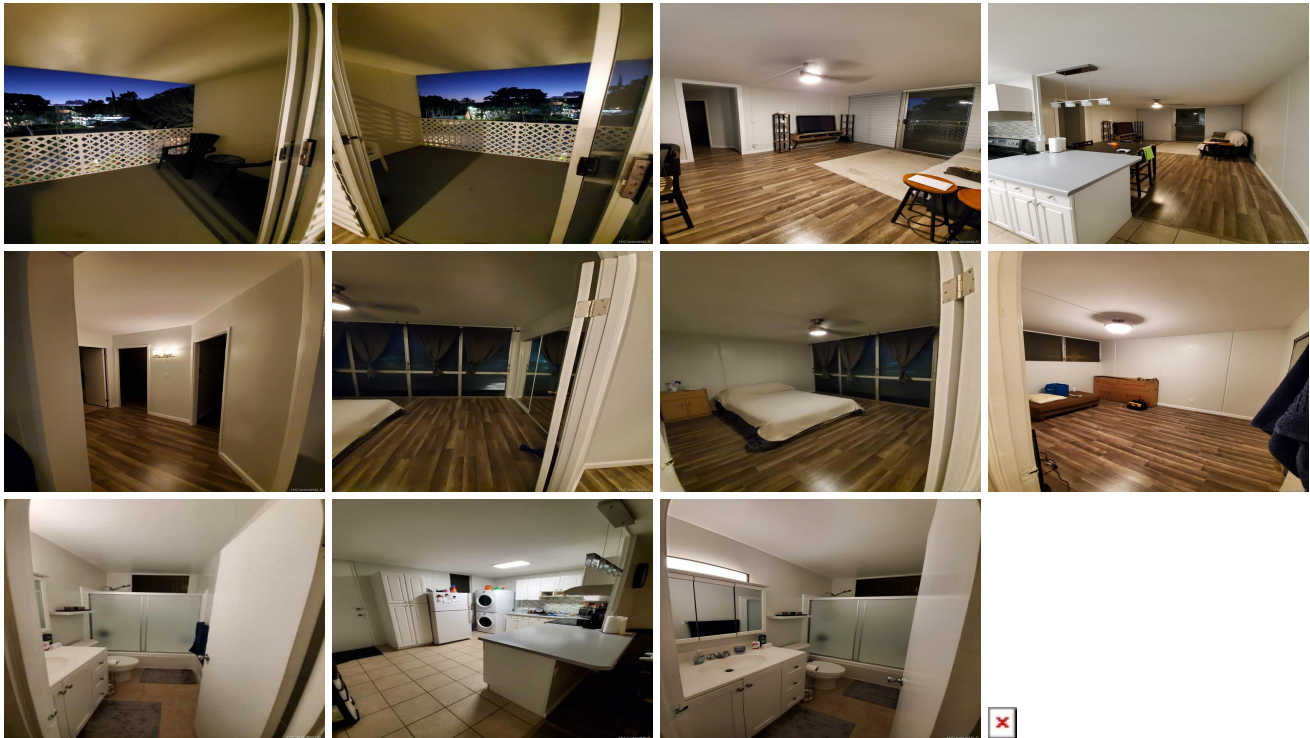


Valleyview Melemanu 95-2047 Waikalani Place Unit D406, Mililani 96789 * Valleyview

Melemanu * \$358,000

Sold Price: \$380,000	Sold Date: 11-02-2021	Sold Ratio: 106%
Beds: 2	MLS#: 202124494, FS	Year Built: 1973
Bath: 1/0	Status: Sold	Remodeled:
Living Sq. Ft.: 799	List Date & DOM: 09-27-2021 & 3	Total Parking: 2
Land Sq. Ft.: 175,024	Condition: Above Average	Assessed Value
Lanai Sq. Ft.: 97	Frontage: Other	Building: \$203,000
Sq. Ft. Other: 0	Tax/Year: \$87/2021	Land: \$96,000
Total Sq. Ft. 896	Neighborhood: Waipio Acres-waikalani Woodlands	Total: \$299,000
Maint./Assoc. \$659 / \$0	Flood Zone : Zone D - Tool	Stories / CPR: 4-7 / No
Parking: Covered - 1, Guest, Open - 1	Frontage: Other	
Zoning : 11 - A-1 Low Density Apartment	View: Garden, Mountain	

Public Remarks: Your Private Sanctuary is located in a lush green environment in Waikalani Woodlands. This charming two-bedroom and one-bath home offers clean, functional, and visually arresting spaces with contemporary finishes. The living area is part of an informal open-plan space, which includes the casual dining area. The bedrooms are easily adapted to suit a variety of needs. Amenities include BBQ, pool, and recreation area. Nearby we have shops, cafes, schools and more. This home comes with two parking slots, one open and one covered. It's not often you find an opportunity like this in such a sought-after location. Call for an appointment to view this exceptional home. **Sale Conditions:** None **Schools:** , , * [Request Showing, Photos, History, Maps, Deed, Watch List, Tax Info](#)



Address	Price	Bd & Bth	Living / Avg.	Land Avg.	Lanai	Occ.	FL	DOM
95-2047 Waikalani Place D406	\$358,000	2 & 1/0	799 \$448	175,024 \$2	97	56%	4	3

Address	Tax Maint. Ass.	Assessed Land	Assessed Building	Assessed Total	Ratio	Year & Remodeled
95-2047 Waikalani Place D406	\$87 \$659 \$0	\$96,000	\$203,000	\$299,000	120%	1973 & NA

Address	Sold Price	Sold Date	Sold Ratio	Original Ratio	Sold Terms
95-2047 Waikalani Place D406	\$380,000	11-02-2021	106%	106%	Conventional

[95-2047 Waikalani Place D406](#) - MLS#: [202124494](#) - Your Private Sanctuary is located in a lush green environment in Waikalani Woodlands. This charming two-bedroom and one-bath home offers clean, functional, and visually arresting spaces with contemporary finishes. The living area is part of an informal open-plan space, which includes the casual dining area. The bedrooms are easily adapted to suit a variety of needs. Amenities include BBQ, pool, and recreation area. Nearby we have shops, cafes, schools and more. This home comes with two parking slots, one open and one covered. It's not often you find an opportunity like this in such a sought-after location. Call for an appointment to view this exceptional home. **Region:** Central **Neighborhood:** Waipio Acres-waikalani Woodlands **Condition:** Above Average **Parking:** Covered - 1, Guest, Open - 1 **Total Parking:** 2 **View:** Garden, Mountain **Frontage:** Other **Pool:** **Zoning:** 11 - A-1 Low Density Apartment **Sale Conditions:** None **Schools:** , , * [Request Showing](#), [Photos](#), [History](#), [Maps](#), [Deed](#), [Watch List](#), [Tax Info](#)

DOM = Days on Market, Occ. = Occupancy, FL = Floor Number