

Aloha Lani 2211 Ala Wai Boulevard Unit 3002, Honolulu 96815 * Aloha Lani * \$353,500 *

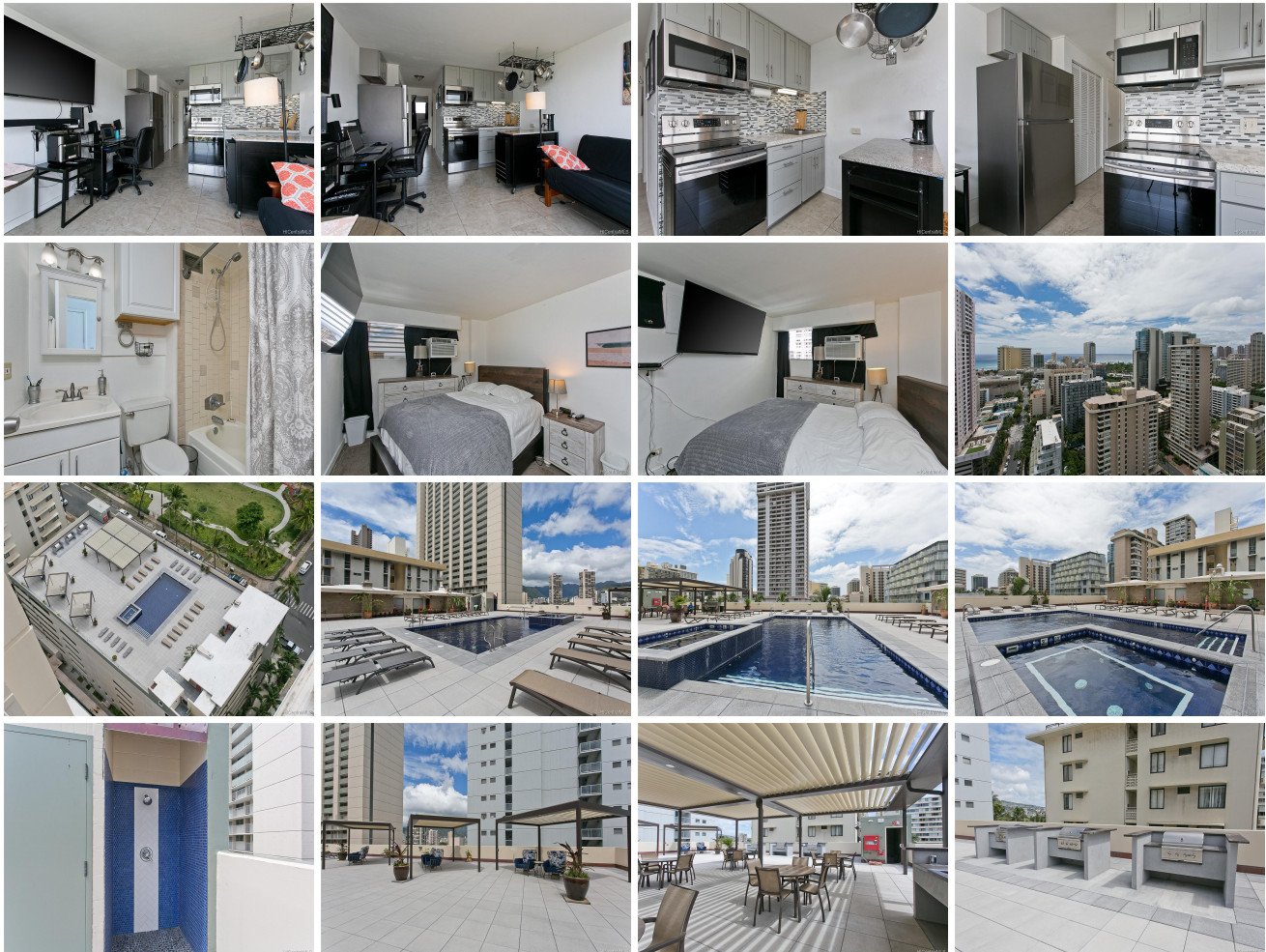
Originally \$363,500

Sold Price: \$353,500	Sold Date: 01-13-2022	Sold Ratio: 100%
Beds: 1	MLS#: <u>202124626</u> , FS	Year Built: 1976
Bath: 1/0	Status: Sold	Remodeled: 2018
Living Sq. Ft.: 413	List Date & DOM: 09-24-2021 & 25	Total Parking: 1
Land Sq. Ft.: 0	Condition: Excellent	Assessed Value
Lanai Sq. Ft.: 0	Frontage:	Building: \$262,000
Sq. Ft. Other: 0	Tax/Year: \$25/2021	Land: \$35,400
Total Sq. Ft. 413	Neighborhood: Waikiki	Total: \$297,400
Maint./Assoc. \$555 / \$0	Flood Zone : Zone AO - Tool	Stories / CPR: / No
Parking: Covered - 1, Garage, Secured Entry, Street	Frontage:	

[Zoning](#): **X2 - Apartment Precinct**

View: **City, Golf Course, Marina/Canal, Mountain, Sunrise**

Public Remarks: EXCEPTIONAL VALUE! High floor condo in desirable Aloha Lani in Waikiki is TURNKEY w/furniture, 65" surround sound TV, a 2nd flat screen TV, linens & kitchen items. Highly upgraded 1 BR, 1 BA, 1 cvd pkg w/ 24/7 Security. Enjoy floor to ceiling windows w/ sweeping mountain, golf course & Ala Wai canal views from the living/dining room & kitchen. Recently renovated w/ large-format tile flooring throughout the living/dining, kitchen, & bathroom. The open kitchen has beautiful cabinets, movable island, modern backsplash, counter & like-new appliances including a Refrigerator, Stainless Microwave Hood, Range & Storage Locker. Amenities include gym, newly renovated pool & rec deck, gas BBQ grills, sauna, rec/games room. Just steps away from Waikiki beaches, Five-star resorts, World-class dining, entertainment, shopping & so much more! This is a must to see! **Sale Conditions:** Bankruptcy **Schools:** [Jefferson](#), [Washington](#), [Kaimuki](#) * [Request Showing](#), [Photos](#), [History](#), [Maps](#), [Deed](#), [Watch List](#), [Tax Info](#)





Address	Price	Bd & Bth	Living / Avg.	Land Avg.	Lanai	Occ.	FL	DOM
2211 Ala Wai Boulevard 3002	\$353,500	1 & 1/0	413 \$856	0 \$inf	0	46%	30	25

Address	Tax Maint. Ass.	Assessed Land	Assessed Building	Assessed Total	Ratio	Year & Remodeled
2211 Ala Wai Boulevard 3002	\$25 \$555 \$0	\$35,400	\$262,000	\$297,400	119%	1976 & 2018

Address	Sold Price	Sold Date	Sold Ratio	Original Ratio	Sold Terms
2211 Ala Wai Boulevard 3002	\$353,500	01-13-2022	100%	97%	Conventional

[2211 Ala Wai Boulevard 3002](#) - MLS#: [202124626](#) - Original price was \$363,500 - EXCEPTIONAL VALUE! High floor condo in desirable Aloha Lani in Waikiki is TURNKEY w/furniture, 65" surround sound TV, a 2nd flat screen TV, linens & kitchen items. Highly upgraded 1 BR, 1 BA, 1 cvd pkg w/ 24/7 Security. Enjoy floor to ceiling windows w/ sweeping mountain, golf course & Ala Wai canal views from the living/dining room & kitchen. Recently renovated w/ large-format tile flooring throughout the living/dining, kitchen, & bathroom. The open kitchen has beautiful cabinets, movable island, modern backsplash, counter & like-new appliances including a Refrigerator, Stainless Microwave Hood, Range & Storage Locker. Amenities include gym, newly renovated pool & rec deck, gas BBQ grills, sauna, rec/games room. Just steps away from Waikiki beaches, Five-star resorts, World-class dining, entertainment, shopping & so much more! This is a must to see! **Region:** Metro **Neighborhood:** Waikiki **Condition:** Excellent **Parking:** Covered - 1, Garage, Secured Entry, Street **Total Parking:** 1 **View:** City, Golf Course, Marina/Canal, Mountain, Sunrise **Frontage:** **Pool:** **Zoning:** X2 - Apartment Precinct **Sale Conditions:** Bankruptcy **Schools:** [Jefferson](#), [Washington](#), [Kaimuki](#) * [Request Showing](#), [Photos](#), [History](#), [Maps](#), [Deed](#), [Watch List](#), [Tax Info](#)

DOM = Days on Market, Occ. = Occupancy, FL = Floor Number