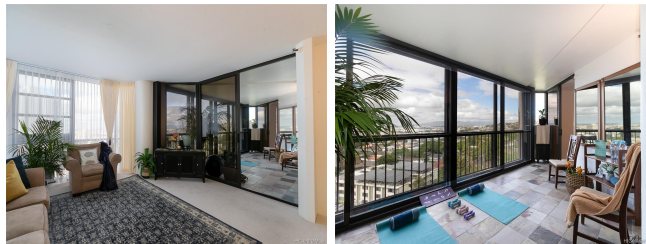


Craigside 2101 Nuuanu Avenue Unit I904, Honolulu 96817 * Craigside * \$705,000 ***Originally \$695,000**

| | | |
|---|---|--|
| Sold Price: \$705,000 | Sold Date: 01-28-2022 | Sold Ratio: 100% |
| Beds: 2 | MLS#: 202125955, FS | Year Built: 1981 |
| Bath: 2/0 | Status: Sold | Remodeled: 2020 |
| Living Sq. Ft.: 1,204 | List Date & DOM: 10-25-2021 & 36 | Total Parking: 1 |
| Land Sq. Ft.: 158,210 | Condition: Above Average, Excellent | Assessed Value |
| Lanai Sq. Ft.: 205 | Frontage: Conservation, Golf Course, Lake/Pond, Other, Preservation, Stream/Canal, Waterfront | Building: \$516,400 |
| Sq. Ft. Other: 0 | Tax/Year: \$133/2020 | Land: \$79,900 |
| Total Sq. Ft. 1,409 | Neighborhood: Nuuanu-lower | Total: \$596,300 |
| Maint./Assoc. \$1,190 / \$0 | Flood Zone : Zone X - Tool | Stories / CPR: One / No |
| Parking: Covered - 1 | Frontage: Conservation, Golf Course, Lake/Pond, Other, Preservation, Stream/Canal, Waterfront Cemetery, City, Coastline, Diamond Head, Garden, Marina/Canal, Mountain, Ocean, Sunset | View: Head, Garden, Marina/Canal, Mountain, Ocean, Sunset |
| Zoning : 13 - A-3 High Density Apartment | | |

Public Remarks: Enjoy spectacular city views from a recently renovated 2 bedrooms, 2 bath corner unit in Tower 1 at Craigside. Features include an enclosed lanai area, ceramic tile flooring, and one covered parking stall. Craigside offers quality amenities including two pools, tennis court, exercise room, sauna, BBQ area and ample guest parking. Craigside is a highly secured complex in the best location in downtown Honolulu, minutes away from restaurants, shopping, hospitals, entertainment, pharmacy, and more. Do not miss out on this unbeatable opportunity! **Sale Conditions:** None **Schools:** [Pauoa](#), [Kawananakoa](#), [Roosevelt](#) * [Request Showing](#), [Photos](#), [History](#), [Maps](#), [Deed](#), [Watch List](#), [Tax Info](#)



| Address | Price | Bd & Bth | Living / Avg. | Land Avg. | Lanai | Occ. | FL | DOM |
|---|------------------|----------|---------------|---------------|-------|------|----|-----|
| 2101 Nuuanu Avenue I904 | \$705,000 | 2 & 2/0 | 1,204 \$586 | 158,210 \$4 | 205 | 0% | 9 | 36 |

| Address | Tax Maint. Ass. | Assessed Land | Assessed Building | Assessed Total | Ratio | Year & Remodeled |
|---|-----------------------|---------------|-------------------|----------------|-------|------------------|
| 2101 Nuuanu Avenue I904 | \$133 \$1,190 \$0 | \$79,900 | \$516,400 | \$596,300 | 118% | 1981 & 2020 |

| Address | Sold Price | Sold Date | Sold Ratio | Original Ratio | Sold Terms |
|---|------------|------------|------------|----------------|------------|
| 2101 Nuuanu Avenue I904 | \$705,000 | 01-28-2022 | 100% | 101% | Cash 1000 |

[2101 Nuuanu Avenue I904](#) - MLS#: [202125955](#) - Original price was \$695,000 - Enjoy spectacular city views from a recently renovated 2 bedrooms, 2 bath corner unit in Tower 1 at Craigside. Features include an enclosed lanai area, ceramic tile flooring, and one covered parking stall. Craigside offers quality amenities including two pools, tennis court, exercise room, sauna, BBQ area and ample guest parking. Craigside is a highly secured complex in the best location in downtown Honolulu, minutes away from restaurants, shopping, hospitals, entertainment, pharmacy, and more. Do not miss out on this unbeatable opportunity!

Region: Metro **Neighborhood:** Nuuanu-lower **Condition:** Above Average, Excellent **Parking:** Covered - 1 **Total Parking:** 1 **View:** Cemetery, City, Coastline, Diamond Head, Garden, Marina/Canal, Mountain, Ocean, Sunset **Frontage:** Conservation, Golf Course, Lake/Pond, Other, Preservation, Stream/Canal, Waterfront **Pool:** **Zoning:** 13 - A-3 High Density Apartment **Sale Conditions:** None **Schools:** [Pauoa](#), [Kawananakoa](#), [Roosevelt](#) * [Request Showing](#), [Photos](#), [History](#), [Maps](#), [Deed](#), [Watch List](#), [Tax Info](#)

DOM = Days on Market, Occ. = Occupancy, FL = Floor Number