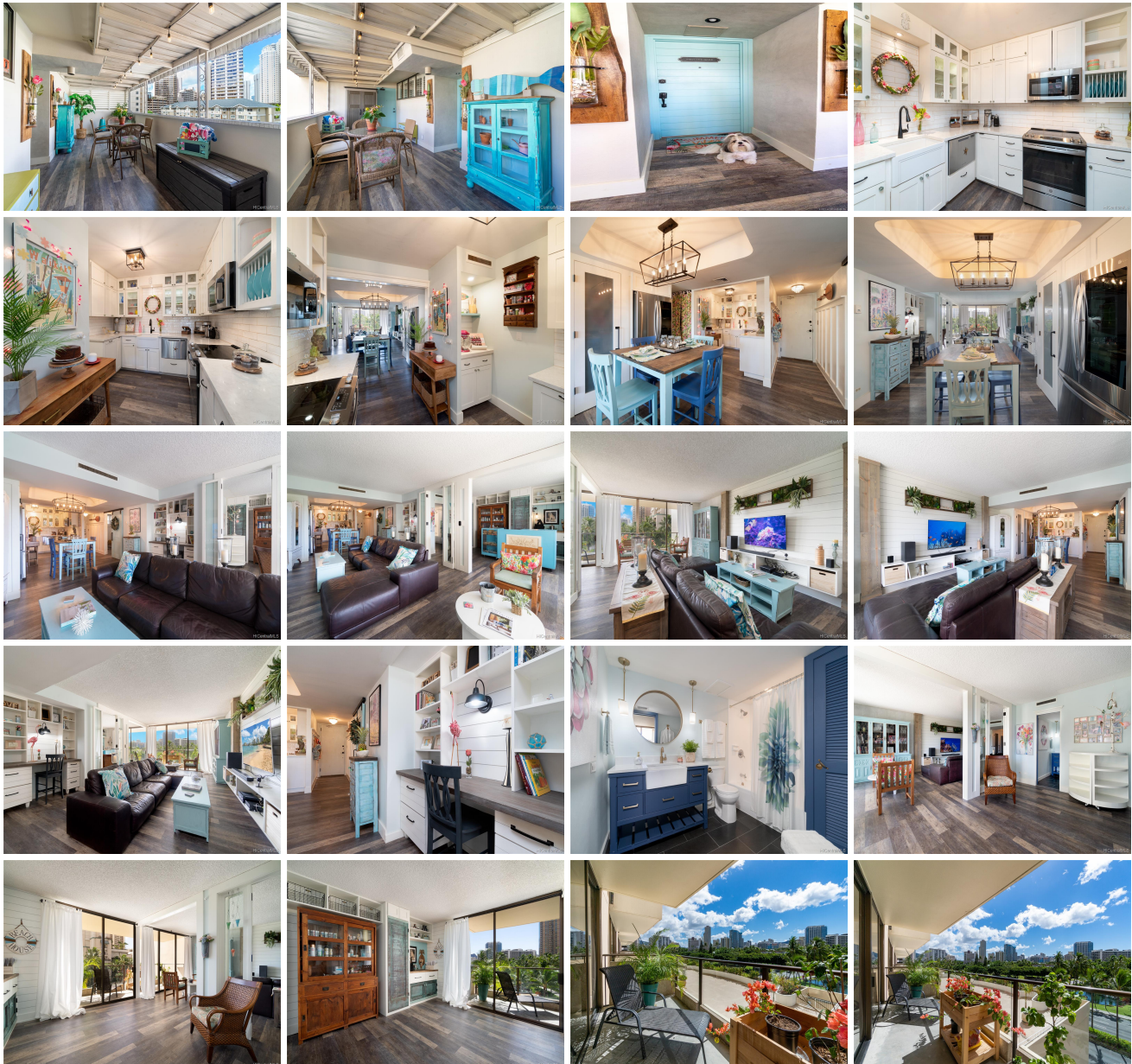


Wailana at Waikiki 1860 Ala Moana Boulevard Unit 510, Honolulu 96815 * Wailana at Waikiki * \$795,000

Sold Price: \$775,000	Sold Date: 12-08-2021	Sold Ratio: 97%
Beds: 2	MLS#: <u>202126478</u>, FS	Year Built: 1970
Bath: 2/0	Status: Sold	Remodeled: 2021
Living Sq. Ft.: 1,188	List Date & DOM: 10-21-2021 & 19	Total Parking: 1
Land Sq. Ft.: 43,124	Condition: Excellent	Assessed Value
Lanai Sq. Ft.: 358	Frontage:	Building: \$494,500
Sq. Ft. Other: 0	Tax/Year: \$110/2021	Land: \$22,100
Total Sq. Ft. 1,546	Neighborhood: Waikiki	Total: \$516,600
Maint./Assoc. \$760 / \$0	Flood Zone : Zone AE - <u>Tool</u>	Stories / CPR: 21+ / No
Parking: Assigned, Covered - 1, Garage, Secured Entry, Street	Frontage:	
Zoning : X2 - Apartment Precinct	View: City, Diamond Head	

Public Remarks: You'll fall in love with this COMPLETELY remodeled unique FEE SIMPLE end unit in the Wailana at Waikiki. Located at the entrance to Waikiki is this one of a kind home. Your private entrance leads you into a spacious lanai overlooking city views. Walk through the front door and be amazed at the quality craftsmanship with shiplap walls, subway tiles from Spain, wainscoting, quartz and onyx countertops, copper vessel sink, barn door - just a few fine features of this amazing condo! A built in desk, copper closet doors, your own "living" wall, too! Sit and watch the hustle and bustle of the Hilton Hawaiian Village from your 2nd lanai with distant views of Diamond Head. BONUS! 2 extra large storage units PLUS the furniture is negotiable. Move right in and call this place - HOME! **Sale Conditions:** None **Schools:** , , * [Request Showing](#), [Photos](#), [History](#), [Maps](#), [Deed](#), [Watch List](#), [Tax Info](#)





Address	Price	Bd & Bth	Living / Avg.	Land Avg.	Lanai	Occ.	FL	DOM
1860 Ala Moana Boulevard 510	\$795,000	2 & 2/0	1,188 \$669	43,124 \$18	358	48%	5	19

Address	Tax Maint. Ass.	Assessed Land	Assessed Building	Assessed Total	Ratio	Year & Remodeled
1860 Ala Moana Boulevard 510	\$110 \$760 \$0	\$22,100	\$494,500	\$516,600	154%	1970 & 2021

Address	Sold Price	Sold Date	Sold Ratio	Original Ratio	Sold Terms
1860 Ala Moana Boulevard 510	\$775,000	12-08-2021	97%	97%	VA

<p>1860 Ala Moana Boulevard 510 - MLS#: 202126478 - You'll fall in love with this COMPLETELY remodeled unique FEE SIMPLE end unit in the Wailana at Waikiki. Located at the entrance to Waikiki is this one of a kind home. Your private entrance leads you into a spacious lanai overlooking city views. Walk through the front door and be amazed at the quality craftsmanship with shiplap walls, subway tiles from Spain, wainscoting, quartz and onyx countertops, copper vessel sink, barn door - just a few fine features of this amazing condo! A built in desk, copper closet doors, your own "living" wall, too! Sit and watch the hustle and bustle of the Hilton Hawaiian Village from your 2nd lanai with distant views of Diamond Head. BONUS! 2 extra large storage units PLUS the furniture is negotiable. Move right in and call this place - HOME! Region: Metro Neighborhood: Waikiki Condition: Excellent Parking: Assigned, Covered - 1, Garage, Secured Entry, Street Total Parking: 1 View: City, Diamond Head Frontage: Pool: Zoning: X2 - Apartment Precinct Sale Conditions: None Schools: , , * Request Showing, Photos, History, Maps, Deed, Watch List, Tax Info</p>					
--	--	--	--	--	--

DOM = Days on Market, Occ. = Occupancy, FL = Floor Number