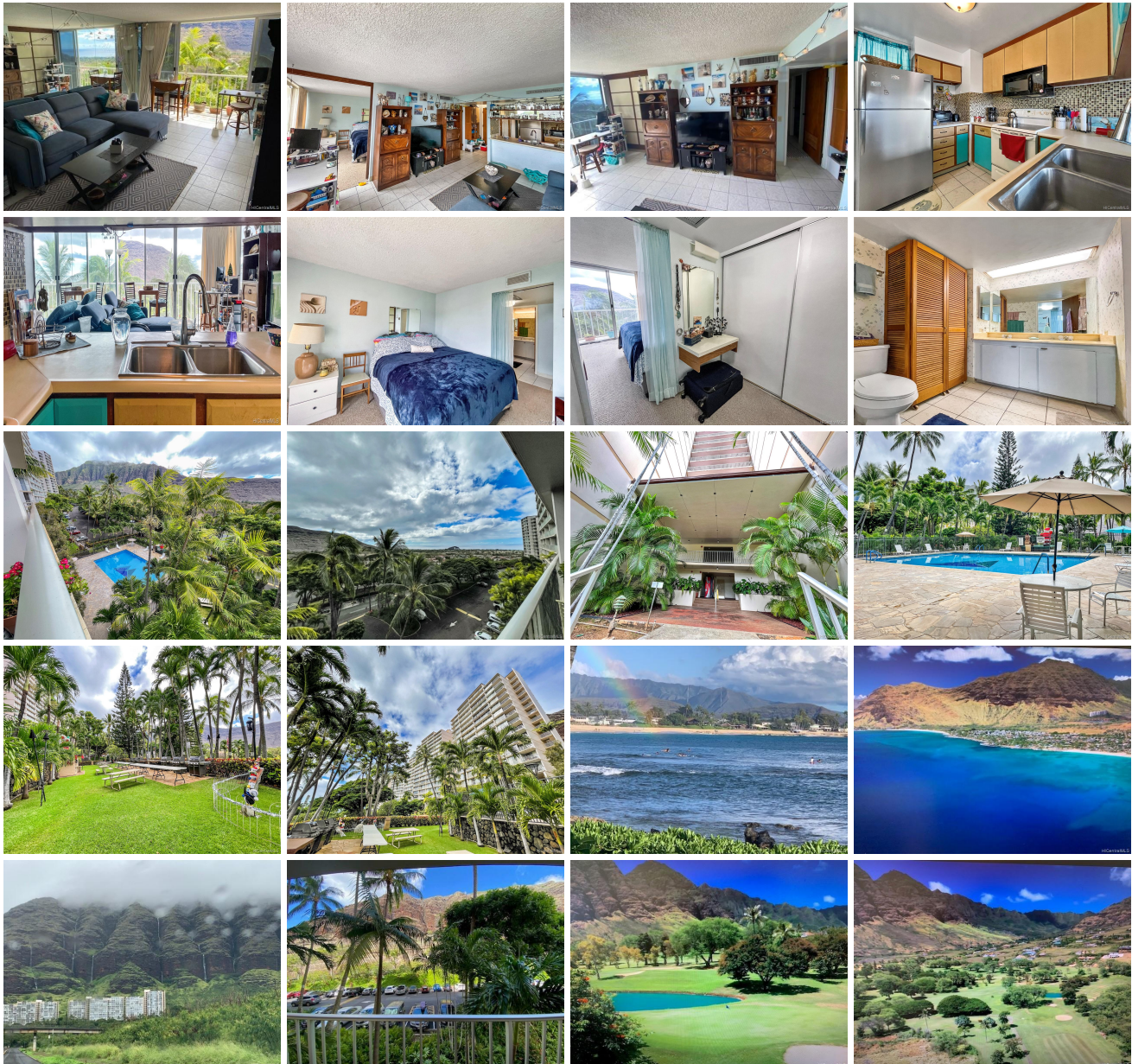


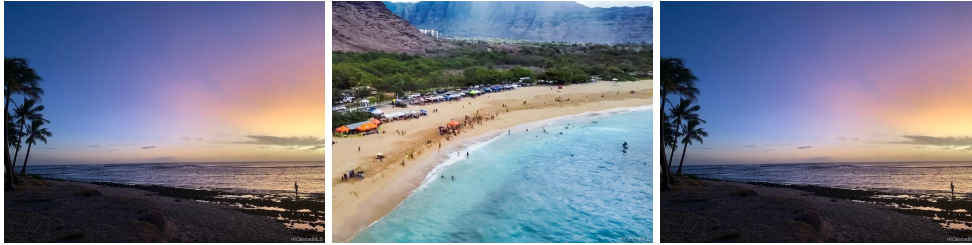
## **Makaha Valley Towers 84-710 Kili Drive Unit 919, Waianae 96792 \* Makaha Valley Towers**

**\* \$199,000**

Sold Price: \$190,000	Sold Date: 03-02-2022	Sold Ratio: 95%
Beds: <b>1</b>	MLS#: <b><u>202128419</u>, FS</b>	Year Built: <b>1970</b>
Bath: <b>1/0</b>	Status: <b>Sold</b>	Remodeled:
Living Sq. Ft.: <b>680</b>	List Date & DOM: <b>11-06-2021 &amp; 33</b>	Total Parking: <b>1</b>
Land Sq. Ft.: <b>612,759</b>	Condition: <b>Average</b>	<a href="#">Assessed Value</a>
Lanai Sq. Ft.: <b>60</b>	Frontage: <b>Other</b>	Building: <b>\$147,600</b>
Sq. Ft. Other: <b>0</b>	Tax/Year: <b>\$25/2020</b>	Land: <b>\$31,600</b>
Total Sq. Ft. <b>740</b>	Neighborhood: <b>Makaha</b>	Total: <b>\$179,200</b>
Maint./Assoc. <b>\$843 / \$0</b>	<a href="#">Flood Zone</a> : <b>Zone D - Tool</b>	Stories / CPR: <b>15-20 / No</b>
Parking: <b>Guest, Open - 1, Unassigned</b>	Frontage: <b>Other</b>	
<a href="#">Zoning</a> : <b>12 - A-2 Medium Density Apartme</b>	View: <b>Coastline, Mountain, Ocean, Sunset</b>	

**Public Remarks:** Beautiful Ocean & Mountain views await you in this one bedroom unit in the Makaha Valley Towers unit. It is ready for your personal touch. Thoughtfully designed with a separate dressing room\* featuring a custom built-in vanity, generous his & hers closets, and direct access to spacious bathroom with double vanity, huge linen closet, newly tiled bath enclosure. The layout allows for wonderful views from both the bedroom and living area. Floor to ceiling windows give a birds eye view from this 9th floor condo. Amenities include heated pool, six propane bbq grills on 14 acres with lush landscaping. Set back in Makaha Valley and just a mile from World Famous Makaha Surfing Beach, this is a unique opportunity to be in a Resort lifestyle at a fraction of the cost. With 24 hour Security and a maintenance fee that includes water, electric, central A/C and internet, make this your primary home or vacation destination!! **Sale Conditions:** None **Schools:** [Makaha](#), [Waianae](#), [Waianae](#) \* [Request Showing](#), [Photos](#), [History](#), [Maps](#), [Deed](#), [Watch List](#), [Tax Info](#)





Address	Price	Bd & Bth	Living / Avg.	Land   Avg.	Lanai	Occ.	FL	DOM
<a href="#">84-710 Kili Drive 919</a>	<a href="#">\$199,000</a>	1 & 1/0	680   \$293	612,759   \$0	60	48%	9	33

Address	Tax   Maint.   Ass.	Assessed Land	Assessed Building	Assessed Total	Ratio	Year & Remodeled
<a href="#">84-710 Kili Drive 919</a>	\$25   \$843   \$0	\$31,600	\$147,600	\$179,200	111%	1970 & NA

Address	Sold Price	Sold Date	Sold Ratio	Original Ratio	Sold Terms
<a href="#">84-710 Kili Drive 919</a>	\$190,000	03-02-2022	95%	95%	Conventional 576

[84-710 Kili Drive 919](#) - MLS#: [202128419](#) - Beautiful Ocean & Mountain views await you in this one bedroom unit in the Makaha Valley Towers unit. It is ready for your personal touch. Thoughtfully designed with a separate dressing room\* featuring a custom built-in vanity, generous his & hers closets, and direct access to spacious bathroom with double vanity, huge linen closet, newly tiled bath enclosure. The layout allows for wonderful views from both the bedroom and living area. Floor to ceiling windows give a birds eye view from this 9th floor condo. Amenities include heated pool, six propane bbq grills on 14 acres with lush landscaping. Set back in Makaha Valley and just a mile from World Famous Makaha Surfing Beach, this is a unique opportunity to be in a Resort lifestyle at a fraction of the cost. With 24 hour Security and a maintenance fee that includes water, electric, central A/C and internet, make this your primary home or vacation destination!! **Region:** Leeward **Neighborhood:** Makaha **Condition:** Average **Parking:** Guest, Open - 1, Unassigned **Total Parking:** 1 **View:** Coastline, Mountain, Ocean, Sunset **Frontage:** Other **Pool:** **Zoning:** 12 - A-2 Medium Density Apartme **Sale Conditions:** None **Schools:** [Makaha](#), [Waianae](#), [Waianae](#) \* [Request Showing](#), [Photos](#), [History](#), [Maps](#), [Deed](#), [Watch List](#), [Tax Info](#)

DOM = Days on Market, Occ. = Occupancy, FL = Floor Number