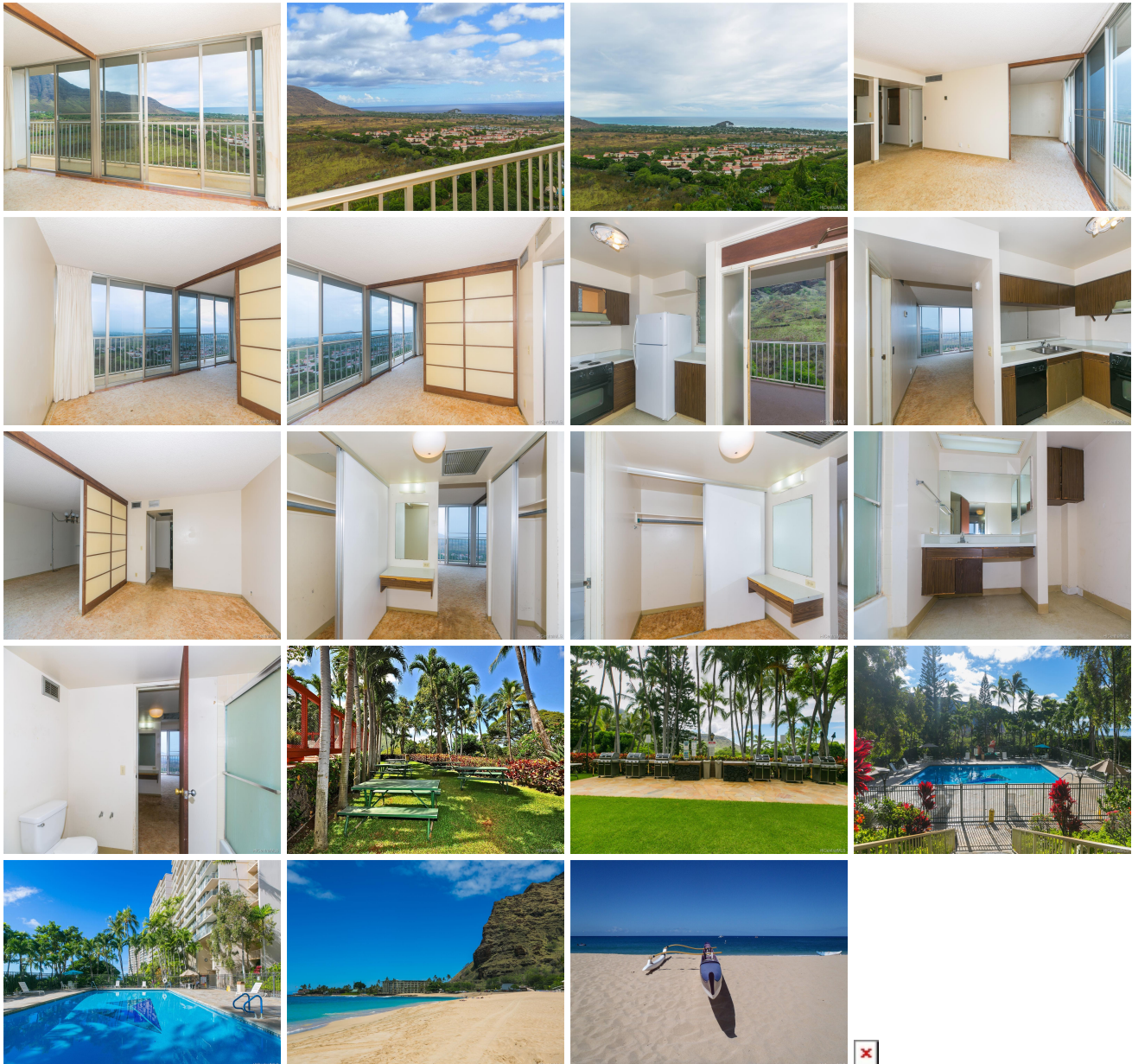


## **Makaha Valley Towers 84-770 Kili Drive Unit 1434, Waianae 96792 \* Makaha Valley Towers**

**\* \$184,900**

Sold Price: \$184,900	Sold Date: 02-09-2022	Sold Ratio: 100%
Beds: <b>1</b>	MLS#: <b><u>202129167</u>, FS</b>	Year Built: <b>1970</b>
Bath: <b>1/0</b>	Status: <b>Sold</b>	Remodeled: <b>1980</b>
Living Sq. Ft.: <b>680</b>	List Date & DOM: <b>12-06-2021 &amp; 10</b>	Total Parking: <b>1</b>
Land Sq. Ft.: <b>0</b>	Condition: <b>Fair</b>	<a href="#">Assessed Value</a>
Lanai Sq. Ft.: <b>60</b>	Frontage: <b>Other</b>	Building: <b>\$151,200</b>
Sq. Ft. Other: <b>0</b>	Tax/Year: <b>\$53/2021</b>	Land: <b>\$31,600</b>
Total Sq. Ft. <b>740</b>	Neighborhood: <b>Makaha</b>	Total: <b>\$182,800</b>
Maint./Assoc. <b>\$843 / \$0</b>	<a href="#">Flood Zone</a> : <b>Zone D - Tool</b>	Stories / CPR: <b>15-20 / No</b>
Parking: <b>Guest, Open - 1, Unassigned</b>	Frontage: <b>Other</b>	
<a href="#">Zoning</a> : <b>12 - A-2 Medium Density Apartme</b>	View: <b>Mountain, Ocean</b>	

**Public Remarks:** Location! Enjoy all of the benefits of the Makaha Valley Towers, with its resort-style living, spacious units and lovely views, from one of the best locations in the complex. Located on the 14th floor in the desirable Core 4 building, unit 1434 is ready for you to renovate into your dream home. Sliding doors and screens, already refurbished for easy use, show off the glorious ocean views from the optimum vantage point the location of this building offers. Why pay \$65,000 more for someone else's remodel in an inferior location when you can invest less and make this Core 4 unit your own? This unit has the coveted floor plan with the bedroom facing the ocean and is near the elevators and laundry. Maintenance fees include everything--Electricity, AC, water, sewer, trash and basic cable. Amenities include BBQ and picnic areas, heated pool, lounge chairs, 24X7 security, on-site management office. Just up the hill from World-Famous Makaha Beach. **Sale Conditions:** None  
**Schools:** [Makaha](#), [Waianae](#), [Waianae](#) \* [Request Showing](#), [Photos](#), [History](#), [Maps](#), [Deed](#), [Watch List](#), [Tax Info](#)



Address	Price	Bd & Bth	Living / Avg.	Land   Avg.	Lanai	Occ.	FL	DOM
<a href="#">84-770 Kili Drive 1434</a>	<a href="#">\$184,900</a>	1 & 1/0	680   \$272	0   \$inf	60	32%	14	10

Address	Tax   Maint.   Ass.	Assessed Land	Assessed Building	Assessed Total	Ratio	Year & Remodeled
<a href="#">84-770 Kili Drive 1434</a>	\$53   \$843   \$0	\$31,600	\$151,200	\$182,800	101%	1970 & 1980

Address	Sold Price	Sold Date	Sold Ratio	Original Ratio	Sold Terms
<a href="#">84-770 Kili Drive 1434</a>	\$184,900	02-09-2022	100%	100%	Conventional

[84-770 Kili Drive 1434](#) - MLS#: [202129167](#) - Location! Enjoy all of the benefits of the Makaha Valley Towers, with its resort-style living, spacious units and lovely views, from one of the best locations in the complex. Located on the 14th floor in the desirable Core 4 building, unit 1434 is ready for you to renovate into your dream home. Sliding doors and screens, already refurbished for easy use, show off the glorious ocean views from the optimum vantage point the location of this building offers. Why pay \$65,000 more for someone else's remodel in an inferior location when you can invest less and make this Core 4 unit your own? This unit has the coveted floor plan with the bedroom facing the ocean and is near the elevators and laundry. Maintenance fees include everything--Electricity, AC, water, sewer, trash and basic cable. Amenities include BBQ and picnic areas, heated pool, lounge chairs, 24X7 security, on-site management office. Just up the hill from World-Famous Makaha Beach. **Region:** Leeward **Neighborhood:** Makaha **Condition:** Fair **Parking:** Guest, Open - 1, Unassigned **Total Parking:** 1 **View:** Mountain, Ocean **Frontage:** Other **Pool:** **Zoning:** 12 - A-2 Medium Density Apartme **Sale Conditions:** None **Schools:** [Makaha](#), [Waianae](#), [Waianae](#) \* [Request Showing](#), [Photos](#), [History](#), [Maps](#), [Deed](#), [Watch List](#), [Tax Info](#)

DOM = Days on Market, Occ. = Occupancy, FL = Floor Number