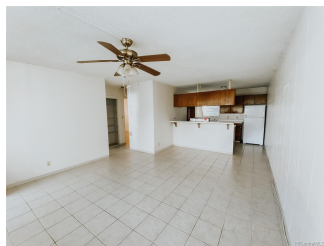


Kunia Palms 94-011 Waipahu Street Unit D111, Waipahu 96797 * Kunia Palms * \$348,000

Sold Price: \$340,000	Sold Date: 01-28-2022	Sold Ratio: 98%
Beds: 2	MLS#: 202129659 , FS	Year Built: 1969
Bath: 1/0	Status: Sold	Remodeled:
Living Sq. Ft.: 705	List Date & DOM: 12-01-2021 & 13	Total Parking: 1
Land Sq. Ft.: 60,853	Condition: Average	Assessed Value
Lanai Sq. Ft.: 0	Frontage:	Building: \$167,300
Sq. Ft. Other: 0	Tax/Year: \$77/2020	Land: \$97,300
Total Sq. Ft. 705	Neighborhood: Waipahu-lower	Total: \$264,600
Maint./Assoc. \$380 / \$0	Flood Zone : Zone D - Tool	Stories / CPR: One / No
Parking: Assigned, Open - 1	Frontage:	
Zoning : 12 - A-2 Medium Density Apartme	View: None	

Public Remarks: Waiting for your own Personal Touch. So Convenient . Ground floor and close to parking. Only Steps away from the community laundry as well. This unit is secured from hot sunset so it stays cool all day long. Your window living room looks out at the green landscape. Ceramic floor throughout. One of the Best Location in the Project. See it today before it's gone and bring your best offer Sold AS IS. **Sale Conditions:** None **Schools:** [Honowai](#), [Waipahu](#), [Waipahu](#) * [Request Showing](#), [Photos](#), [History](#), [Maps](#), [Deed](#), [Watch List](#), [Tax Info](#)



Address	Price	Bd & Bth	Living / Avg.	Land Avg.	Lanai	Occ.	FL	DOM
94-011 Waipahu Street D111	\$348,000	2 & 1/0	705 \$494	60,853 \$6	0	49%	1	13

Address	Tax Maint. Ass.	Assessed Land	Assessed Building	Assessed Total	Ratio	Year & Remodeled
94-011 Waipahu Street D111	\$77 \$380 \$0	\$97,300	\$167,300	\$264,600	132%	1969 & NA

Address	Sold Price	Sold Date	Sold Ratio	Original Ratio	Sold Terms
94-011 Waipahu Street D111	\$340,000	01-28-2022	98%	98%	VA 500

[94-011 Waipahu Street D111](#) - MLS#: [202129659](#) - Waiting for your own Personal Touch. So Convenient . Ground floor and close to parking. Only Steps away from the community laundry as well. This unit is secured from hot sunset so it stays cool all day long. Your window living room looks out at the green landscape. Ceramic floor throughout. One of the Best Location in the Project. See it today before it's gone and bring your best offer Sold AS IS. **Region:** Waipahu **Neighborhood:** Waipahu-lower **Condition:** Average **Parking:** Assigned, Open - 1 **Total Parking:** 1 **View:** None **Frontage:** **Pool:** **Zoning:** 12 - A-2 Medium Density Apartme **Sale Conditions:** None **Schools:** [Honowai](#), [Waipahu](#), [Waipahu](#) * [Request Showing](#), [Photos](#), [History](#), [Maps](#), [Deed](#), [Watch List](#), [Tax Info](#)

DOM = Days on Market, Occ. = Occupancy, FL = Floor Number