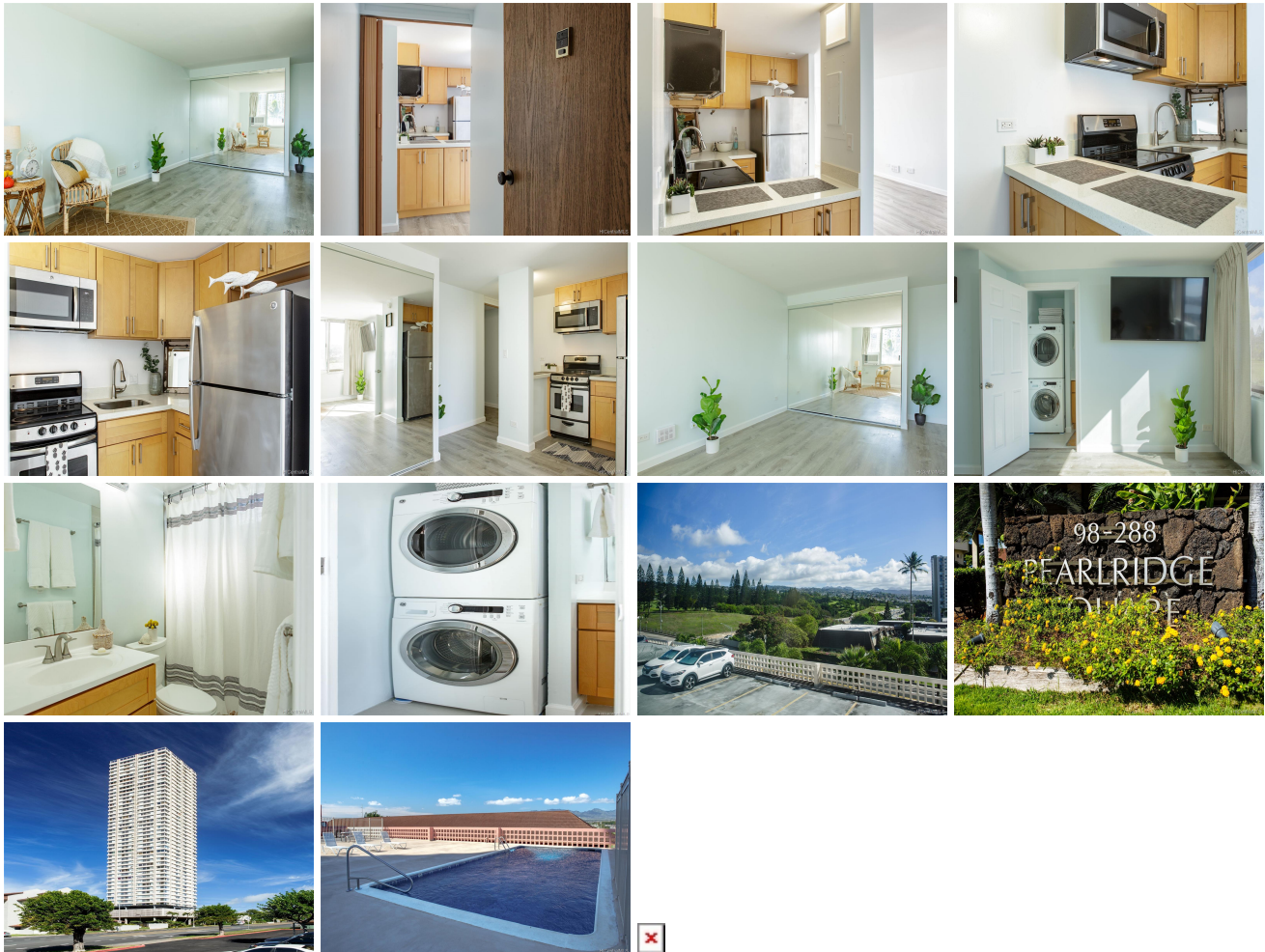


## Pearlridge Square 98-288 Kaonohi Street Unit 405, Aiea 96701 \* Pearlridge Square \*

**\$265,000**

Sold Price: \$265,000	Sold Date: 02-23-2022	Sold Ratio: 100%
Beds: <b>0</b>	MLS#: <b>202132290, FS</b>	Year Built: <b>1980</b>
Bath: <b>1/0</b>	Status: <b>Sold</b>	Remodeled:
Living Sq. Ft.: <b>360</b>	List Date & DOM: <b>12-29-2021 &amp; 13</b>	Total Parking: <b>1</b>
Land Sq. Ft.: <b>50,007</b>	Condition: <b>Excellent</b>	<a href="#">Assessed Value</a>
Lanai Sq. Ft.: <b>0</b>	Frontage:	Building: <b>\$201,400</b>
Sq. Ft. Other: <b>0</b>	Tax/Year: <b>\$34/2021</b>	Land: <b>\$16,300</b>
Total Sq. Ft. <b>360</b>	Neighborhood: <b>Pearlridge</b>	Total: <b>\$217,400</b>
Maint./Assoc. <b>\$323 / \$0</b>	<a href="#">Flood Zone</a> : <b>Zone X - Tool</b>	Stories / CPR: <b>21+ / No</b>
Parking: <b>Assigned, Guest</b>	Frontage:	
<a href="#">Zoning</a> : <b>12 - A-2 Medium Density Apartme</b>	View: <b>City, Mountain, Sunrise, Sunset</b>	

**Public Remarks:** Welcome to Pearlridge Square! This quaint studio has been newly painted and includes wall-to-wall vinyl flooring, in-unit washer/dryer, window A/C, and one secured, uncovered parking stall. Conveniently located near the Pearlridge Shopping Center, public transportation, restaurants, and medical facilities with easy access to H-1, H-2, and H-3. This building offers 24-hour security with an on-site resident manager and keyed access to both the lobby and all three elevators. The amenities include a pool, BBQ area, exercise room, and sauna! Affordable maintenance fees also include both Cable TV and Internet Service. Ample guest parking and stalls for rent available. Easy to show, call today to schedule an appointment! **Sale Conditions:** None **Schools:** [Aiea](#), [Aiea](#), [Pearl City](#) \* [Request Showing](#), [Photos](#), [History](#), [Maps](#), [Deed](#), [Watch List](#), [Tax Info](#)



Address	Price	Bd & Bth	Living / Avg.	Land   Avg.	Lanai	Occ.	FL	DOM
<a href="#">98-288 Kaonohi Street 405</a>	<a href="#">\$265,000</a>	0 & 1/0	360   \$736	50,007   \$5	0	34%	4	13

Address	Tax   Maint.   Ass.	Assessed Land	Assessed Building	Assessed Total	Ratio	Year & Remodeled
<a href="#">98-288 Kaonohi Street 405</a>	\$34   \$323   \$0	\$16,300	\$201,400	\$217,400	122%	1980 & NA

Address	Sold Price	Sold Date	Sold Ratio	Original Ratio	Sold Terms
<a href="#">98-288 Kaonohi Street 405</a>	\$265,000	02-23-2022	100%	100%	USDA Financing

[98-288 Kaonohi Street 405](#) - MLS#: [202132290](#) - Welcome to Pearlridge Square! This quaint studio has been newly painted and includes wall-to-wall vinyl flooring, in-unit washer/dryer, window A/C, and one secured, uncovered parking stall. Conveniently located near the Pearlridge Shopping Center, public transportation, restaurants, and medical facilities with easy access to H-1, H-2, and H-3. This building offers 24-hour security with an on-site resident manager and keyed access to both the lobby and all three elevators. The amenities include a pool, BBQ area, exercise room, and sauna! Affordable maintenance fees also include both Cable TV and Internet Service. Ample guest parking and stalls for rent available. Easy to show, call today to schedule an appointment! **Region:** Pearl City **Neighborhood:** Pearlridge **Condition:** Excellent **Parking:** Assigned, Guest **Total Parking:** 1 **View:** City, Mountain, Sunrise, Sunset **Frontage:** **Pool:** **Zoning:** 12 - A-2 Medium Density Apartme **Sale Conditions:** None **Schools:** [Aiea](#), [Aiea](#), [Pearl City](#) \* [Request Showing](#), [Photos](#), [History](#), [Maps](#), [Deed](#), [Watch List](#), [Tax Info](#)

DOM = Days on Market, Occ. = Occupancy, FL = Floor Number