

Naniwa Gardens 6750 Hawaii Kai Drive Unit 1304, Honolulu 96825 * Naniwa Gardens *

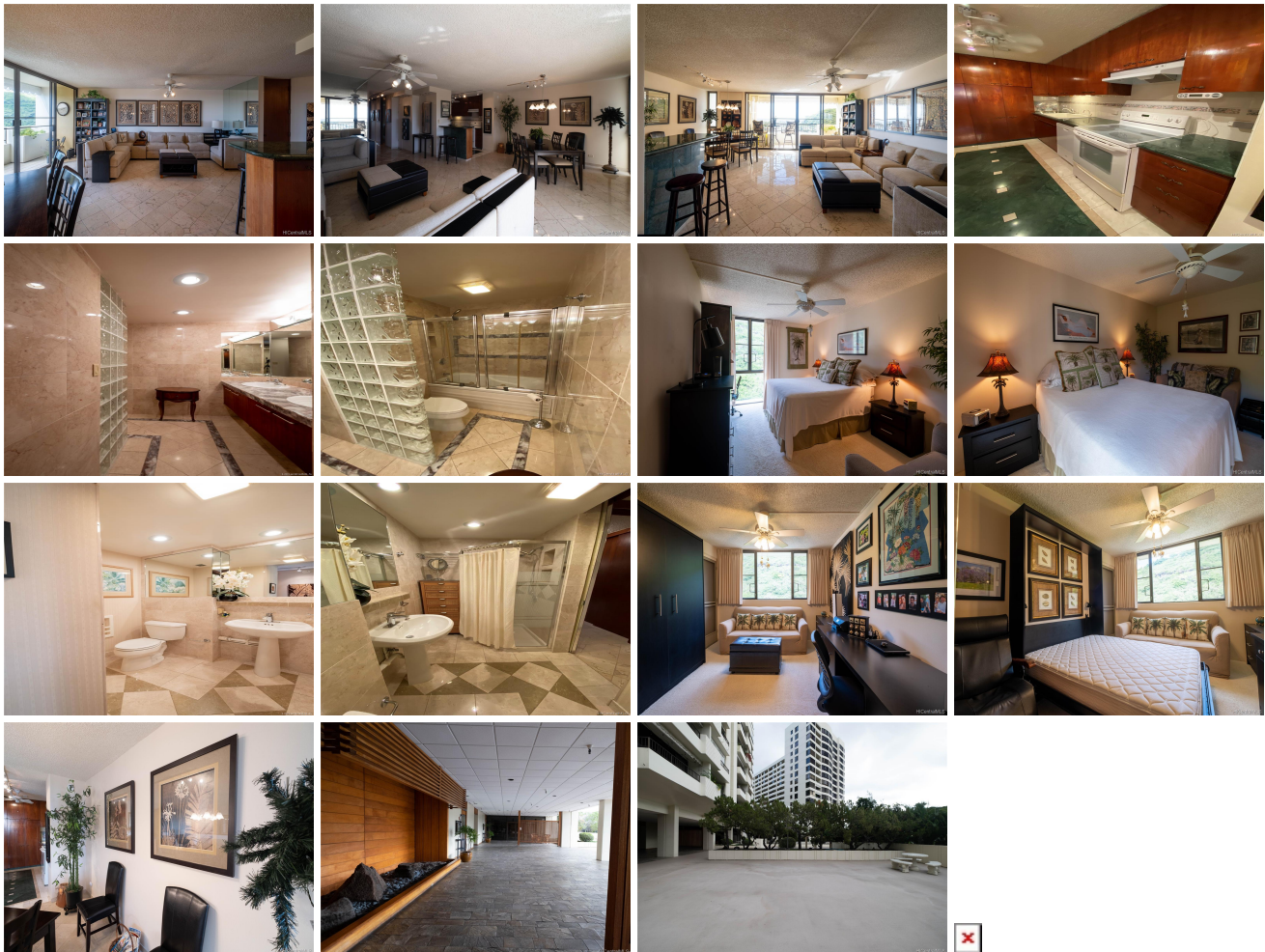
\$725,000

Sold Price: \$741,500	Sold Date: 03-31-2022	Sold Ratio: 102%
Beds: 2	MLS#: 202200129, FS	Year Built: 1974
Bath: 2/0	Status: Sold	Remodeled: 2000
Living Sq. Ft.: 1,238	List Date & DOM: 01-03-2022 & 11	Total Parking: 2
Land Sq. Ft.: 92,086	Condition: Excellent	Assessed Value
Lanai Sq. Ft.: 0	Frontage:	Building: \$436,000
Sq. Ft. Other: 0	Tax/Year: \$165/2020	Land: \$173,900
Total Sq. Ft. 1,238	Neighborhood: Hahaione-lower	Total: \$609,900
Maint./Assoc. \$965 / \$0	Flood Zone : Zone D - Tool	Stories / CPR: 8-14 / No
Parking: Covered - 1	Frontage:	

[Zoning](#): **12 - A-2 Medium Density Apartme**

View: **Coastline, Marina/Canal, Mountain, Ocean, Sunset**

Public Remarks: New listing! This very well-maintained 2 bedrooms, 2 full bath unit is a must-see. Enjoy stunning views of a beautiful sunset, the marina, ocean, coastline, and mountains. Spacious floor plan with marble, travertine, and carpet floors. This building has only two units per floor. Includes two covered parking and storage space. Conveniently located near Costco, shops, bus lines, beaches, and hiking courses. More photos and a virtual tour to come. Furnishings are available for purchase from the tenants. **Sale Conditions:** None **Schools:** [Hahaione](#), [Niu Valley](#), [Kaiser](#) * [Request Showing](#), [Photos](#), [History](#), [Maps](#), [Deed](#), [Watch List](#), [Tax Info](#)



Address	Price	Bd & Bth	Living / Avg.	Land Avg.	Lanai	Occ.	FL	DOM
6750 Hawaii Kai Drive 1304	\$725,000	2 & 2/0	1,238 \$586	92,086 \$8	0	66%	13	11

Address	Tax Maint. Ass.	Assessed Land	Assessed Building	Assessed Total	Ratio	Year & Remodeled
6750 Hawaii Kai Drive 1304	\$165 \$965 \$0	\$173,900	\$436,000	\$609,900	119%	1974 & 2000

Address	Sold Price	Sold Date	Sold Ratio	Original Ratio	Sold Terms
6750 Hawaii Kai Drive 1304	\$741,500	03-31-2022	102%	102%	Cash

[6750 Hawaii Kai Drive 1304](#) - MLS#: [202200129](#) - New listing! This very well-maintained 2 bedrooms, 2 full bath unit is a must-see. Enjoy stunning views of a beautiful sunset, the marina, ocean, coastline, and mountains. Spacious floor plan with marble, travertine, and carpet floors. This building has only two units per floor. Includes two covered parking and storage space. Conveniently located near Costco, shops, bus lines, beaches, and hiking courses. More photos and a virtual tour to come. Furnishings are available for purchase from the tenants. **Region:** Hawaii Kai **Neighborhood:** Hahaione-lower **Condition:** Excellent **Parking:** Covered - 1 **Total Parking:** 2 **View:** Coastline, Marina/Canal, Mountain, Ocean, Sunset **Frontage:** **Pool:** **Zoning:** 12 - A-2 Medium Density Apartme **Sale Conditions:** None **Schools:** [Hahaione](#), [Niu Valley](#), [Kaiser](#)
* [Request Showing](#), [Photos](#), [History](#), [Maps](#), [Deed](#), [Watch List](#), [Tax Info](#)

DOM = Days on Market, Occ. = Occupancy, FL = Floor Number