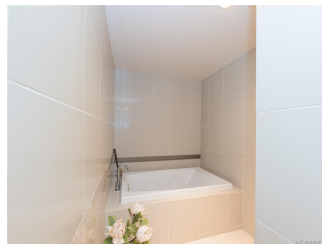
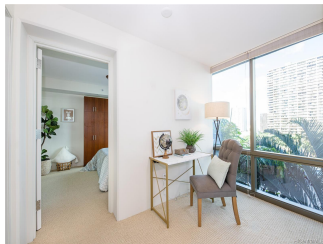
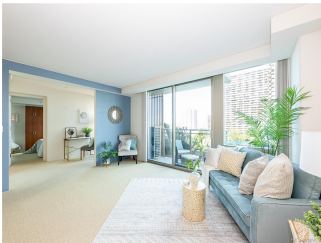


CAPITOL PLACE 1200 Queen Emma Street Unit 911, Honolulu 96813 * CAPITOL PLACE *

\$810,000

Sold Price: \$825,000	Sold Date: 04-11-2022	Sold Ratio: 102%
Beds: 2	MLS#: <u>202200179</u>, FS	Year Built: 2008
Bath: 2/0	Status: Sold	Remodeled:
Living Sq. Ft.: 1,049	List Date & DOM: 02-16-2022 & 5	Total Parking: 2
Land Sq. Ft.: 0	Condition: Above Average, Excellent	Assessed Value
Lanai Sq. Ft.: 34	Frontage:	Building: \$633,700
Sq. Ft. Other: 0	Tax/Year: \$209/2021	Land: \$81,800
Total Sq. Ft. 1,083	Neighborhood: Downtown	Total: \$715,500
Maint./Assoc. \$1,046 / \$0	Flood Zone : Zone X - <u>Tool</u>	Stories / CPR: 21+ / No
Parking: Covered - 2, Guest	Frontage:	
Zoning : 34 - BMX-4 Central Business Mix	View: City	

Public Remarks: Stunning 2 bed, 2 bath luxury condo with unbelievable amenities! From the moment you enter the unit you are greeted with a beautiful open concept kitchen and living space. Kitchen includes high-end stainless steel Viking appliances, a large island, and ample cabinet space with separate pantry. The open and airy living space creates separation between the two bedrooms and features custom window shades and lanai. Immaculate tile work and fixtures in both bathrooms. Split AC system. Walk in closet in the master bedroom with custom additional storage in second bedroom. Washer and dryer in unit. Many amenities include: infinity pool and hot tub overlooking city views, multiple BBQ areas, children's play area, spacious gym, full theater, two music rooms, and an outdoor area for pet relief! 24/7 security and front desk services with FOB security. Two dedicated parking stalls included! Watch the video tour and book your private showing today. **Sale Conditions:** None **Schools:** [Royal](#), [Central](#), [Mckinley](#) * [Request Showing](#), [Photos](#), [History](#), [Maps](#), [Deed](#), [Watch List](#), [Tax Info](#)





Address	Price	Bd & Bth	Living / Avg.	Land Avg.	Lanai	Occ.	FL	DOM
1200 Queen Emma Street 911	\$810,000	2 & 2/0	1,049 \$772	0 \$inf	34	57%	9	5

Address	Tax Maint. Ass.	Assessed Land	Assessed Building	Assessed Total	Ratio	Year & Remodeled
1200 Queen Emma Street 911	\$209 \$1,046 \$0	\$81,800	\$633,700	\$715,500	113%	2008 & NA

Address	Sold Price	Sold Date	Sold Ratio	Original Ratio	Sold Terms
1200 Queen Emma Street 911	\$825,000	04-11-2022	102%	102%	Conventional

[1200 Queen Emma Street 911](#) - MLS#: [202200179](#) - Stunning 2 bed, 2 bath luxury condo with unbelievable amenities! From the moment you enter the unit you are greeted with a beautiful open concept kitchen and living space. Kitchen includes high-end stainless steel Viking appliances, a large island, and ample cabinet space with separate pantry. The open and airy living space creates separation between the two bedrooms and features custom window shades and lanai. Immaculate tile work and fixtures in both bathrooms. Split AC system. Walk in closet in the master bedroom with custom additional storage in second bedroom. Washer and dryer in unit. Many amenities include: infinity pool and hot tub overlooking city views, multiple BBQ areas, children's play area, spacious gym, full theater, two music rooms, and an outdoor area for pet relief! 24/7 security and front desk services with FOB security. Two dedicated parking stalls included! Watch the video tour and book your private showing today. **Region:** Metro **Neighborhood:** Downtown **Condition:** Above Average, Excellent **Parking:** Covered - 2, Guest **Total Parking:** 2 **View:** City **Frontage:** **Pool:** **Zoning:** 34 - BMX-4 Central Business Mix **Sale Conditions:** None **Schools:** [Royal](#), [Central](#), [Mckinley](#) * [Request Showing](#), [Photos](#), [History](#), [Maps](#), [Deed](#), [Watch List](#), [Tax Info](#)

DOM = Days on Market, Occ. = Occupancy, FL = Floor Number