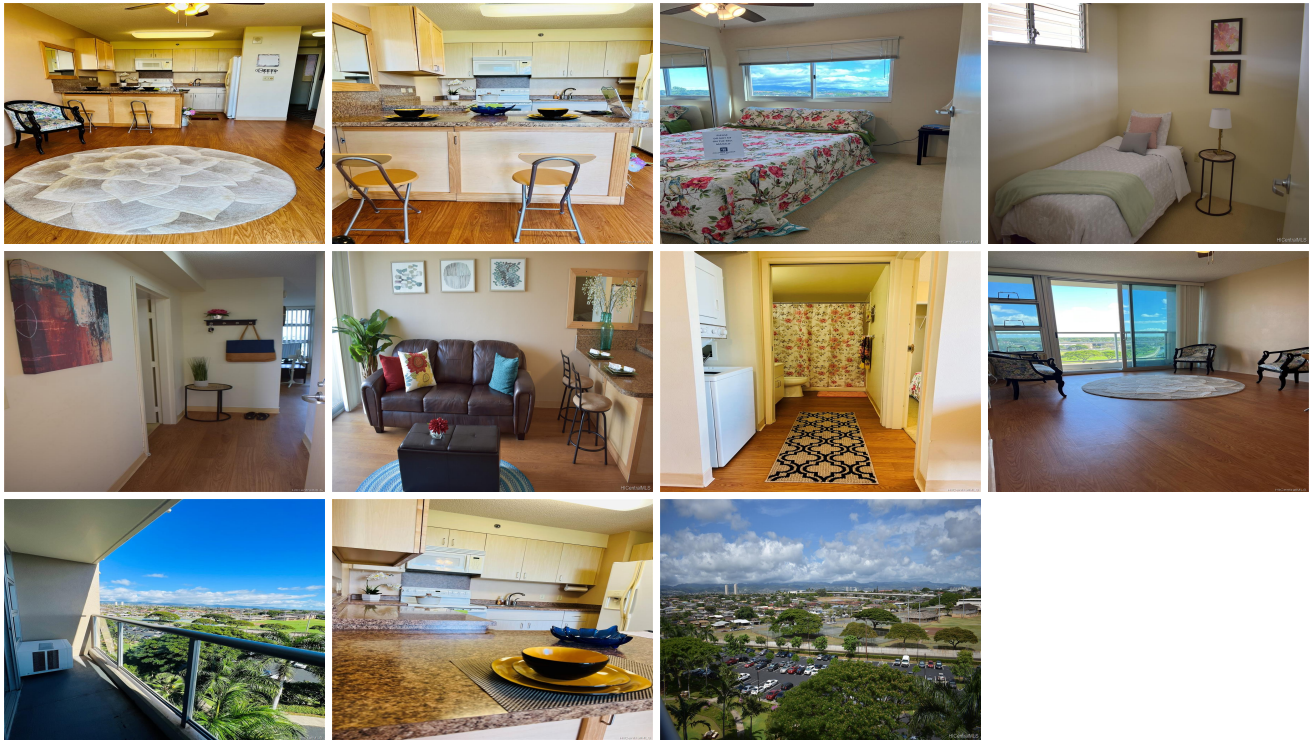


**Plantation Town Apartments 94-979 Kauolu Place Unit 807, Waipahu 96797 \* Plantation Town Apartments \* \$365,000**

|   |   |                                 |
|---|---|---------------------------------|
| Sold Price: \$375,000   | Sold Date: 03-03-2022                             | Sold Ratio: 103%                |
| Beds: <b>2</b>  | MLS#: <b>202201126, FS</b>                        | Year Built: <b>2007</b>         |
| Bath: <b>1/0</b>  | Status: <b>Sold</b>                               | Remodeled:                      |
| Living Sq. Ft.: <b>555</b>                                    | List Date & DOM: <b>01-18-2022 &amp; 12</b>       | Total Parking: <b>1</b>         |
| Land Sq. Ft.: <b>0</b>  | Condition: <b>Above Average</b>                   | <a href="#">Assessed Value</a>  |
| Lanai Sq. Ft.: <b>27</b>                                      | Frontage:   | Building: <b>\$275,000</b>      |
| Sq. Ft. Other: <b>0</b>                                       | Tax/Year: <b>\$64/2021</b>                        | Land: <b>\$43,100</b>           |
| Total Sq. Ft. <b>582</b>                                      | Neighborhood: <b>Waipahu-lower</b>                | Total: <b>\$318,100</b>         |
| Maint./Assoc. <b>\$389 / \$0</b>                              | <a href="#">Flood Zone</a> : <b>Zone X - Tool</b> | Stories / CPR: <b>8-14 / No</b> |
| Parking: <b>Assigned, Open - 1, Secured Entry</b>             | Frontage:   |                                 |
| <a href="#">Zoning</a> : <b>05 - R-5 Residential District</b> | View: <b>Garden</b>                               |                                 |

**Public Remarks:** Rarely available unit in Plantation Town Apartments on Makai side with unobstructed city/garden views. This building is one of two in a well-maintained complex with a resident manager, and security patrol. Enjoy the comforts of an in unit washer and dryer, and for your safety fire sprinkler protection. Kitchen has been upgraded to add more cabinetry and storage. Low maintenance fees, and a recreation room are added bonuses. You will love this well laid out and breezy condo!!! Sellers are doing a 1031 exchange which will not affect the buyer's timeline. **Sale Conditions:** None **Schools:** [August Ahrens](#), [Waipahu](#), [Waipahu](#) \* [Request Showing](#), [Photos](#), [History](#), [Maps](#), [Deed](#), [Watch List](#), [Tax Info](#)



| Address                                 | Price                     | Bd & Bth | Living / Avg. | Land   Avg. | Lanai | Occ. | FL | DOM |
|---|---------------------------|----------|---------------|-------------|-------|------|----|-----|
| <a href="#">94-979 Kauolu Place 807</a> | <a href="#">\$365,000</a> | 2 & 1/0  | 555   \$658   | 0   \$inf   | 27    | 78%  | 8  | 12  |

| Address                                 | Tax   Maint.   Ass. | Assessed Land | Assessed Building | Assessed Total | Ratio | Year & Remodeled |
|---|---------------------|---------------|-------------------|----------------|-------|------------------|
| <a href="#">94-979 Kauolu Place 807</a> | \$64   \$389   \$0  | \$43,100      | \$275,000         | \$318,100      | 115%  | 2007 & NA        |

| Address                                 | Sold Price | Sold Date  | Sold Ratio | Original Ratio | Sold Terms |
|---|------------|------------|------------|----------------|------------|
| <a href="#">94-979 Kauolu Place 807</a> | \$375,000  | 03-03-2022 | 103%       | 103%           | VA         |

[94-979 Kauolu Place 807](#) - MLS#: [202201126](#) - Rarely available unit in Plantation Town Apartments on Makai side with unobstructed city/garden views. This building is one of two in a well-maintained complex with a resident manager, and security patrol. Enjoy the comforts of an in unit washer and dryer, and for your safety fire sprinkler protection. Kitchen has been upgraded to add more cabinetry and storage. Low maintenance fees, and a recreation room are added bonuses. You will love this well laid out and breezy condo!!! Sellers are doing a 1031 exchange which will not affect the buyer's timeline.  
**Region:** Waipahu **Neighborhood:** Waipahu-lower **Condition:** Above Average **Parking:** Assigned, Open - 1, Secured Entry  
**Total Parking:** 1 **View:** Garden **Frontage:** **Pool:** **Zoning:** 05 - R-5 Residential District **Sale Conditions:** None **Schools:**  
[August Ahrens](#), [Waipahu](#), [Waipahu](#) \* [Request Showing](#), [Photos](#), [History](#), [Maps](#), [Deed](#), [Watch List](#), [Tax Info](#)

DOM = Days on Market, Occ. = Occupancy, FL = Floor Number