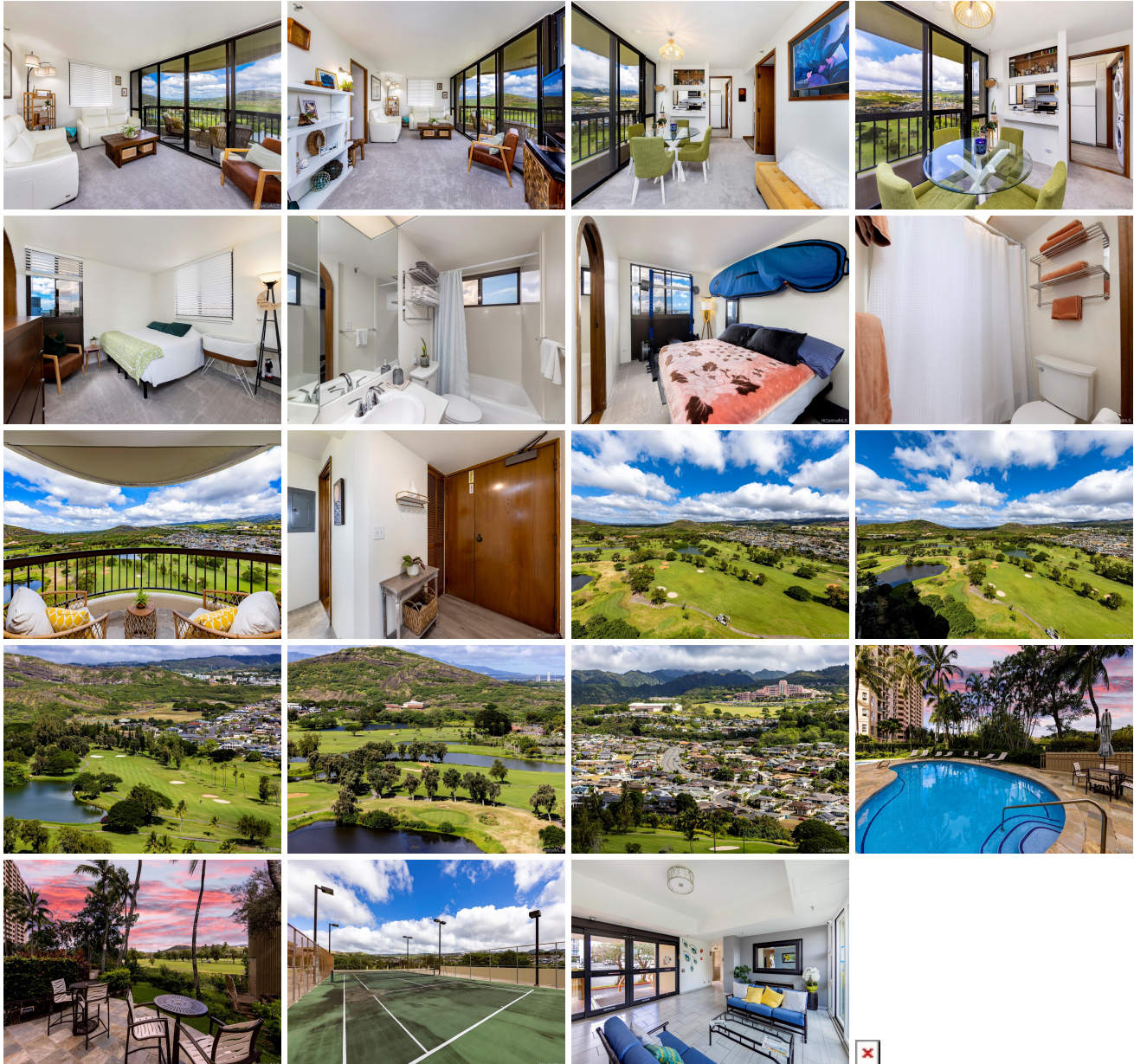


Country Club Vista 3050 Ala Poha Place Unit 20W, Honolulu 96818 * Country Club Vista *

\$655,000

Sold Price: \$700,000	Sold Date: 03-29-2022	Sold Ratio: 107%
Beds: 2	MLS#: <u>202202089</u>, FS	Year Built: 1982
Bath: 2/0	Status: Sold	Remodeled:
Living Sq. Ft.: 980	List Date & DOM: 02-07-2022 & 6	Total Parking: 2
Land Sq. Ft.: 31,102	Condition: Above Average	Assessed Value
Lanai Sq. Ft.: 0	Frontage: Golf Course	Building: \$433,700
Sq. Ft. Other: 0	Tax/Year: \$120/2021	Land: \$79,000
Total Sq. Ft. 980	Neighborhood: Salt Lake	Total: \$512,700
Maint./Assoc. \$1,009 / \$0	Flood Zone : Zone X - Tool	Stories / CPR: 15-20 / No
Parking: Assigned, Covered - 2	Frontage: Golf Course	
Zoning : 12 - A-2 Medium Density Apartme	View: Golf Course	

Public Remarks: Don't miss this high floor, immaculately-kept 2 bedroom, 2 bath, 2 parking condominium unit with breathtaking Honolulu Country Club, Golf Course, & Mountain views. Partial Ocean views are seen from both bedroom suites. The spacious & well designed 980 sq.ft. floor plan offers a stretching main living space with two lanais & Golf Course views throughout, a corner kitchen with pass-through & laundry area, entryway foyer, & multiple storage spaces. Country Club Vista is a well-managed & sought-after building with only two units per floor; amenities include a large swimming pool, full size tennis court, outdoor seating spaces, recently renovated lobby area, new elevators, & new barbecue areas to be completed soon. Positioned just minutes from Downtown Honolulu, Tripler, Ala Moana, nearby schools, shops, restaurants, freeway access & more. **Sale Conditions:** None **Schools:** [Salt Lake](#), [Moanalua](#), [Moanalua](#) * [Request Showing](#), [Photos](#), [History](#), [Maps](#), [Deed](#), [Watch List](#), [Tax Info](#)



Address	Price	Bd & Bth	Living / Avg.	Land Avg.	Lanai	Occ.	FL	DOM
3050 Ala Poha Place 20W	\$655,000	2 & 2/0	980 \$668	31,102 \$21	0	71%	20	6

Address	Tax Maint. Ass.	Assessed Land	Assessed Building	Assessed Total	Ratio	Year & Remodeled
3050 Ala Poha Place 20W	\$120 \$1,009 \$0	\$79,000	\$433,700	\$512,700	128%	1982 & NA

Address	Sold Price	Sold Date	Sold Ratio	Original Ratio	Sold Terms
3050 Ala Poha Place 20W	\$700,000	03-29-2022	107%	107%	VA

[3050 Ala Poha Place 20W](#) - MLS#: [202202089](#) - Don't miss this high floor, immaculately-kept 2 bedroom, 2 bath, 2 parking condominium unit with breathtaking Honolulu Country Club, Golf Course, & Mountain views. Partial Ocean views are seen from both bedroom suites. The spacious & well designed 980 sq.ft. floor plan offers a stretching main living space with two lanais & Golf Course views throughout, a corner kitchen with pass-through & laundry area, entryway foyer, & multiple storage spaces. Country Club Vista is a well-managed & sought-after building with only two units per floor; amenities include a large swimming pool, full size tennis court, outdoor seating spaces, recently renovated lobby area, new elevators, & new barbecue areas to be completed soon. Positioned just minutes from Downtown Honolulu, Tripler, Ala Moana, nearby schools, shops, restaurants, freeway access & more. **Region:** Metro **Neighborhood:** Salt Lake **Condition:** Above Average **Parking:** Assigned, Covered - 2 **Total Parking:** 2 **View:** Golf Course **Frontage:** Golf Course **Pool:** **Zoning:** 12 - A-2 Medium Density Apartme **Sale Conditions:** None **Schools:** [Salt Lake](#), [Moanalua](#), [Moanalua](#) * [Request Showing](#), [Photos](#), [History](#), [Maps](#), [Deed](#), [Watch List](#), [Tax Info](#)

DOM = Days on Market, Occ. = Occupancy, FL = Floor Number