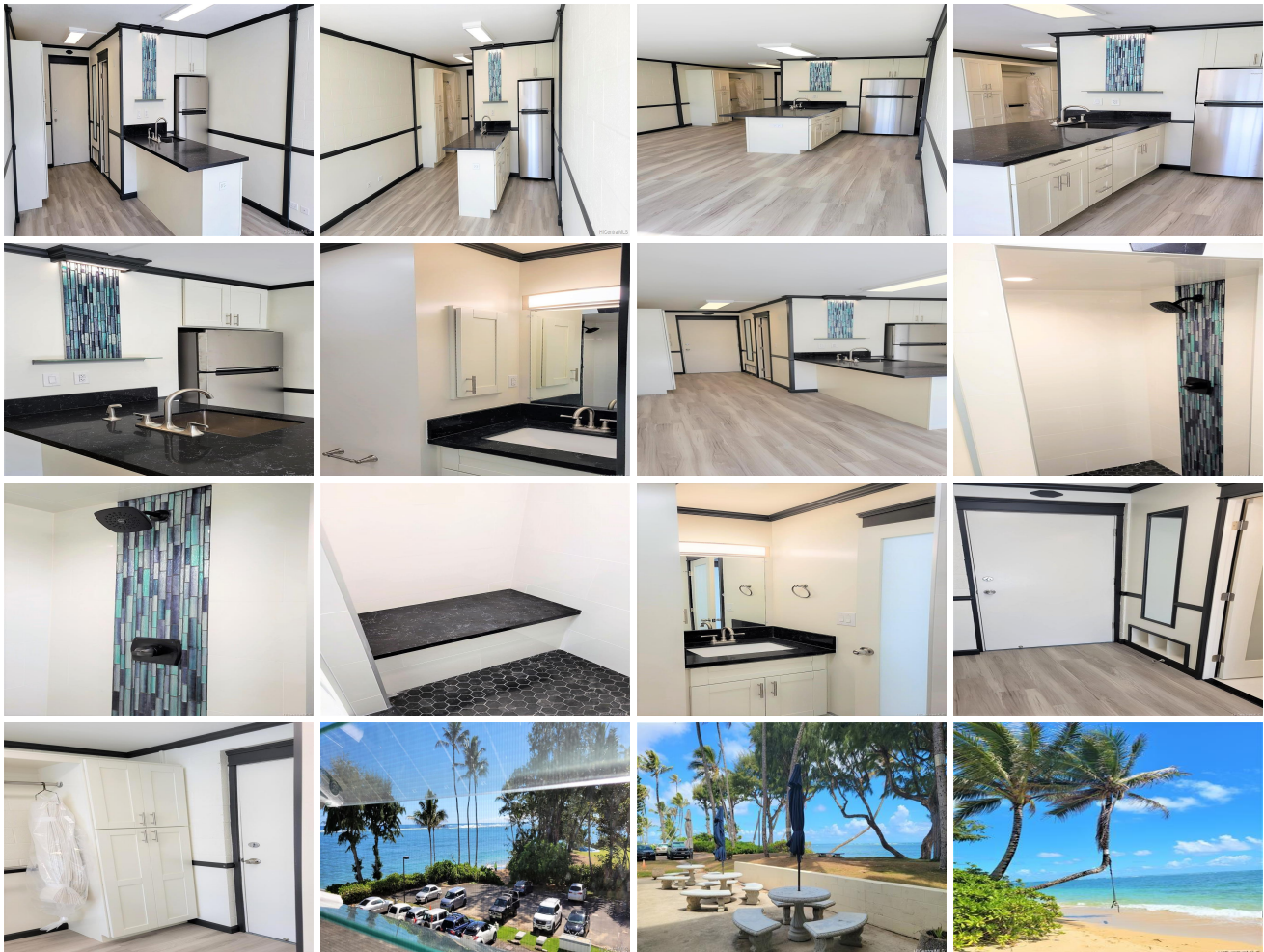


Hanohano Hale 53-549 Kamehameha Highway Unit 315, Hauula 96717 * Hanohano Hale *

\$160,000

Beds: 0	MLS#: 202202190, FS	Year Built: 1973
Bath: 1/0	Status: Expired	Remodeled: 2021
Living Sq. Ft.: 352	List Date & DOM: 02-02-2022 & 49	Total Parking: 1
Land Sq. Ft.: 114,868	Condition: Above Average	Assessed Value
Lanai Sq. Ft.: 0	Frontage: Ocean, Sandy Beach	Building: \$22,200
Sq. Ft. Other: 0	Tax/Year: \$25/2021	Land: \$35,500
Total Sq. Ft. 352	Neighborhood: Punaluu	Total: \$57,700
Maint./Assoc. \$775 / \$0	Flood Zone : Zone AE - Tool	Stories / CPR: 4-7 / No
Parking: Assigned, Open - 1	Frontage: Ocean, Sandy Beach	
Zoning : 12 - A-2 Medium Density Apartme	View: Coastline, Ocean, Sunrise	

Public Remarks: * Property will be relisted shortly - Owners are working on securing remaining lease interest * Oceanfront living in Punaluu! Quality renovations done from top to bottom in this ocean view studio. A perfect weekend getaway retreat, 2nd home, or investment property. In absolute move - in condition, the upgrades include new vinyl plank flooring with vapor barrier, updated plumbing, newly rewired electrical, completely repainted with ornamental chair rails & complete asbestos removal throughout! Kitchen was remodeled with self closing cabinet doors, quartz counter tops & new sink/faucet/fixtures. Bathroom was also reconfigured with a shower area that includes built in shower seat, quartz countertop, new sink/faucet/fixtures. The remodel incorporated a smart closet organizational system for maximizing interior space. This oceanfront building offers a gorgeous white sandy beach area, pool & BBQ area & guest parking stalls. Just minutes away from BYUH & world famous North Shore beaches! Simply paradise... Sandwich lease of \$30.31 till Dec 2023. Unit #311 also offered for sale. **Sale Conditions:** None **Schools:** [Hauula](#), [Kahuku](#), [Kahuku](#) * [Request Showing](#), [Photos](#), [History](#), [Maps](#), [Deed](#), [Watch List](#), [Tax Info](#)





Address	Price	Bd & Bth	Living / Avg.	Land Avg.	Lanai	Occ.	FL	DOM
53-549 Kamehameha Highway 315	\$160,000	0 & 1/0	352 \$455	114,868 \$1	0	6%	3	49

Address	Tax Maint. Ass.	Assessed Land	Assessed Building	Assessed Total	Ratio	Year & Remodeled
53-549 Kamehameha Highway 315	\$25 \$775 \$0	\$35,500	\$22,200	\$57,700	277%	1973 & 2021

[53-549 Kamehameha Highway 315](#) - MLS#: [202202190](#) - * Property will be relisted shortly - Owners are working on securing remaining lease interest * Oceanfront living in Punaluu! Quality renovations done from top to bottom in this ocean view studio. A perfect weekend getaway retreat, 2nd home, or investment property. In absolute move - in condition, the upgrades include new vinyl plank flooring with vapor barrier, updated plumbing, newly rewired electrical, completely repainted with ornamental chair rails & complete asbestos removal throughout! Kitchen was remodeled with self closing cabinet doors, quartz counter tops & new sink/faucet/fixtures. Bathroom was also reconfigured with a shower area that includes built in shower seat, quartz countertop, new sink/faucet/fixtures. The remodel incorporated a smart closet organizational system for maximizing interior space. This oceanfront building offers a gorgeous white sandy beach area, pool & BBQ area & guest parking stalls. Just minutes away from BYUH & world famous North Shore beaches! Simply paradise... Sandwich lease of \$30.31 till Dec 2023. Unit #311 also offered for sale. **Region:** Kaneohe **Neighborhood:** Punaluu **Condition:** Above Average **Parking:** Assigned, Open - 1 **Total Parking:** 1 **View:** Coastline, Ocean, Sunrise **Frontage:** Ocean, Sandy Beach **Pool:** **Zoning:** 12 - A-2 Medium Density Apartme **Sale Conditions:** None **Schools:** [Hauula](#), [Kahuku](#), [Kahuku](#) * [Request Showing](#), [Photos](#), [History](#), [Maps](#), [Deed](#), [Watch List](#), [Tax Info](#)

DOM = Days on Market, Occ. = Occupancy, FL = Floor Number