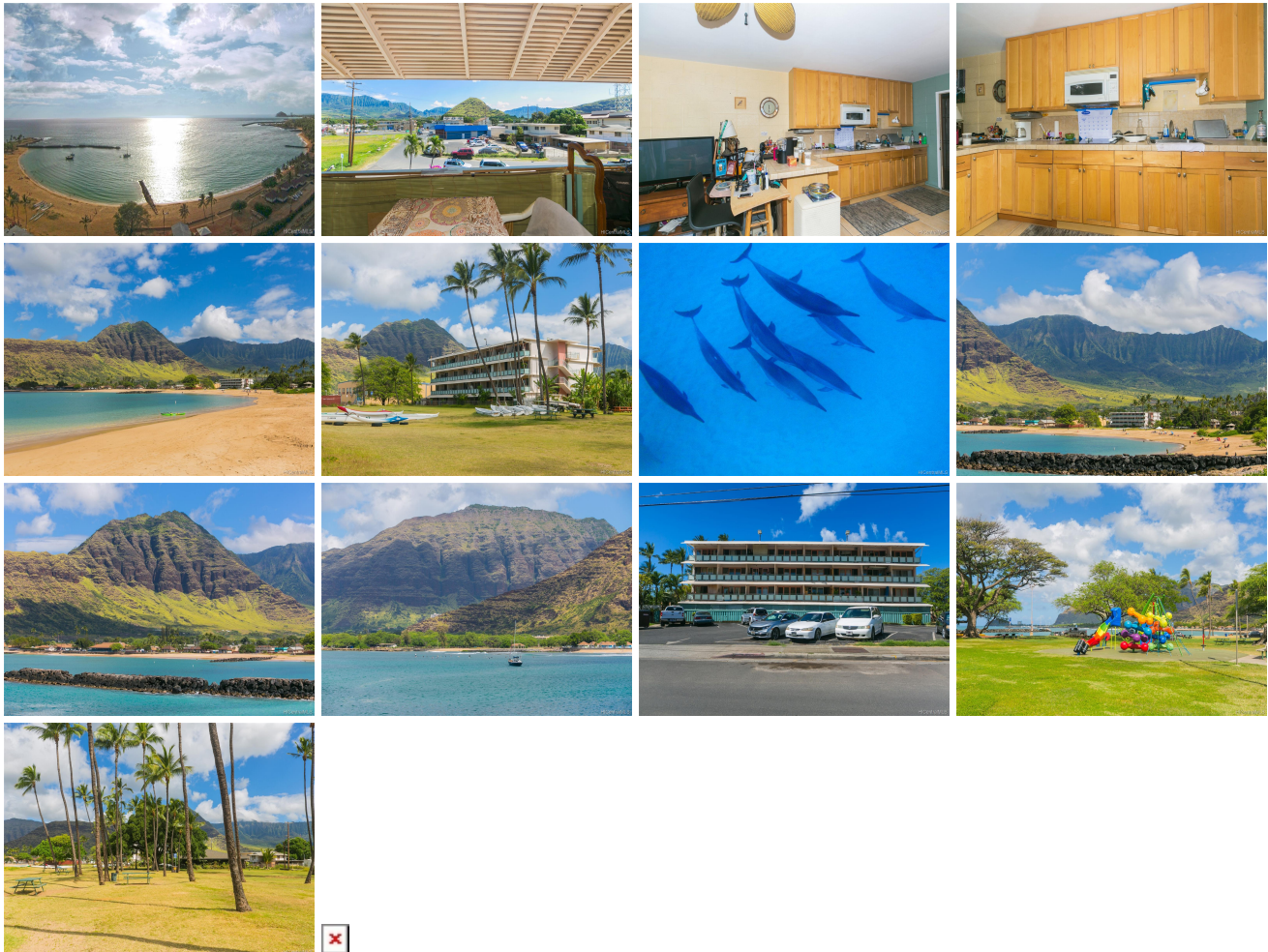


# **Pokai Bay Beach Cabanas 85-933 Bayview Street Unit #310, Waianae 96792 \* Pokai Bay**

## **Beach Cabanas \* \$129,000**

Sold Price: \$129,000	Sold Date: 03-30-2022	Sold Ratio: 100%
Beds: <b>0</b>	MLS#: <b>202203263, FS</b>	Year Built: <b>1961</b>
Bath: <b>1/0</b>	Status: <b>Sold</b>	Remodeled:
Living Sq. Ft.: <b>290</b>	List Date & DOM: <b>02-22-2022 &amp; 7</b>	Total Parking: <b>0</b>
Land Sq. Ft.: <b>0</b>	Condition: <b>Average</b>	<a href="#">Assessed Value</a>
Lanai Sq. Ft.: <b>67</b>	Frontage: <b>Ocean, Sandy Beach</b>	Building: <b>\$114,500</b>
Sq. Ft. Other: <b>0</b>	Tax/Year: <b>\$39/2021</b>	Land: <b>\$19,600</b>
Total Sq. Ft. <b>357</b>	Neighborhood: <b>Waianae</b>	Total: <b>\$134,100</b>
Maint./Assoc. <b>\$343 / \$0</b>	<a href="#">Flood Zone</a> : <b>Zone AE - Tool</b>	Stories / CPR: <b>Three / No</b>
Parking: <b>Open - 1, Street, Unassigned</b>	Frontage: <b>Ocean, Sandy Beach</b>	
<a href="#">Zoning</a> : <b>12 - A-2 Medium Density Apartme</b>	View: <b>Mountain</b>	

**Public Remarks:** Live your dream of owning a studio unit right on the white sandy beach of Pokai Bay, known for its year-around water recreation activities like paddle boarding, swimming, snorkeling and fishing. This unit has a large lanai facing the Waianae Mountain Range for beautiful mountain and rainbow views. Unlike many units, unit 310 has been remodeled to open up the floor plan, add more cabinets and a cooktop with microwave hood. Super affordable in price and maintenance fees, this unit is perfect for an owner-occupant, or it can be your getaway place, or an investment property--especially for a 1031 investor. Mosey downstairs, and you'll be on the sand. Conveniently located near the Waianae Store and Army Recreation Center where you can enjoy the Beach House by 604 Restaurant. Parking stalls are open, unassigned, with plenty of street parking. **Sale Conditions:** None **Schools:** , , \* [Request Showing](#), [Photos](#), [History](#), [Maps](#), [Deed](#), [Watch List](#), [Tax Info](#)



Address	Price	Bd & Bth	Living / Avg.	Land   Avg.	Lanai	Occ.	FL	DOM
<a href="#">85-933 Bayview Street #310</a>	<a href="#">\$129,000</a>	0 & 1/0	290   \$445	0   \$inf	67	31%	3	7

Address	Tax   Maint.   Ass.	Assessed Land	Assessed Building	Assessed Total	Ratio	Year & Remodeled
---------	---------------------	---------------	-------------------	----------------	-------	------------------

<a href="#">85-933 Bayview Street #310</a>	\$39   \$343   \$0	\$19,600	\$114,500	\$134,100	96%	1961 & NA
--	--------------------	----------	-----------	-----------	-----	-----------

Address	Sold Price	Sold Date	Sold Ratio	Original Ratio	Sold Terms
<a href="#">85-933 Bayview Street #310</a>	\$129,000	03-30-2022	100%	100%	Cash

<a href="#">85-933 Bayview Street #310</a> - MLS#: <a href="#">202203263</a> - Live your dream of owning a studio unit right on the white sandy beach of Pokai Bay, known for its year-around water recreation activities like paddle boarding, swimming, snorkeling and fishing. This unit has a large lanai facing the Waianae Mountain Range for beautiful mountain and rainbow views. Unlike many units, unit 310 has been remodeled to open up the floor plan, add more cabinets and a cooktop with microwave hood. Super affordable in price and maintenance fees, this unit is perfect for an owner-occupant, or it can be your getaway place, or an investment property--especially for a 1031 investor. Mosey downstairs, and you'll be on the sand. Conveniently located near the Waianae Store and Army Recreation Center where you can enjoy the Beach House by 604 Restaurant. Parking stalls are open, unassigned, with plenty of street parking. <b>Region:</b> Leeward <b>Neighborhood:</b> Waianae <b>Condition:</b> Average <b>Parking:</b> Open - 1, Street, Unassigned <b>Total Parking:</b> 0 <b>View:</b> Mountain <b>Frontage:</b> Ocean,Sandy Beach <b>Pool:</b> <b>Zoning:</b> 12 - A-2 Medium Density Apartme <b>Sale Conditions:</b> None <b>Schools:</b> , , * <a href="#">Request Showing</a> , <a href="#">Photos</a> , <a href="#">History</a> , <a href="#">Maps</a> , <a href="#">Deed</a> , <a href="#">Watch List</a> , <a href="#">Tax Info</a>
---

DOM = Days on Market, Occ. = Occupancy, FL = Floor Number