

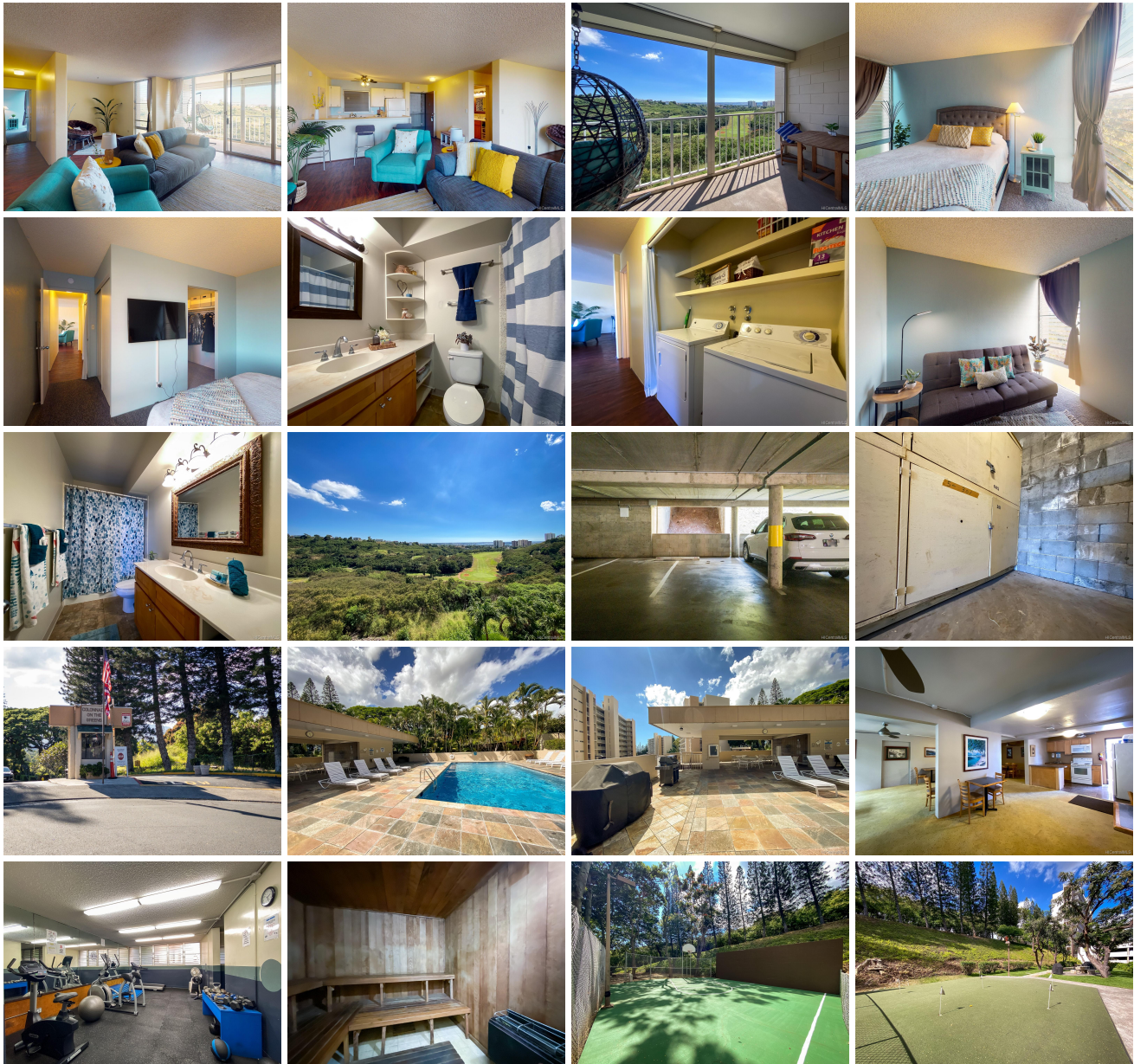
Colonnade on the Greens 98-719 Iho Place Unit 5301, Aiea 96701 * Colonnade on the Greens * \$468,000

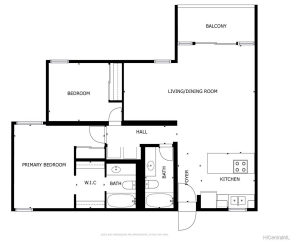
Sold Price: \$460,000	Sold Date: 04-08-2022	Sold Ratio: 98%
Beds: 2	MLS#: <u>202204330</u>, FS	Year Built: 1976
Bath: 2/0	Status: Sold	Remodeled:
Living Sq. Ft.: 1,000	List Date & DOM: 03-07-2022 & 10	Total Parking: 1
Land Sq. Ft.: 298,212	Condition: Above Average	Assessed Value
Lanai Sq. Ft.: 91	Frontage: Golf Course	Building: \$298,300
Sq. Ft. Other: 0	Tax/Year: \$124/2021	Land: \$127,300
Total Sq. Ft. 1,091	Neighborhood: Pearlridge	Total: \$425,600
Maint./Assoc. \$915 / \$0	Flood Zone : Zone D - Tool	Stories / CPR: 8-14 / No
Parking: Assigned, Covered - 1, Guest, Secured Entry, Street	Frontage: Golf Course	

Zoning: 12 - A-2 Medium Density Apartme

View: **Garden, Golf Course, Mountain, Ocean**

Public Remarks: Come and see this rarely available END UNIT with stunning UNOBSTRUCTED golf course/garden views. Perfect for everyone from first-time buyers to families, this 2 bed, 2 bath, 1 parking unit is move-in ready and has a den/dining area which makes this floor plan so popular. Perfect for working from home, kids play area, or pet play space (pets okay with approval). Enjoy the wonderful amenities which include lots of guest parking, EV charging stalls, pool, BBQ, gym, sauna, tennis court, putting green, dog park, and more. Close to restaurants, shopping, medical services, and easy access to get on and off the freeway. The maintenance fee includes cable, internet, hot water, sewer, and water. Welcome to your new home! **Sale Conditions:** None **Schools:** , , * [Request Showing](#), [Photos](#), [History](#), [Maps](#), [Deed](#), [Watch List](#), [Tax Info](#)





Address	Price	Bd & Bth	Living / Avg.	Land Avg.	Lanai	Occ.	FL	DOM
98-719 Iho Place 5301	\$468,000	2 & 2/0	1,000 \$468	298,212 \$2	91	64%	1	10

Address	Tax Maint. Ass.	Assessed Land	Assessed Building	Assessed Total	Ratio	Year & Remodeled
98-719 Iho Place 5301	\$124 \$915 \$0	\$127,300	\$298,300	\$425,600	110%	1976 & NA

Address	Sold Price	Sold Date	Sold Ratio	Original Ratio	Sold Terms
98-719 Iho Place 5301	\$460,000	04-08-2022	98%	98%	Cash

[98-719 Iho Place 5301](#) - MLS#: [202204330](#) - Come and see this rarely available END UNIT with stunning UNOBSTRUCTED golf course/garden views. Perfect for everyone from first-time buyers to families, this 2 bed, 2 bath, 1 parking unit is move-in ready and has a den/dining area which makes this floor plan so popular. Perfect for working from home, kids play area, or pet play space (pets okay with approval). Enjoy the wonderful amenities which include lots of guest parking, EV charging stalls, pool, BBQ, gym, sauna, tennis court, putting green, dog park, and more. Close to restaurants, shopping, medical services, and easy access to get on and off the freeway. The maintenance fee includes cable, internet, hot water, sewer, and water. Welcome to your new home! **Region:** Pearl City **Neighborhood:** Pearlridge **Condition:** Above Average **Parking:** Assigned, Covered - 1, Guest, Secured Entry, Street **Total Parking:** 1 **View:** Garden, Golf Course, Mountain, Ocean **Frontage:** Golf Course **Pool:** **Zoning:** 12 - A-2 Medium Density Apartme **Sale Conditions:** None **Schools:** , , * [Request Showing](#), [Photos](#), [History](#), [Maps](#), [Deed](#), [Watch List](#), [Tax Info](#)

DOM = Days on Market, Occ. = Occupancy, FL = Floor Number