

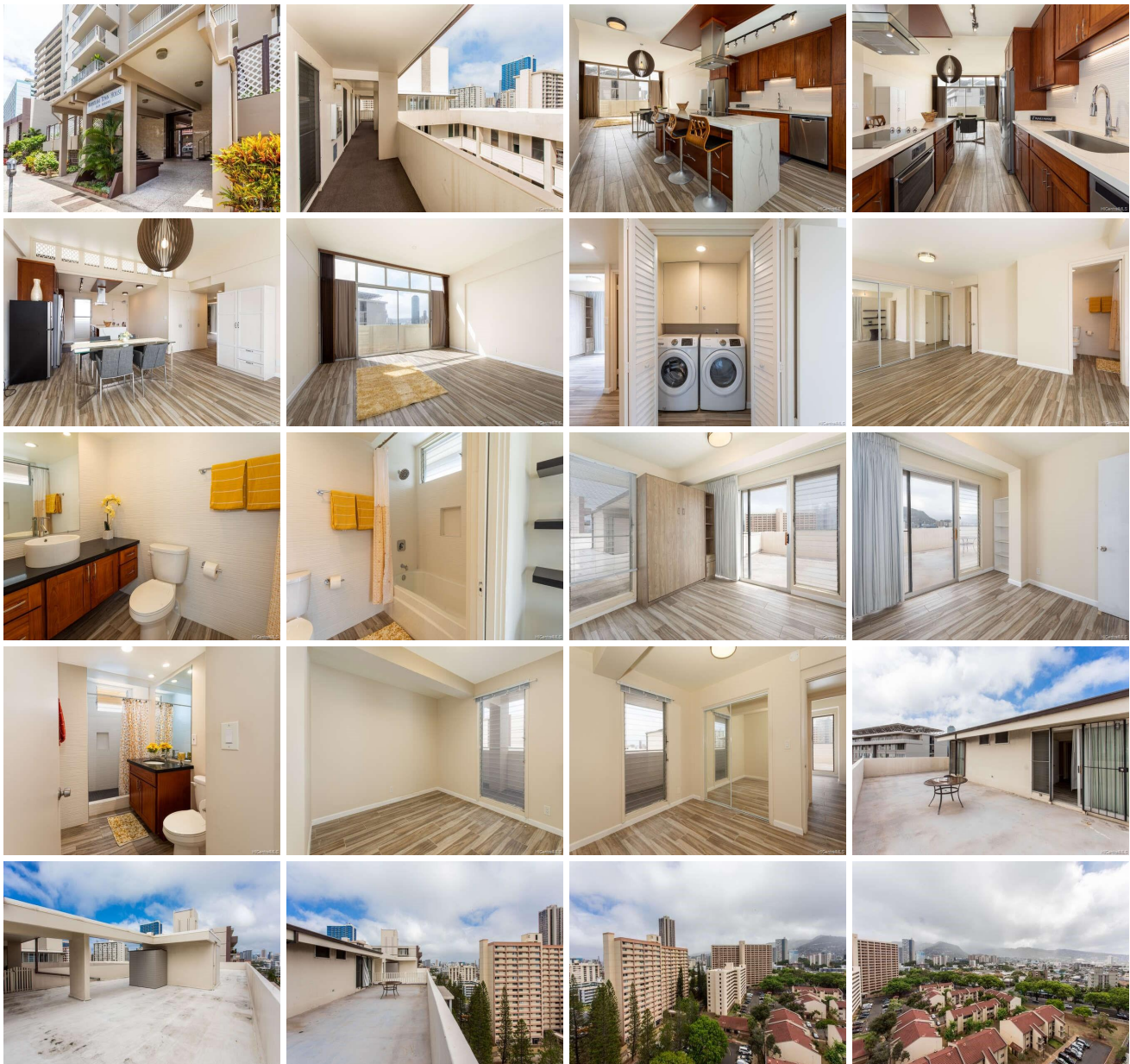
## **Kapiolani Townhouse 1624 Kanunu Street Unit PHB, Honolulu 96814 \* Kapiolani**

**Townhouse \* \$809,000 \* Originally \$825,000**

Beds: <b>3</b>	MLS#: <b>202208440, FS</b>	Year Built: <b>1965</b>
Bath: <b>2/0</b>	Status: <b>Cancelled</b>	Remodeled: <b>2018</b>
Living Sq. Ft.: <b>1,941</b>	List Date & DOM: <b>05-03-2022 &amp; 68</b>	Total Parking: <b>1</b>
Land Sq. Ft.: <b>23,697</b>	Condition: <b>Above Average</b>	<a href="#">Assessed Value</a>
Lanai Sq. Ft.: <b>638</b>	Frontage:	Building: <b>\$483,600</b>
Sq. Ft. Other: <b>0</b>	Tax/Year: <b>\$166/2022</b>	Land: <b>\$101,200</b>
Total Sq. Ft. <b>2,579</b>	Neighborhood: <b>Pawaa</b>	Total: <b>\$584,800</b>
Maint./Assoc. <b>\$1,123 / \$0</b>	<a href="#">Flood Zone</a> : <b>Zone X - Tool</b>	Stories / CPR: <b>8-14 / No</b>
Parking: <b>Assigned, Covered - 1</b>	Frontage:	
<a href="#">Zoning</a> : <b>13 - A-3 High Density Apartment</b>	View: <b>City, Diamond Head, Mountain</b>	

**Public Remarks:** Back on the market, it wont last. Rare opportunity. The lowest price three bedroom in the area. Rarely available! Elegant and gorgeous Penthouse unit (only one neighbor on the floor). 10 feet high ceilings. Spacious with 1,300 SF interior and open lanai. It was completely renovated in year 2018. Over \$100K in renovation work, including full removal of popcorn ceiling. Bright and breezy with gorgeous Diamond Head, mountain and Waikiki views. Open kitchen with beautiful marble waterfall count-top and chef's range hood. Washer/Dryer in unit. Excellent and super convenient location. Near bus lines. Walking distance to Ala Moana shopping, Don Quijote, Walmart, Palama Market, banks, great restaurants and shopping.

**Sale Conditions:** None **Schools:** [Kaahumanu](#), [Washington](#), [Mckinley](#) \* [Request Showing](#), [Photos](#), [History](#), [Maps](#), [Deed](#), [Watch List](#), [Tax Info](#)





Address	Price	Bd & Bth	Living / Avg.	Land   Avg.	Lanai	Occ.	FL	DOM
<a href="#">1624 Kanunu Street PHB</a>	<b>\$809,000</b>	3 & 2/0	1,941   \$417	23,697   \$34	638	62%	13	68

Address	Tax   Maint.   Ass.	Assessed Land	Assessed Building	Assessed Total	Ratio	Year & Remodeled
<a href="#">1624 Kanunu Street PHB</a>	\$166   \$1,123   \$0	\$101,200	\$483,600	\$584,800	138%	1965 & 2018

[1624 Kanunu Street PHB](#) - MLS#: [202208440](#) - Original price was \$825,000 - Back on the market, it wont last. Rare opportunity. The lowest price three bedroom in the area. Rarely available! Elegant and gorgeous Penthouse unit (only one neighbor on the floor). 10 feet high ceilings. Spacious with 1,300 SF interior and open lanai. It was completely renovated in year 2018. Over \$100K in renovation work, including full removal of popcorn ceiling. Bright and breezy with gorgeous Diamond Head, mountain and Waikiki views. Open kitchen with beautiful marble waterfall count-top and chef's range hood. Washer/Dryer in unit. Excellent and super convenient location. Near bus lines. Walking distance to Ala Moana shopping, Don Quijote, Walmart, Palama Market, banks, great restaurants and shopping. **Region:** Metro **Neighborhood:** Pawaa **Condition:** Above Average **Parking:** Assigned, Covered - 1 **Total Parking:** 1 **View:** City, Diamond Head, Mountain **Frontage:** **Pool:** **Zoning:** 13 - A-3 High Density Apartment **Sale Conditions:** None **Schools:** [Kaahumanu](#), [Washington](#), [Mckinley](#) \* [Request Showing](#), [Photos](#), [History](#), [Maps](#), [Deed](#), [Watch List](#), [Tax Info](#)

DOM = Days on Market, Occ. = Occupancy, FL = Floor Number