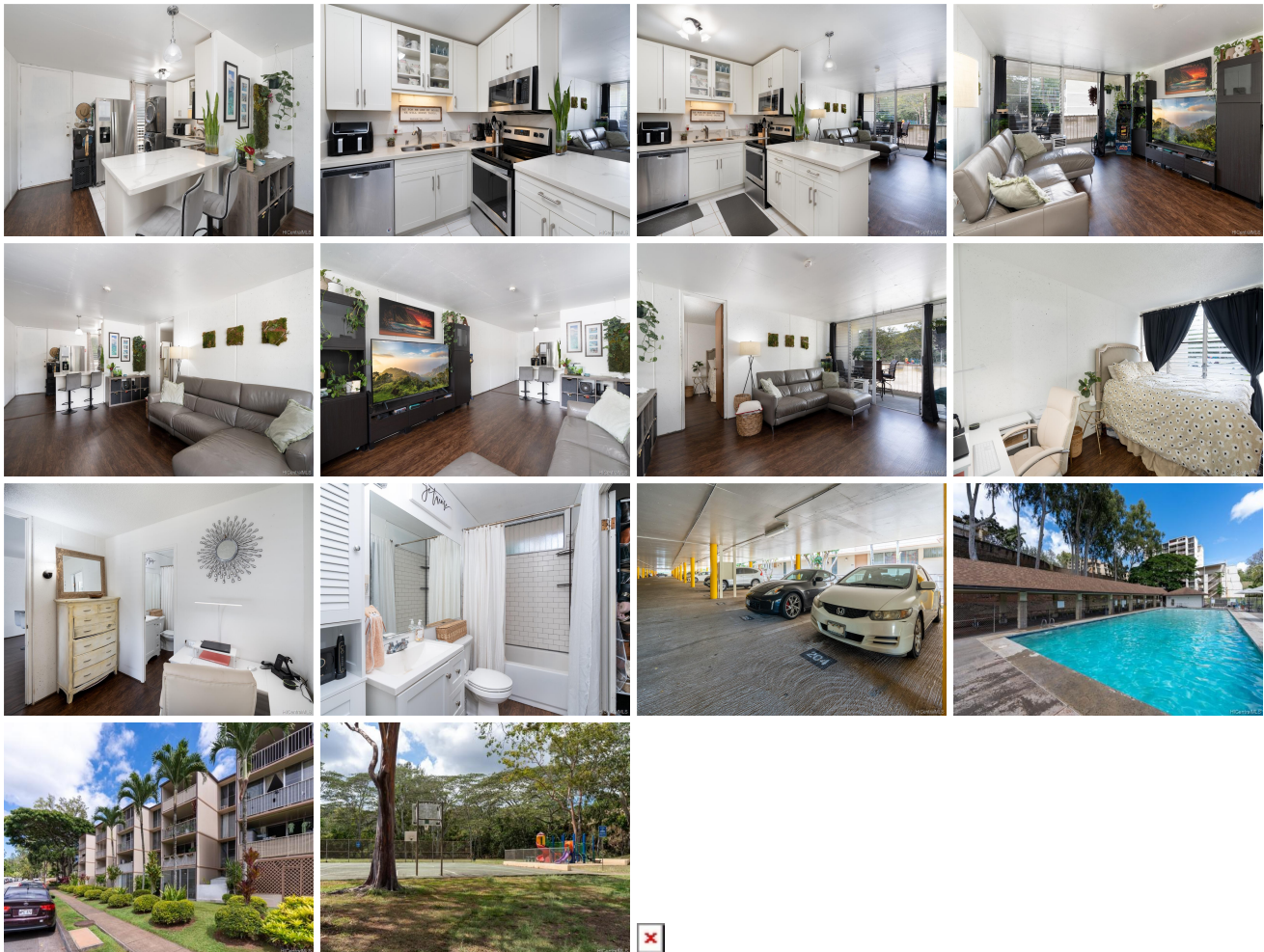


**Cathedral Pt-Melemanu 95-055 Waikalani Drive Unit H204, Mililani 96789 \* Cathedral Pt-Melemanu \* \$385,000**

Beds: <b>1</b>	MLS#: <b>202220398, FS</b>	Year Built: <b>1973</b>
Bath: <b>1/0</b>	Status: <b>Cancelled</b>	Remodeled: <b>2017</b>
Living Sq. Ft.: <b>607</b>	List Date & DOM: <b>09-28-2022 &amp; 6</b>	Total Parking: <b>1</b>
Land Sq. Ft.: <b>182,124</b>	Condition: <b>Excellent</b>	<a href="#">Assessed Value</a>
Lanai Sq. Ft.: <b>97</b>	Frontage:	Building: <b>\$172,300</b>
Sq. Ft. Other: <b>0</b>	Tax/Year: <b>\$71/2022</b>	Land: <b>\$72,700</b>
Total Sq. Ft. <b>704</b>	Neighborhood: <b>Waipio Acres-waikalani Woodlands</b>	Total: <b>\$245,000</b>
Maint./Assoc. <b>\$510 / \$0</b>	<a href="#">Flood Zone</a> : <b>Zone D - Tool</b>	Stories / CPR: <b>One / No</b>
Parking: <b>Assigned, Covered - 1, Guest, Street, Unassigned</b>	Frontage:	
<a href="#">Zoning</a> : <b>11 - A-1 Low Density Apartment</b>	View: <b>Garden, Mountain</b>	

**Public Remarks:** GRAND OPPORTUNITY to own this beautifully well kept 1 bedroom, 1 bathroom unit in Mililani! Schofield, Wheeler, and Wahiawa are just minutes away. This 2nd floor pet-friendly unit includes 1 dedicated parking stall on the same floor. Fully renovated in 2017, the owner had professional cleaning done every quarter since; Stainless steel appliances, granite counter tops, waterproof vinyl plank flooring, etc. Bathroom was also upgraded with new vanity, bath tub, tiles, large mirror and a spacious closet. With access through the living room, slide your glass door open to your very own spacious covered lanai with beautiful mountain views. The lanai views also include the park which include basketball court, baseball field and playground! Furthermore, cool off in the condo pool! This home is conveniently located near shopping center, restaurants and more with quick access to the freeway! Well known North Shore is just a short drive away! **Sale Conditions:** None **Schools:** [Kipapa](#), [Mililani](#), [Mililani](#) \* [Request Showing](#), [Photos](#), [History](#), [Maps](#), [Deed](#), [Watch List](#), [Tax Info](#)



Address	Price	Bd & Bth	Living / Avg.	Land   Avg.	Lanai	Occ.	FL	DOM
<a href="#">95-055 Waikalani Drive H204</a>	<a href="#">\$385,000</a>	1 & 1/0	607   \$634	182,124   \$2	97	53%	2	6

Address	Tax   Maint.   Ass.	Assessed Land	Assessed Building	Assessed Total	Ratio	Year & Remodeled
<a href="#">95-055 Waikalani Drive H204</a>	\$71   \$510   \$0	\$72,700	\$172,300	\$245,000	157%	1973 & 2017

[95-055 Waikalani Drive H204](#) - MLS#: [202220398](#) - GRAND OPPORTUNITY to own this beautifully well kept 1 bedroom, 1 bathroom unit in Mililani! Schofield, Wheeler, and Wahiawa are just minutes away. This 2nd floor pet-friendly unit includes 1 dedicated parking stall on the same floor. Fully renovated in 2017, the owner had professional cleaning done every quarter since; Stainless steel appliances, granite counter tops, waterproof vinyl plank flooring, etc. Bathroom was also upgraded with new vanity, bath tub, tiles, large mirror and a spacious closet. With access through the living room, slide your glass door open to your very own spacious covered lanai with beautiful mountain views. The lanai views also include the park which include basketball court, baseball field and playground! Furthermore, cool off in the condo pool! This home is conveniently located near shopping center, restaurants and more with quick access to the freeway! Well known North Shore is just a short drive away! **Region:** Central **Neighborhood:** Waipio Acres-waikalani Woodlands **Condition:** Excellent **Parking:** Assigned, Covered - 1, Guest, Street, Unassigned **Total Parking:** 1 **View:** Garden, Mountain **Frontage:** Pool: **Zoning:** 11 - A-1 Low Density Apartment **Sale Conditions:** None **Schools:** [Kipapa](#), [Mililani](#), [Mililani](#) \* [Request Showing](#), [Photos](#), [History](#), [Maps](#), [Deed](#), [Watch List](#), [Tax Info](#)

DOM = Days on Market, Occ. = Occupancy, FL = Floor Number