

Discovery Bay 1778 Ala Moana Boulevard Unit 1514, Honolulu 96815 * Discovery Bay *

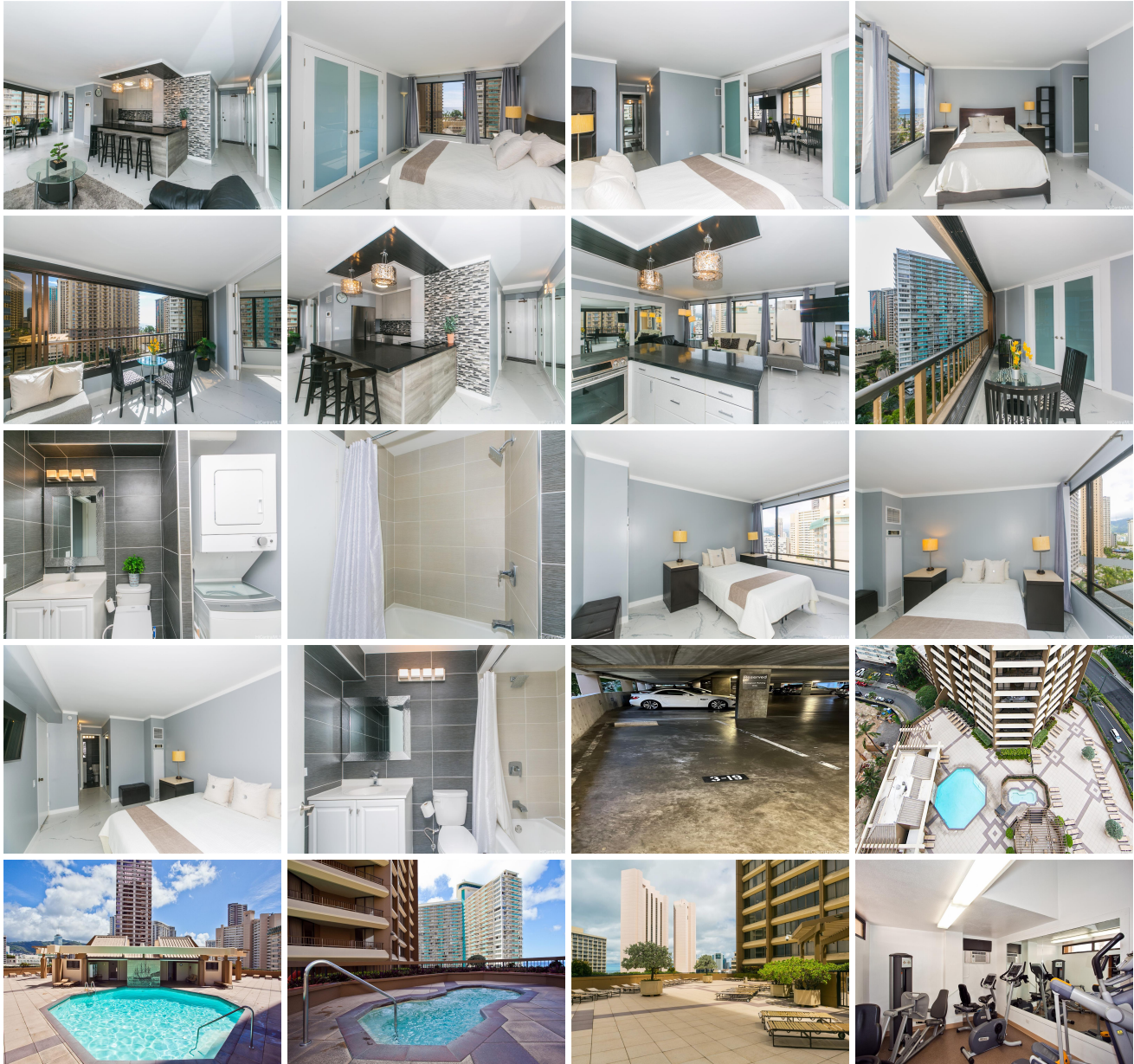
\$468,000 * Originally \$518,000

Sold Price: \$463,000	Sold Date: 04-14-2023	Sold Ratio: 99%
Beds: 2	MLS#: 20225227 , LH	Year Built: 1977
Bath: 2/0	Status: Sold	Remodeled: 2020
Living Sq. Ft.: 1,131	List Date & DOM: 12-05-2022 & 95	Total Parking: 1
Land Sq. Ft.: 0	Condition: Excellent	Assessed Value
Lanai Sq. Ft.: 0	Frontage:	Building: \$628,700
Sq. Ft. Other: 0	Tax/Year: \$189/2022	Land: \$18,600
Total Sq. Ft. 1,131	Neighborhood: Waikiki	Total: \$647,300
Maint./Assoc. \$1,188 / \$0	Flood Zone : Zone AE - Tool	Stories / CPR: 21+ / No
Parking: Assigned, Covered - 1, Secured Entry	Frontage:	

[Zoning](#): **X2 - Apartment Precinct**

View: **City, Coastline, Marina/Canal, Ocean**

Public Remarks: Beautifully fully remodeled 2 bedroom, 2 bath corner unit with amazing ocean, city, and marina views in Discovery Bay's 'Resolution Tower'. Very open floor plan with a unique lanai enclosure that makes this unit have a great spacious feel. No popcorn ceilings, crown moldings, Quartz countertops, new appliances, new flooring throughout, and remodeled bathrooms! Gorgeous French Doors leading your primary bedroom. Amenities include a private pool deck, a huge hot tub, 2 gyms, and sauna! Maintenance fees include Internet, Cable TV, Central AC, Sewer, Water, and common area expenses. Covered parking stall is rare with no other parking stalls on the left or right. Ideal location close to the beach, restaurants, public transportation, and shopping! This is a must see! **Sale Conditions:** None **Schools:** , , * [Request Showing](#), [Photos](#), [History](#), [Maps](#), [Deed](#), [Watch List](#), [Tax Info](#)





Address	Price	Bd & Bth	Living / Avg.	Land Avg.	Lanai	Occ.	FL	DOM
1778 Ala Moana Boulevard 1514	\$468,000 LH	2 & 2/0	1,131 \$414	0 \$inf	0	19%	15	95

Address	Tax Maint. Ass.	Assessed Land	Assessed Building	Assessed Total	Ratio	Year & Remodeled
1778 Ala Moana Boulevard 1514	\$189 \$1,188 \$0	\$18,600	\$628,700	\$647,300	72%	1977 & 2020

Address	Sold Price	Sold Date	Sold Ratio	Original Ratio	Sold Terms
1778 Ala Moana Boulevard 1514	\$463,000	04-14-2023	99%	89%	Conventional

<p>1778 Ala Moana Boulevard 1514 - MLS#: 202225227 - Original price was \$518,000 - Beautifully fully remodeled 2 bedroom, 2 bath corner unit with amazing ocean, city, and marina views in Discovery Bay's 'Resolution Tower'. Very open floor plan with a unique lanai enclosure that makes this unit have a great spacious feel. No popcorn ceilings, crown moldings, Quartz countertops, new appliances, new flooring throughout, and remodeled bathrooms! Gorgeous French Doors leading your primary bedroom. Amenities include a private pool deck, a huge hot tub, 2 gyms, and sauna! Maintenance fees include Internet, Cable TV, Central AC, Sewer, Water, and common area expenses. Covered parking stall is rare with no other parking stalls on the left or right. Ideal location close to the beach, restaurants, public transportation, and shopping! This is a must see! Region: Metro Neighborhood: Waikiki Condition: Excellent Parking: Assigned, Covered - 1, Secured Entry Total Parking: 1 View: City, Coastline, Marina/Canal, Ocean Frontage: Pool: Zoning: X2 - Apartment Precinct Sale Conditions: None Schools: , , * Request Showing, Photos, History, Maps, Deed, Watch List, Tax Info</p>						
--	--	--	--	--	--	--

DOM = Days on Market, Occ. = Occupancy, FL = Floor Number