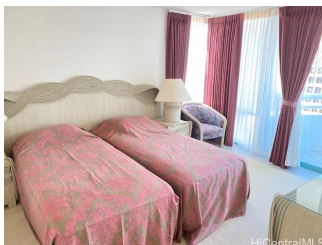


**Uraku Tower Hawaii 1341 Kapiolani Boulevard Unit 16A, Honolulu 96814 \* Uraku Tower**  
**Hawaii \* \$765,000 \* Originally \$825,000**

Beds: <b>2</b>	MLS#: <b><u>202226268</u>, FS</b>	Year Built: <b>1989</b>
Bath: <b>2/0</b>	Status: <b>Active</b>	Remodeled:
Living Sq. Ft.: <b>1,185</b>	List Date & DOM: <b>01-18-2023 &amp; 471</b>	Total Parking: <b>2</b>
Land Sq. Ft.: <b>50,007</b>	Condition: <b>Above Average</b>	<a href="#">Assessed Value</a>
Lanai Sq. Ft.: <b>199</b>	Frontage: <b>Other</b>	Building: <b>\$636,000</b>
Sq. Ft. Other: <b>0</b>	Tax/Year: <b>\$266/2022</b>	Land: <b>\$277,200</b>
Total Sq. Ft. <b>1,384</b>	Neighborhood: <b>Ala Moana</b>	Total: <b>\$913,200</b>
Maint./Assoc. <b>\$2,422 / \$0</b>	<a href="#">Flood Zone</a> : <b>Zone AE - <u>Tool</u></b>	Stories / CPR: <b>One, 21+ / No</b>
Parking: <b>Assigned, Covered - 2, Guest, Secured Entry</b>	Frontage: <b>Other</b>	
<a href="#">Zoning</a> : <b>33 - BMX-3 Community Business M</b>	View: <b>City, Mountain, Ocean, Sunset</b>	

**Public Remarks:** Location, Location Across the street from Ala Moana Shopping Center , Close to Waikiki, and Beach ,great limo Service to Airport or other place ,concierge housekeeping weekly cleaning service. End Unit in Beautiful 2 bedroom 2 bathroom with cover 2 parking stall. Two lanais one off the main bedroom for city, mountain view, and one off the living room, where you can see all the way to ocean. Amenities include heated pool, whirlpool, putting green, BBQ area, library. social room ,wet, dry sauna. 24 hours front desk and security. Two parking stalls No pet, Nor Smoking No open house allowed as per Uraku Tower House -rule. **Sale Conditions:** None **Schools:** , , \* [Request Showing](#), [Photos](#), [History](#), [Maps](#), [Deed](#), [Watch List](#), [Tax Info](#)





Address	Price	Bd & Bth	Living / Avg.	Land   Avg.	Lanai	Occ.	FL	DOM
<a href="#">1341 Kapiolani Boulevard 16A</a>	<b>\$765,000</b>	2 & 2/0	1,185   \$646	50,007   \$15	199	80%	16	471

Address	Tax   Maint.   Ass.	Assessed Land	Assessed Building	Assessed Total	Ratio	Year & Remodeled
<a href="#">1341 Kapiolani Boulevard 16A</a>	\$266   \$2,422   \$0	\$277,200	\$636,000	\$913,200	84%	1989 & NA

<p><a href="#">1341 Kapiolani Boulevard 16A</a> - MLS#: <a href="#">202226268</a> - Original price was \$825,000 - Location, Location Across the street from Ala Moana Shopping Center , Close to Waikiki, and Beach ,great limo Service to Airport or other place ,concierge housekeeping weekly cleaning service. End Unit in Beautiful 2 bedroom 2 bathroom with cover 2 parking stall. Two lanais one off the main bedroom for city, mountain view, and one off the living room, where you can see all the way to ocean. Amenities include heated pool, whirlpool, putting green, BBQ area, library. social room ,wet, dry sauna. 24 hours front desk and security. Two parking stalls No pet, Nor Smoking No open house allowed as per Uraku Tower House -rule. <b>Region:</b> Metro <b>Neighborhood:</b> Ala Moana <b>Condition:</b> Above Average <b>Parking:</b> Assigned, Covered - 2, Guest, Secured Entry <b>Total Parking:</b> 2 <b>View:</b> City, Mountain, Ocean, Sunset <b>Frontage:</b> Other <b>Pool:</b> <b>Zoning:</b> 33 - BMX-3 Community Business M <b>Sale Conditions:</b> None <b>Schools:</b> , , * <a href="#">Request Showing</a>, <a href="#">Photos</a>, <a href="#">History</a>, <a href="#">Maps</a>, <a href="#">Deed</a>, <a href="#">Watch List</a>, <a href="#">Tax Info</a></p>						
--	--	--	--	--	--	--

DOM = Days on Market, Occ. = Occupancy, FL = Floor Number