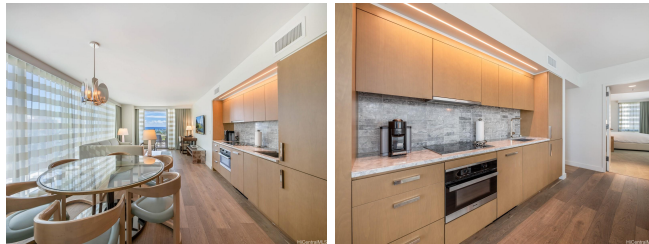


## The Ritz-Carlton Residences - 383 Kalaim 383 Kalaimoku Street Unit 1216, Honolulu 96815

**\* The Ritz-Carlton Residences - 383 Kalaim \* \$1,633,800 \* Originally \$1,658,800**

Beds: <b>2</b>	MLS#: <b>202309851, FS</b>	Year Built: <b>2014</b>
Bath: <b>2/0</b>	Status: <b>Active</b>	Remodeled:
Living Sq. Ft.: <b>1,142</b>	List Date & DOM: <b>04-28-2023 &amp; 371</b>	Total Parking: <b>0</b>
Land Sq. Ft.: <b>0</b>	Condition: <b>Excellent</b>	<a href="#">Assessed Value</a>
Lanai Sq. Ft.: <b>93</b>	Frontage:	Building: <b>\$1,163,400</b>
Sq. Ft. Other: <b>0</b>	Tax/Year: <b>\$1,511/2023</b>	Land: <b>\$141,000</b>
Total Sq. Ft. <b>1,235</b>	Neighborhood: <b>Waikiki</b>	Total: <b>\$1,304,400</b>
Maint./Assoc. <b>\$2,307 / \$0</b>	<a href="#">Flood Zone</a> : <b>Zone AO - Tool</b>	Stories / CPR: <b>One / No</b>
Parking: <b>Guest</b>	Frontage:	
<a href="#">Zoning</a> : <b>X6 - Resort Mixed Use Precinct</b>	View: <b>City, Marina/Canal, Mountain, Ocean</b>	

**Public Remarks:** Indulge in luxurious island living with this exquisite 2 bedroom, 2 bathroom corner unit located in the award-winning Ritz-Carlton Residences of Waikiki. Boasting panoramic views of the ocean, sunset, and Waikiki, this condo is a true paradise. Inside you'll find a fully furnished unit with a full kitchen featuring high-end appliances and granite countertops, as well as all the linens and kitchenware you need to settle in and feel at home. Enjoy a cocktail on your covered lanai and watch Friday night fireworks. But the luxury doesn't end there. The Ritz-Carlton Residences offer an array of five-star amenities, including an infinity pool, full-service spa, fitness center, concierge service, and valet parking, to name a few. On-property dining options like Sushi Sho, La Vie, Quiora, and Dean and Deluca offer world-class cuisine that you can indulge in without ever leaving home. Relax and take in the breathtaking views from your private covered lanai, or step out and explore the vibrant Waikiki scene just steps away. This is a rare opportunity to experience the very best of Waikiki living in one of its most coveted residences. **Sale Conditions:** None **Schools:** , , \* [Request Showing](#), [Photos](#), [History](#), [Maps](#), [Deed](#), [Watch List](#), [Tax Info](#)



Address	Price	Bd & Bth	Living / Avg.	Land   Avg.	Lanai	Occ.	FL	DOM
<a href="#">383 Kalaimoku Street 1216</a>	<b>\$1,633,800</b>	2 & 2/0	1,142   \$1,431	0   \$inf	93	2%	12	371

Address	Tax   Maint.   Ass.	Assessed Land	Assessed Building	Assessed Total	Ratio	Year & Remodeled
<a href="#">383 Kalaimoku Street 1216</a>	\$1,511   \$2,307   \$0	\$141,000	\$1,163,400	\$1,304,400	125%	2014 & NA

[383 Kalaimoku Street 1216](#) - MLS#: [202309851](#) - Original price was \$1,658,800 - Indulge in luxurious island living with this exquisite 2 bedroom, 2 bathroom corner unit located in the award-winning Ritz-Carlton Residences of Waikiki. Boasting panoramic views of the ocean, sunset, and Waikiki, this condo is a true paradise. Inside you'll find a fully furnished unit with a full kitchen featuring high-end appliances and granite countertops, as well as all the linens and kitchenware you need to settle in and feel at home. Enjoy a cocktail on your covered lanai and watch Friday night fireworks. But the luxury doesn't end there. The Ritz-Carlton Residences offer an array of five-star amenities, including an infinity pool, full-service spa, fitness center, concierge service, and valet parking, to name a few. On-property dining options like Sushi Sho, La Vie, Quiora, and Dean and Deluca offer world-class cuisine that you can indulge in without ever leaving home. Relax and take in the breathtaking views from your private covered lanai, or step out and explore the vibrant Waikiki scene just steps away. This is a rare opportunity to experience the very best of Waikiki living in one of its most coveted residences. **Region:** Metro **Neighborhood:** Waikiki **Condition:** Excellent **Parking:** Guest **Total Parking:** 0 **View:** City, Marina/Canal, Mountain, Ocean **Frontage:** Pool: **Zoning:** X6 - Resort Mixed Use Precinct **Sale Conditions:** None **Schools:** , , \* [Request Showing](#), [Photos](#), [History](#), [Maps](#), [Deed](#), [Watch List](#), [Tax Info](#)

DOM = Days on Market, Occ. = Occupancy, FL = Floor Number