

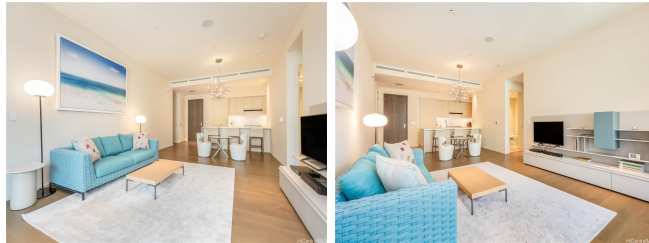
Park Lane 1388 Ala Moana Boulevard Unit 7703, Honolulu 96814 * Park Lane * \$4,980,000

*** Originally \$5,100,000**

Beds: 2	MLS#: 202310162, FS	Year Built: 2016
Bath: 2/0	Status: Active	Remodeled:
Living Sq. Ft.: 1,507	List Date & DOM: 05-03-2023 & 379	Total Parking: 2
Land Sq. Ft.: 0	Condition: Excellent	Assessed Value
Lanai Sq. Ft.: 258	Frontage:	Building: \$2,913,900
Sq. Ft. Other: 0	Tax/Year: \$2,293/2022	Land: \$278,300
Total Sq. Ft. 1,765	Neighborhood: Ala Moana	Total: \$3,192,200
Maint./Assoc. \$2,580 / \$0	Flood Zone : Zone AE - Tool	Stories / CPR: 4-7 / No
Parking: Covered - 2	Frontage:	
Zoning : 33 - BMX-3 Community Business M	View: Ocean, Sunset	

Public Remarks: An excellent opportunity to own a Park Lane unit. The most luxurious building in Hawaii with amenities galore! Men's and Women's spa area, dog park, fitness center, private dining, club lounge, theater, wine cellar, and so much more. Enjoy the luxuries of a hotel with a front desk, bell/valet services and guest suites to accommodate your visitors. Large 2bed/2bath floor plan elegantly designed with European oak wood flooring & stone bathrooms, 10ft ceilings, and stacking glass doors with automatic shades. 2 parking stalls conveniently. This luxury community offers resort-like amenities, superb residence services including valet, concierge, and 24-hr security, and a prime location alongside Ala Moana shopping center.

Sale Conditions: None **Schools:** , , * [Request Showing](#), [Photos](#), [History](#), [Maps](#), [Deed](#), [Watch List](#), [Tax Info](#)



Address	Price	Bd & Bth	Living / Avg.	Land Avg.	Lanai	Occ.	FL	DOM
1388 Ala Moana Boulevard 7703	\$4,980,000	2 & 2/0	1,507 \$3,305	0 \$inf	258	2%	7	379

Address	Tax Maint. Ass.	Assessed Land	Assessed Building	Assessed Total	Ratio	Year & Remodeled
1388 Ala Moana Boulevard 7703	\$2,293 \$2,580 \$0	\$278,300	\$2,913,900	\$3,192,200	156%	2016 & NA

[1388 Ala Moana Boulevard 7703](#) - MLS#: [202310162](#) - Original price was \$5,100,000 - An excellent opportunity to own a Park Lane unit. The most luxurious building in Hawaii with amenities galore! Men's and Women's spa area, dog park, fitness center, private dining, club lounge, theater, wine cellar, and so much more. Enjoy the luxuries of a hotel with a front desk, bell/valet services and guest suites to accommodate your visitors. Large 2bed/2bath floor plan elegantly designed with European oak wood flooring & stone bathrooms, 10ft ceilings, and stacking glass doors with automatic shades. 2 parking stalls conveniently. This luxury community offers resort-like amenities, superb residence services including valet, concierge, and 24-hr security, and a prime location alongside Ala Moana shopping center. **Region:** Metro **Neighborhood:** Ala Moana **Condition:** Excellent **Parking:** Covered - 2 **Total Parking:** 2 **View:** Ocean, Sunset **Frontage:** Pool: **Zoning:** 33 - BMX-3 Community Business M **Sale Conditions:** None **Schools:** , , * [Request Showing](#), [Photos](#), [History](#), [Maps](#), [Deed](#), [Watch List](#), [Tax Info](#)

DOM = Days on Market, Occ. = Occupancy, FL = Floor Number