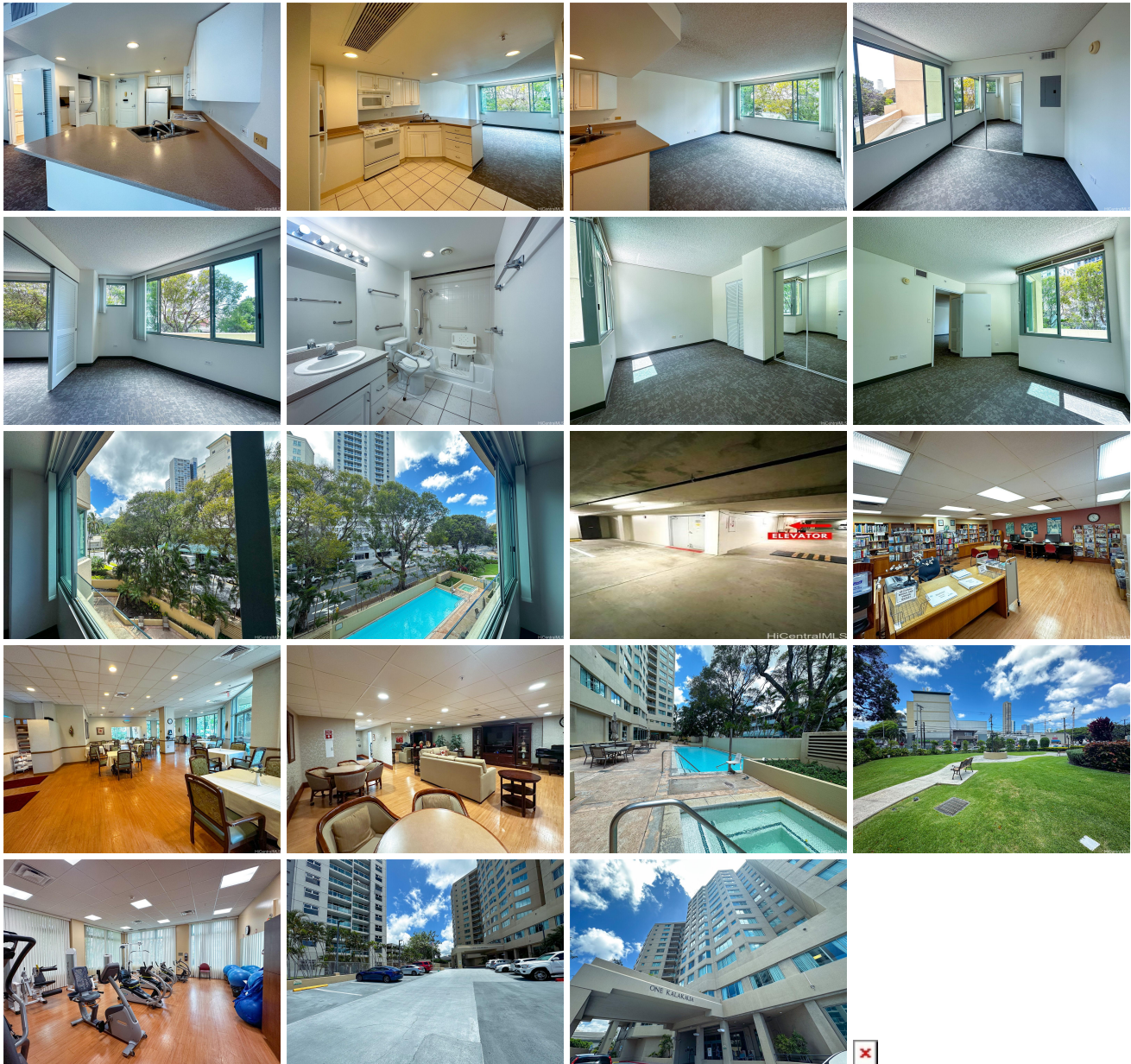


ONE KALAKAUA SENIOR LIVING 1314 Kalakaua Avenue Unit 305, Honolulu 96826 * ONE

KALAKAUA SENIOR LIVING * \$350,000 * Originally \$395,000

Beds: 2	MLS#: <u>202311474</u>, FS	Year Built: 1996
Bath: 1/0	Status: Active	Remodeled:
Living Sq. Ft.: 703	List Date & DOM: 06-02-2023 & 344	Total Parking: 1
Land Sq. Ft.: 0	Condition: Above Average	Assessed Value
Lanai Sq. Ft.: 0	Frontage:	Building: \$454,600
Sq. Ft. Other: 0	Tax/Year: \$150/2024	Land: \$58,500
Total Sq. Ft. 703	Neighborhood: Makiki Area	Total: \$513,100
Maint./Assoc. \$2,217 / \$0	Flood Zone : Zone X - Tool	Stories / CPR: Three+ / No
Parking: Assigned, Covered - 1, Guest	Frontage:	
Zoning : 33 - BMX-3 Community Business M	View: City, Mountain	

Public Remarks: **NEW PRICE** Experience luxury living at One Kalakaua Senior Living in Apt #305, a spacious 2BD/1BA condo with stunning mountain, treetop, & pool views. Conveniently located near the elevators and emergency stairs providing easy access. Safety is paramount with security cameras, a front desk sign-in requiring guest license plates and purpose of visit. This unit includes a secure parking stall and additional storage near the elevator for effortless access. Your daily needs are just a short ride away, with medical centers, supermarkets & Ala Moana Shopping Center in close proximity. Live with peace of mind, as on-site skilled nursing, specialist visits (podiatrist, physical therapists, dietician), and hospice care are available. Indulge in resort-like amenities for socializing, wellness, and enrichment. Enjoy meals tailored to meet dietary needs in the dining hall & stay active at the pool, gym, recreation areas, library with computers/printers, and the hair salon. Benefit from weekly housekeeping services, ensuring a hassle-free lifestyle. Embrace the retirement you deserve with luxury and convenience at One Kalakaua Senior Living, where care and security ensure the utmost comfort. **Sale Conditions:** Probate **Schools:** , , * [Request Showing](#), [Photos](#), [History](#), [Maps](#), [Deed](#), [Watch List](#), [Tax Info](#)



Address	Price	Bd & Bth	Living / Avg.	Land Avg.	Lanai	Occ.	FL	DOM
1314 Kalakaua Avenue 305	\$350,000	2 & 1/0	703 \$498	0 \$inf	0	45%	3	344

Address	Tax Maint. Ass.	Assessed Land	Assessed Building	Assessed Total	Ratio	Year & Remodeled
1314 Kalakaua Avenue 305	\$150 \$2,217 \$0	\$58,500	\$454,600	\$513,100	68%	1996 & NA

[1314 Kalakaua Avenue 305](#) - MLS#: [202311474](#) - Original price was \$395,000 - ****NEW PRICE**** Experience luxury living at One Kalakaua Senior Living in Apt #305, a spacious 2BD/1BA condo with stunning mountain, treetop, & pool views. Conveniently located near the elevators and emergency stairs providing easy access. Safety is paramount with security cameras, a front desk sign-in requiring guest license plates and purpose of visit. This unit includes a secure parking stall and additional storage near the elevator for effortless access. Your daily needs are just a short ride away, with medical centers, supermarkets & Ala Moana Shopping Center in close proximity. Live with peace of mind, as on-site skilled nursing, specialist visits (podiatrist, physical therapists, dietician), and hospice care are available. Indulge in resort-like amenities for socializing, wellness, and enrichment. Enjoy meals tailored to meet dietary needs in the dining hall & stay active at the pool, gym, recreation areas, library with computers/printers, and the hair salon. Benefit from weekly housekeeping services, ensuring a hassle-free lifestyle. Embrace the retirement you deserve with luxury and convenience at One Kalakaua Senior Living, where care and security ensure the utmost comfort. **Region:** Metro **Neighborhood:** Makiki Area **Condition:** Above Average **Parking:** Assigned, Covered - 1, Guest **Total Parking:** 1 **View:** City, Mountain **Frontage:** **Pool:** **Zoning:** 33 - BMX-3 Community Business M **Sale Conditions:** Probate **Schools:** , , * [Request Showing](#), [Photos](#), [History](#), [Maps](#), [Deed](#), [Watch List](#), [Tax Info](#)

DOM = Days on Market, Occ. = Occupancy, FL = Floor Number