

Ilikai Apt Bldg 1777 Ala Moana Boulevard Unit 2428, Honolulu 96815 * Ilikai Apt Bldg *

\$860,000

Beds: **1**
Bath: **1/0**
Living Sq. Ft.: **500**
Land Sq. Ft.: **125,279**
Lanai Sq. Ft.: **120**
Sq. Ft. Other: **0**
Total Sq. Ft. **620**
Maint./Assoc. **\$633 / \$0**
Parking: **None**

MLS#: **202312983, FS**
Status: **Active**
List Date & DOM: **06-02-2023 & 341**
Condition: **Excellent**
Frontage:
Tax/Year: **\$949/2023**
Neighborhood: **Waikiki**
Flood Zone: Zone AE - Tool

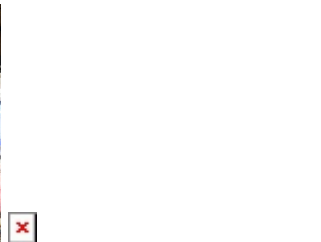
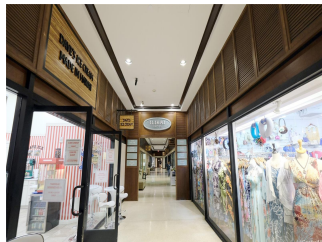
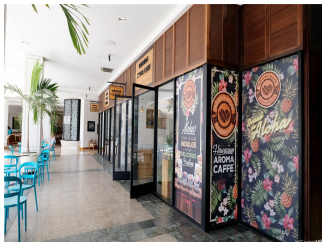
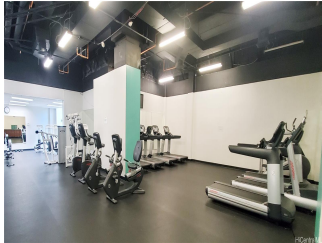
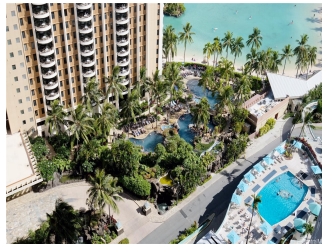
Year Built: **1965**
Remodeled: **2014**
Total Parking: **0**
Assessed Value
Building: **\$685,400**
Land: **\$124,800**
Total: **\$810,200**
Stories / CPR: **21+ / No**

Frontage:

Zoning: X6 - Resort Mixed Use Precinct

View: **City, Coastline, Diamond Head, Garden, Ocean**

Public Remarks: Located between the famous Waikiki and the world's largest luxury open-air Ala Moana Shopping Center, the Ilikai Hotel & Luxury Suites grace the quintessential island life that dreams are made of. This fully furnished, high-floor unit by the cooler side of the building offers endless views of amazing white sand beaches, the lagoon, the ocean, and the iconic landmark, Diamond Head. Hassle-free hotel pool program managed, provides decent cash flow while you are away. Reasonably low maintenance fee is ideal for both primary residence or vacation home. Enjoy resort-like amenities, retail shops, spa/salon, and on-site dining. All of this awaits you. Owning a piece of paradise is never this easy! **Sale Conditions:** None **Schools:** , , * **Request Showing, Photos, History, Maps, Deed, Watch List, Tax Info**



Address	Price	Bd & Bth	Living / Avg.	Land Avg.	Lanai	Occ.	FL	DOM
1777 Ala Moana Boulevard 2428	\$860,000	1 & 1/0	500 \$1,720	125,279 \$7	120	4%	24	341

Address	Tax Maint. Ass.	Assessed Land	Assessed Building	Assessed Total	Ratio	Year & Remodeled
1777 Ala Moana Boulevard 2428	\$949 \$633 \$0	\$124,800	\$685,400	\$810,200	106%	1965 & 2014

[1777 Ala Moana Boulevard 2428](#) - MLS#: [202312983](#) - Located between the famous Waikiki and the world's largest luxury open-air Ala Moana Shopping Center, the Ilikai Hotel & Luxury Suites grace the quintessential island life that dreams are made of. This fully furnished, high-floor unit by the cooler side of the building offers endless views of amazing white sand beaches, the lagoon, the ocean, and the iconic landmark, Diamond Head. Hassle-free hotel pool program managed, provides decent cash flow while you are away. Reasonably low maintenance fee is ideal for both primary residence or vacation home. Enjoy resort-like amenities, retail shops, spa/salon, and on-site dining. All of this awaits you. Owning a piece of paradise is never this easy! **Region:** Metro **Neighborhood:** Waikiki **Condition:** Excellent **Parking:** None **Total Parking:** 0 **View:** City, Coastline, Diamond Head, Garden, Ocean **Frontage:** **Pool:** **Zoning:** X6 - Resort Mixed Use Precinct **Sale Conditions:** None **Schools:** , , * [Request Showing](#), [Photos](#), [History](#), [Maps](#), [Deed](#), [Watch List](#), [Tax Info](#)

DOM = Days on Market, Occ. = Occupancy, FL = Floor Number