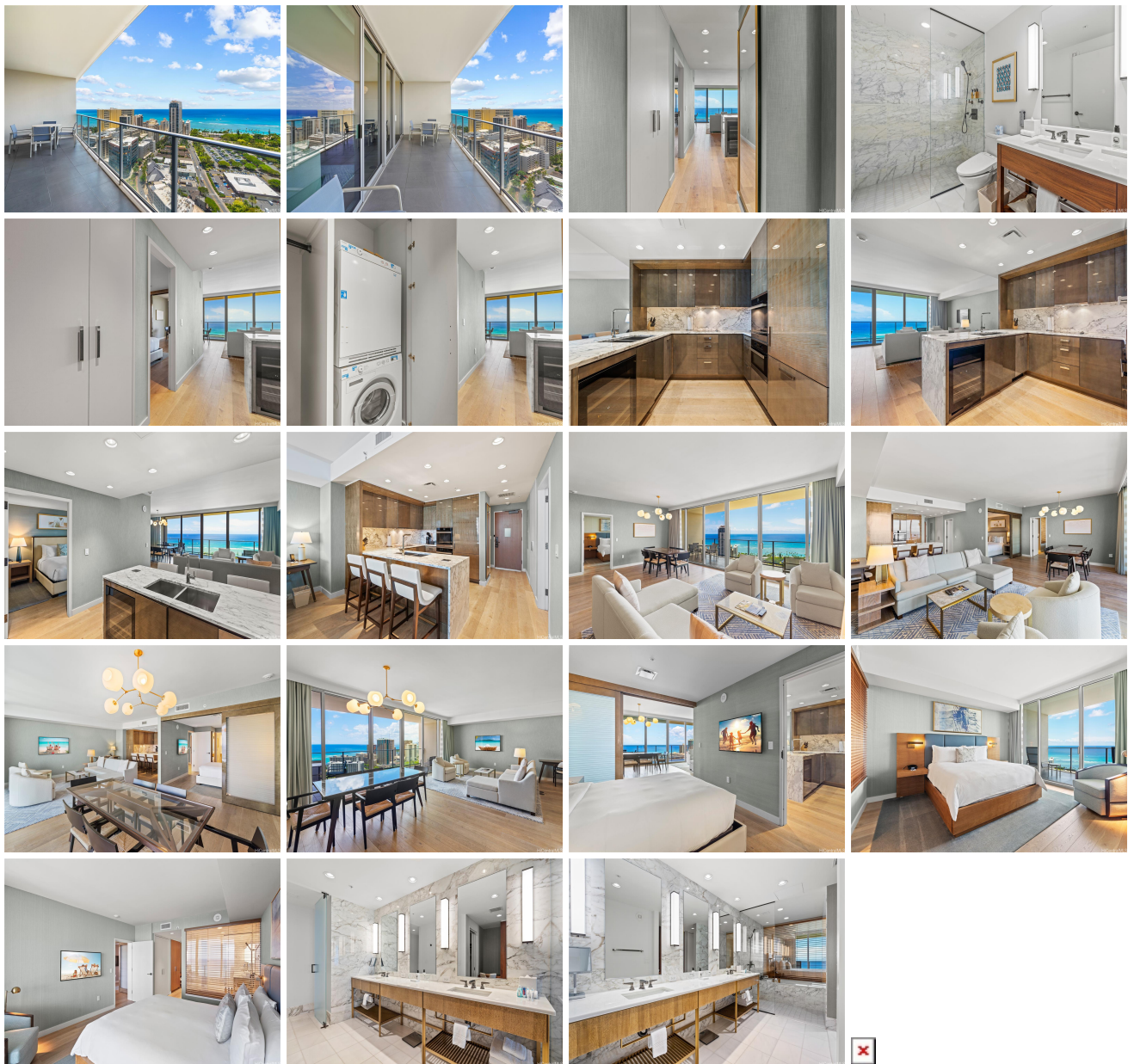


The Ritz-Carlton Residences - 383 Kalaim 383 Kalaimoku Street Unit E3403, Honolulu 96815 * The Ritz-Carlton Residences - 383 Kalaim * \$3,395,000

Beds: 2	MLS#: 202313091, FS	Year Built: 2016
Bath: 3/0	Status: Pending	Remodeled:
Living Sq. Ft.: 1,429	List Date & DOM: 06-05-2023 & 297	Total Parking: 0
Land Sq. Ft.: 0	Condition: Excellent	Assessed Value
Lanai Sq. Ft.: 392	Frontage:	Building: \$2,946,900
Sq. Ft. Other: 0	Tax/Year: \$2,638/2022	Land: \$175,100
Total Sq. Ft. 1,821	Neighborhood: Waikiki	Total: \$3,122,000
Maint./Assoc. \$3,042 / \$0	Flood Zone : Zone AO - Tool	Stories / CPR: / No
Parking: None	Frontage:	
Zoning : X6 - Resort Mixed Use Precinct	View: City, Ocean, Sunset	

Public Remarks: Island lifestyle with the finest and the most luxury hotel condominium in Oahu. Enjoy and relax The Ritz-Carlton's signature hotel service. Unit #03 stack at the Premier Level floor has a popular floor plan with exceptional ocean view from the spacious lanai, kitchen and living room. A complimentary valet parking service is available for owners. Fully furnished and includes High-end appliances; refrigerator, glass-top stove, microwave/convection, wine cooler, and dishwasher. Washer and dryer are in-unit. Well known restaurants, Sushi Sho, Quiora, and La Vie are available within the hotel. **Sale Conditions:** None **Schools:** , , * [Request Showing](#), [Photos](#), [History](#), [Maps](#), [Deed](#), [Watch List](#), [Tax Info](#)



Address	Price	Bd & Bth	Living / Avg.	Land Avg.	Lanai	Occ.	FL	DOM
383 Kalaimoku Street E3403	\$3,395,000	2 & 3/0	1,429 \$2,376	0 \$inf	392	43%	34	297

Address	Tax Maint. Ass.	Assessed Land	Assessed Building	Assessed Total	Ratio	Year & Remodeled
383 Kalaimoku Street E3403	\$2,638 \$3,042 \$0	\$175,100	\$2,946,900	\$3,122,000	109%	2016 & NA

[383 Kalaimoku Street E3403](#) - MLS#: [202313091](#) - Island lifestyle with the finest and the most luxury hotel condominium in Oahu. Enjoy and relax The Ritz-Carlton's signature hotel service. Unit #03 stack at the Premier Level floor has a popular floor plan with exceptional ocean view from the spacious lanai, kitchen and living room. A complimentary valet parking service is available for owners. Fully furnished and includes High-end appliances; refrigerator, glass-top stove, microwave/convection, wine cooler, and dishwasher. Washer and dryer are in-unit. Well known restaurants, Sushi Sho, Quiora, and La Vie are available within the hotel. **Region:** Metro **Neighborhood:** Waikiki **Condition:** Excellent **Parking:** None **Total Parking:** 0 **View:** City, Ocean, Sunset **Frontage:** Pool: **Zoning:** X6 - Resort Mixed Use Precinct **Sale Conditions:** None **Schools:** , , * [Request Showing](#), [Photos](#), [History](#), [Maps](#), [Deed](#), [Watch List](#), [Tax Info](#)

DOM = Days on Market, Occ. = Occupancy, FL = Floor Number