

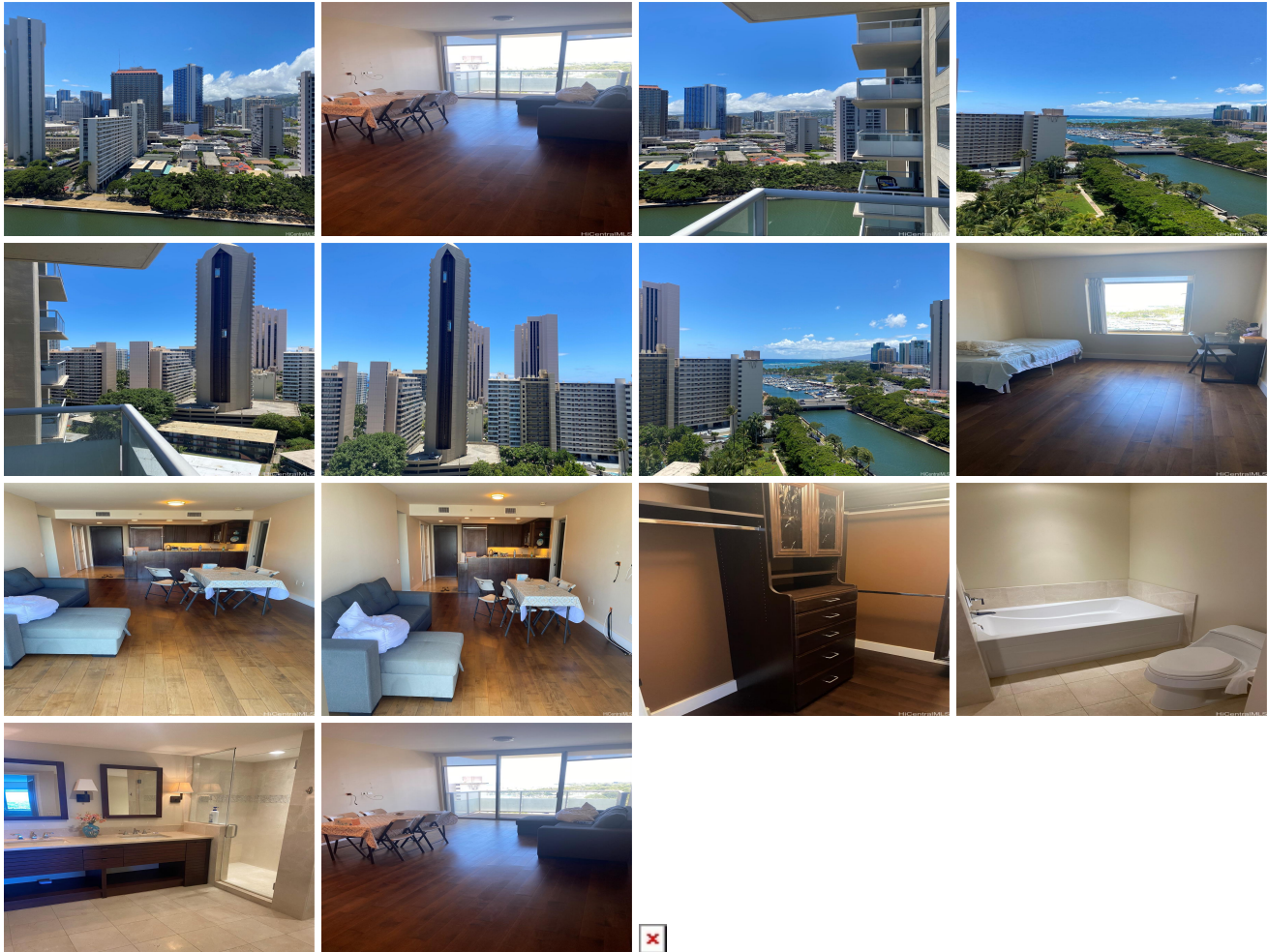
The Watermark 1551 Ala Wai Boulevard Unit 1603, Honolulu 96815 * The Watermark *

\$1,250,000

Beds: 2	MLS#: 202314005, FS	Year Built: 2008
Bath: 2/0	Status: Active	Remodeled:
Living Sq. Ft.: 1,113	List Date & DOM: 06-25-2023 & 324	Total Parking: 2
Land Sq. Ft.: 0	Condition: Excellent	Assessed Value
Lanai Sq. Ft.: 76	Frontage:	Building: \$1,195,900
Sq. Ft. Other: 0	Tax/Year: \$516/2022	Land: \$220,200
Total Sq. Ft. 1,189	Neighborhood: Waikiki	Total: \$1,416,100
Maint./Assoc. \$1,561 / \$0	Flood Zone : Zone AE - Tool	Stories / CPR: 21+ / No
Parking: Assigned, Covered - 2, Guest	Frontage:	
Zoning : X2 - Apartment Precinct	View: City, Marina/Canal, Mountain, Ocean, Sunset	

Public Remarks: 2 bedrooms, 2 baths, 2 parking stalls (easy access, near the elevator) in The Watermark - Beautiful and luxurious resort style condo with gorgeous views. Ideally located at the entrance of Waikiki, where it is quieter, more peaceful, and still very convenient. A private lanai features beautiful ocean, canal, harbor, city mountain and garden views. Enjoy impressive daily sunsets and the annual Magic Island July 4th fireworks right from your living room! Well-equipped fitness center, sauna, BBQ pavilions, and grand open-air lobby with 24/7 security. Convenient storage available for bicycles, surfboards, and canoes. Just blocks away from world famous Ala Moana Shopping Center, Kaka'ako, beach, parks, restaurants, shopping, super markets and more! There is a tenants living now so we need 48 hour notice. **Sale Conditions:** None

Schools: , , * [Request Showing](#), [Photos](#), [History](#), [Maps](#), [Deed](#), [Watch List](#), [Tax Info](#)



Address	Price	Bd & Bth	Living / Avg.	Land Avg.	Lanai	Occ.	FL	DOM
1551 Ala Wai Boulevard 1603	\$1,250,000	2 & 2/0	1,113 \$1,123	0 \$inf	76	60%	16	324

Address	Tax Maint. Ass.	Assessed Land	Assessed Building	Assessed Total	Ratio	Year & Remodeled
1551 Ala Wai Boulevard 1603	\$516 \$1,561 \$0	\$220,200	\$1,195,900	\$1,416,100	88%	2008 & NA

[1551 Ala Wai Boulevard 1603](#) - MLS#: [202314005](#) - 2 bedrooms, 2 baths, 2 parking stalls (easy access, near the elevator) in The Watermark - Beautiful and luxurious resort style condo with gorgeous views. Ideally located at the entrance of Waikiki, where it is quieter, more peaceful, and still very convenient. A private lanai features beautiful ocean, canal, harbor, city mountain and garden views. Enjoy impressive daily sunsets and the annual Magic Island July 4th fireworks right from your living room! Well-equipped fitness center, sauna, BBQ pavilions, and grand open-air lobby with 24/7 security. Convenient storage available for bicycles, surfboards, and canoes. Just blocks away from world famous Ala Moana Shopping Center, Kaka'ako, beach, parks, restaurants, shopping, super markets and more! There is a tenants living now so we need 48 hour notice. **Region:** Metro **Neighborhood:** Waikiki **Condition:** Excellent **Parking:** Assigned, Covered - 2, Guest **Total Parking:** 2 **View:** City, Marina/Canal, Mountain, Ocean, Sunset **Frontage:** **Pool:** **Zoning:** X2 - Apartment Precinct **Sale Conditions:** None **Schools:** , , * [Request Showing](#), [Photos](#), [History](#), [Maps](#), [Deed](#), [Watch List](#), [Tax Info](#)

DOM = Days on Market, Occ. = Occupancy, FL = Floor Number