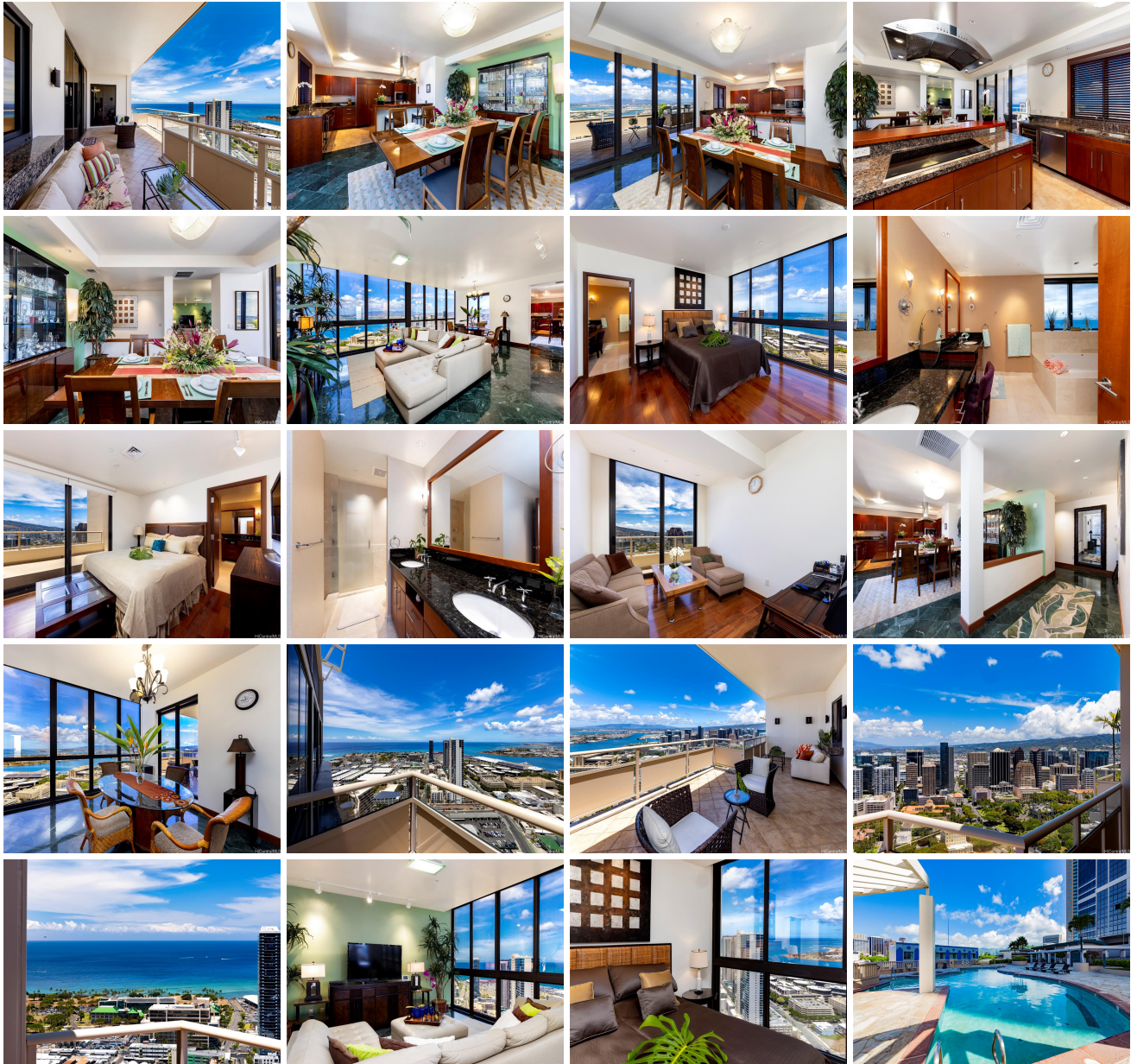


**Keola Lai 600 Queen Street Unit 4302, Honolulu 96813 \* Keola Lai \* \$2,750,000**

|   |   |                                |
|---|---|--------------------------------|
| Beds: <b>2</b>  | MLS#: <b>202314036, FS</b>                        | Year Built: <b>2008</b>        |
| Bath: <b>2/1</b>  | Status: <b>Active</b>                             | Remodeled:                     |
| Living Sq. Ft.: <b>2,235</b>  | List Date & DOM: <b>06-19-2023 &amp; 325</b>      | Total Parking: <b>3</b>        |
| Land Sq. Ft.: <b>0</b>  | Condition: <b>Excellent</b>                       | <a href="#">Assessed Value</a> |
| Lanai Sq. Ft.: <b>0</b>   | Frontage:   | Building: <b>\$1,469,200</b>   |
| Sq. Ft. Other: <b>0</b>   | Tax/Year: <b>\$945/2023</b>                       | Land: <b>\$182,600</b>         |
| Total Sq. Ft. <b>2,235</b>  | Neighborhood: <b>Kakaako</b>                      | Total: <b>\$1,651,800</b>      |
| Maint./Assoc. <b>\$1,887 / \$0</b>  | <a href="#">Flood Zone</a> : <b>Zone X - Tool</b> | Stories / CPR: <b>21+ / No</b> |
| Parking: <b>Covered - 3+, Secured Entry</b>                                 | Frontage:   |                                |
| <a href="#">Zoning</a> : <b>Kak - Kakaako Community Development Project</b> | View: <b>Ocean, Sunset</b>                        |                                |

**Public Remarks:** Soaring above Honolulu's Skyline, welcome home to Keola Lai Penthouse #4302, a sophisticated Ocean View residence in the heart of Kaka'ako. This 2 Bedroom + Den, 2.5 Bath home has been fully re-imagined into an island-luxury retreat; discover a designer chef's kitchen with cherry cabinetry, high-end appliances, and a walk-in pantry, dedicated formal dining area, open main living area with sweeping panoramic vistas, upgraded lighting throughout, separate walk-in laundry room, a spacious lanai area with breathtaking views of paradise, and much more. The primary bedroom suite enjoys stunning ocean views, with the second bedroom and den area situated facing Diamond Head. This incredible location puts you just blocks from sandy beaches, Ala Moana Center, Ward Village, SALT, dining, shopping, entertainment, water sports and more. Capture this stunning Penthouse and enjoy Hawaii's sought-after "Work, Play, Live" lifestyle in the heart of Honolulu. Photos #17, #18, and #20 are zoomed-in. **Sale Conditions:** None **Schools:** [Royal](#), [Keelikolani](#), [Mckinley](#) \* [Request Showing](#), [Photos](#), [History](#), [Maps](#), [Deed](#), [Watch List](#), [Tax Info](#)





| Address                               | Price                       | Bd & Bth | Living / Avg.   | Land   Avg. | Lanai | Occ. | FL | DOM |
|---------------------------------------|-----------------------------|----------|-----------------|-------------|-------|------|----|-----|
| <a href="#">600 Queen Street 4302</a> | <a href="#">\$2,750,000</a> | 2 & 2/1  | 2,235   \$1,230 | 0   \$inf   | 0     | 78%  | 43 | 325 |

| Address                               | Tax   Maint.   Ass.   | Assessed Land | Assessed Building | Assessed Total | Ratio | Year & Remodeled |
|---------------------------------------|-----------------------|---------------|-------------------|----------------|-------|------------------|
| <a href="#">600 Queen Street 4302</a> | \$945   \$1,887   \$0 | \$182,600     | \$1,469,200       | \$1,651,800    | 166%  | 2008 & NA        |

[600 Queen Street 4302](#) - MLS#: [202314036](#) - Soaring above Honolulu's Skyline, welcome home to Keola Lai Penthouse #4302, a sophisticated Ocean View residence in the heart of Kaka'ako. This 2 Bedroom + Den, 2.5 Bath home has been fully re-imagined into an island-luxury retreat; discover a designer chef's kitchen with cherry cabinetry, high-end appliances, and a walk-in pantry, dedicated formal dining area, open main living area with sweeping panoramic vistas, upgraded lighting throughout, separate walk-in laundry room, a spacious lanai area with breathtaking views of paradise, and much more. The primary bedroom suite enjoys stunning ocean views, with the second bedroom and den area situated facing Diamond Head. This incredible location puts you just blocks from sandy beaches, Ala Moana Center, Ward Village, SALT, dining, shopping, entertainment, water sports and more. Capture this stunning Penthouse and enjoy Hawaii's sought-after "Work, Play, Live" lifestyle in the heart of Honolulu. Photos #17, #18, and #20 are zoomed-in. **Region:** Metro **Neighborhood:** Kakaako **Condition:** Excellent **Parking:** Covered - 3+, Secured Entry **Total Parking:** 3 **View:** Ocean, Sunset **Frontage:** **Pool:** **Zoning:** Kak - Kakaako Community Development Project **Sale Conditions:** None **Schools:** [Royal](#), [Keelikolani](#), [Mckinley](#) \* [Request Showing](#), [Photos](#), [History](#), [Maps](#), [Deed](#), [Watch List](#), [Tax Info](#)

DOM = Days on Market, Occ. = Occupancy, FL = Floor Number