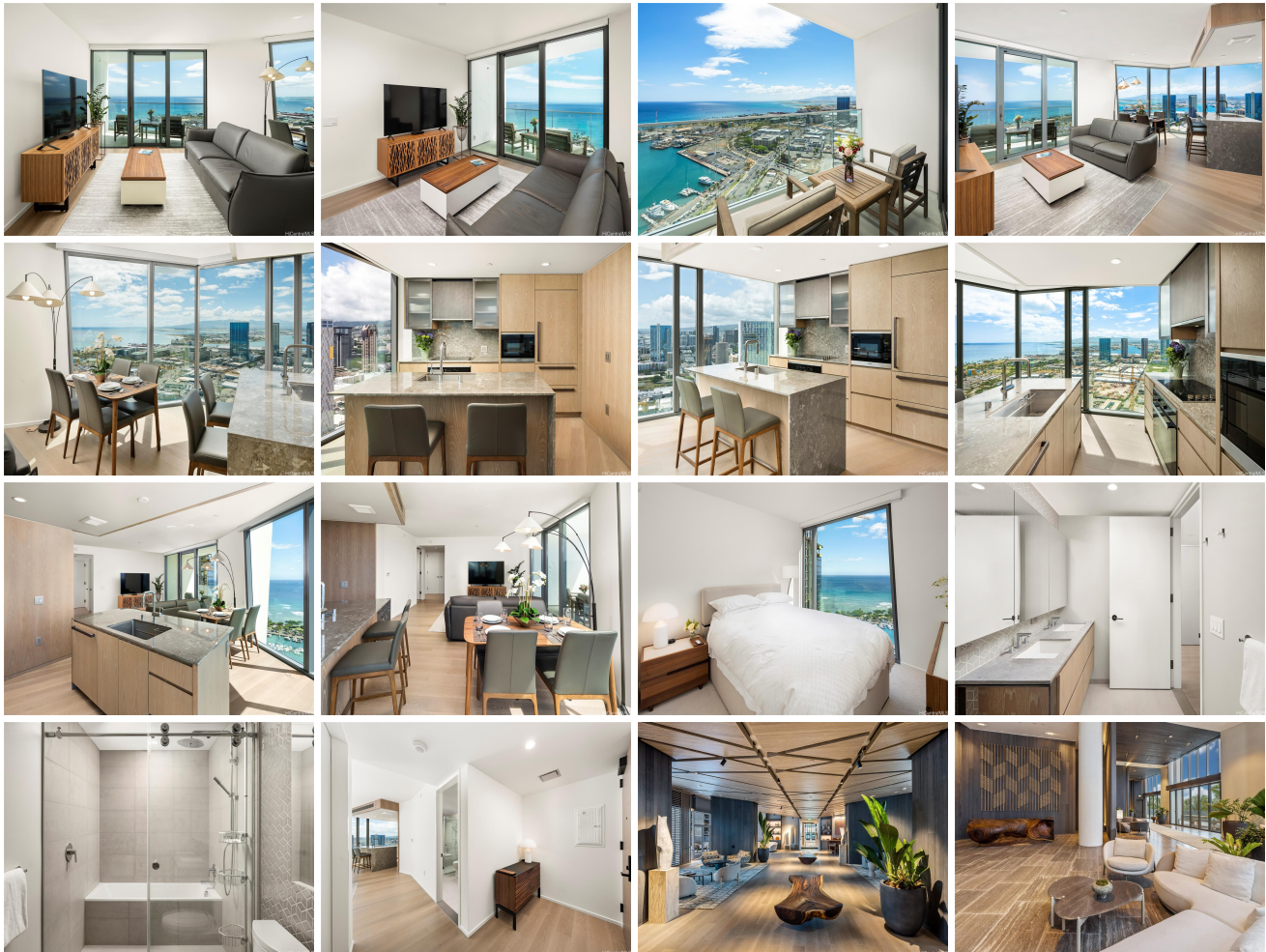


Koula 1000 Auahi Street Unit 3701, Honolulu 96814 * Koula * \$1,490,000 * Originally \$1,590,000

Beds: 1	MLS#: <u>202314079</u>, FS	Year Built: 2021
Bath: 1/0	Status: Active	Remodeled:
Living Sq. Ft.: 739	List Date & DOM: 06-18-2023 & 332	Total Parking: 1
Land Sq. Ft.: 0	Condition: Excellent, Above Average	Assessed Value
Lanai Sq. Ft.: 76	Frontage: Other	Building: \$1,050,100
Sq. Ft. Other: 0	Tax/Year: \$414/2022	Land: \$34,600
Total Sq. Ft. 815	Neighborhood: Kakaako	Total: \$1,084,700
Maint./Assoc. \$923 / \$0	Flood Zone : Zone AE - Tool	Stories / CPR: 21+ / No
Parking: Assigned, Covered - 1, Garage, Guest, Secured Entry	Frontage: Other	
Zoning : Kak - Kakaako Community Development Project	View: City, Coastline, Mountain, Ocean, Sunrise, Sunset	

Public Remarks: Introducing a brand new luxury building, a Sancturay by the Sea. This exquisite high floor corner end unit offers unparalleled views harbor and sunsets. Includes one covered parking space with option to add an EV Charging station. Archtected by renowned Jeanne Chang, building comprises of 565 unis embodying elegance and sophistication. Featuring central AC, floor to ceiling windows illuminating the space and engineered wood flooring. The open kitchen is equipped with Miele Kitchen appliances complemented by an impressive 8.8 foot ceiling height. This pet friendly residence allows for 2 pets under 60 pounds. Additional perks include guest suites available for \$250 a night. The resort style amenities on the 8th floor include pool, BBQ area, excerise room, sauna, whirlpool, grand lanai, dog park, dog bath, putting for golf, playground, rec room, security guard, manager, fire sprinklers and concierge. Six elevators plus 2 service, building has surboard and Bike storage. Located within walking distance to Whole foods, coffee shops, salon, Ala Moana beach park, and culinary delights. Exceptional higher end furniture, pots, pans, linens. Just Move right in. **Sale Conditions:** None **Schools:** [Kaahumanu](#), [Stevenson](#), [Mckinley](#) * [Request Showing](#), [Photos](#), [History](#), [Maps](#), [Deed](#), [Watch List](#), [Tax Info](#)





Address	Price	Bd & Bth	Living / Avg.	Land Avg.	Lanai	Occ.	FL	DOM
1000 Auahi Street 3701	\$1,490,000	1 & 1/0	739 \$2,016	0 \$inf	76	0%	37	332

Address	Tax Maint. Ass.	Assessed Land	Assessed Building	Assessed Total	Ratio	Year & Remodeled
1000 Auahi Street 3701	\$414 \$923 \$0	\$34,600	\$1,050,100	\$1,084,700	137%	2021 & NA

[1000 Auahi Street 3701](#) - MLS#: [202314079](#) - Original price was \$1,590,000 - Introducing a brand new luxury building, a Sancturay by the Sea. This exquisite high floor corner end unit offers unparalleled views harbor and sunsets. Includes one covered parking space with option to add an EV Charging station. Archtected by renowned Jeanne Chang, building comprises of 565 unis embodying elegance and sophistication. Featuring central AC, floor to ceiling windows illuminating the space and engineered wood flooring. The open kitchen is equipped with Miele Kitchen appliances complemented by an impressive 8.8 foot ceiling height. This pet friendly residence allows for 2 pets under 60 pounds. Additional perks include guest suites available for \$250 a night. The resort style amentities on the 8th floor include pool, BBQ area, excercise room, sauna, whirlpool, grand lanai, dog park, dog bath, putting for golf, playground, rec room, security guard, manager, fire sprinklers and concierge. Six elevators plus 2 service, building has surboard and Bike storage. Located within walking distance to Whole foods, coffee shops, salon, Ala Moana beach park, and culinary delights. Exceptional higher end furniture, pots, pans, linens. Just Move right in. **Region:** Metro **Neighborhood:** Kakaako **Condition:** Excellent, Above Average **Parking:** Assigned, Covered - 1, Garage, Guest, Secured Entry **Total Parking:** 1 **View:** City, Coastline, Mountain, Ocean, Sunrise, Sunset **Frontage:** Other **Pool:** Zoning: Kak - Kakaako Community Development Project **Sale Conditions:** None **Schools:** [Kaahumanu](#), [Stevenson](#), [Mckinley](#) * [Request Showing](#), [Photos](#), [History](#), [Maps](#), [Deed](#), [Watch List](#), [Tax Info](#)

DOM = Days on Market, Occ. = Occupancy, FL = Floor Number